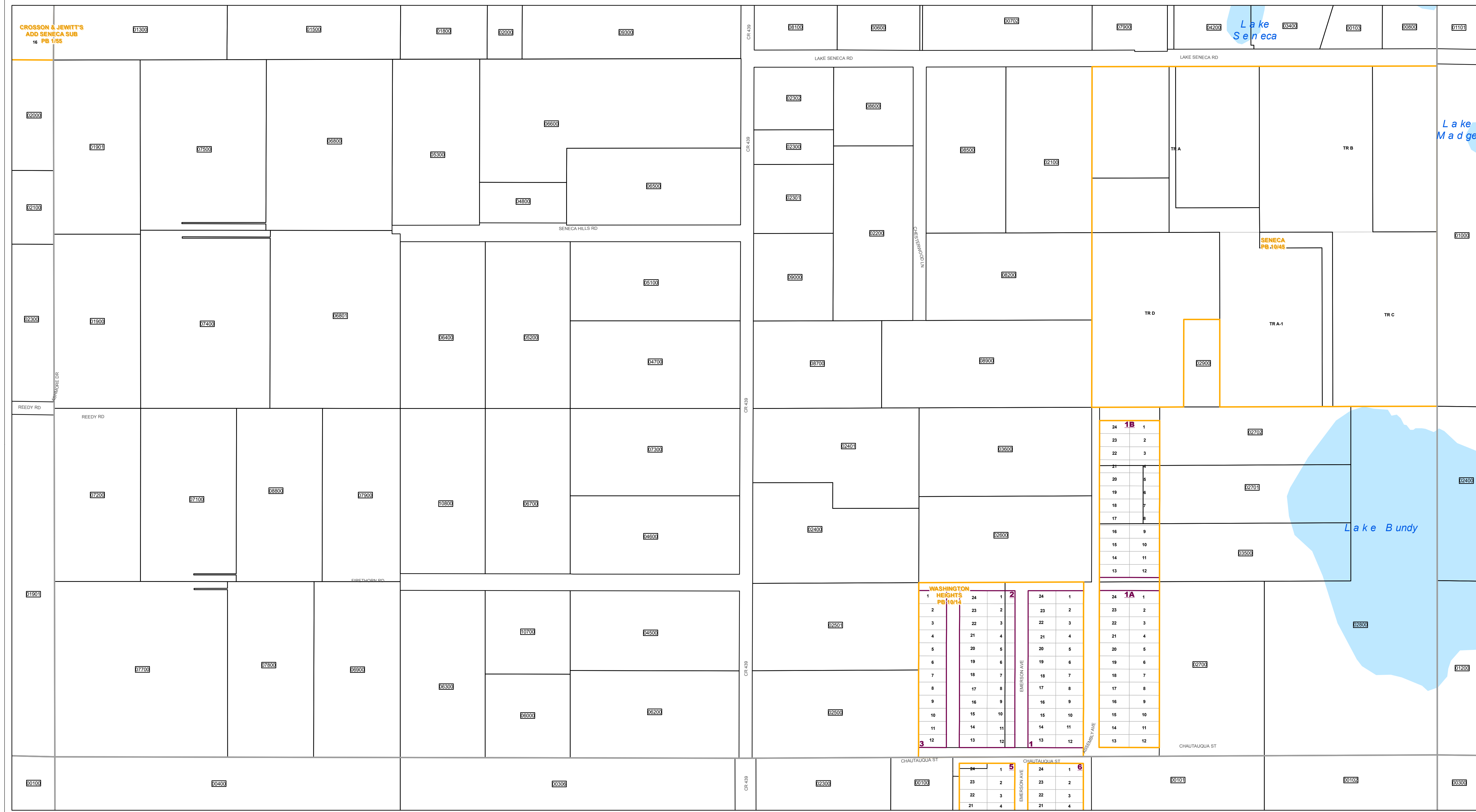




www.lakecopappr.com
 CAREY BAKER
 LAKE COUNTY PROPERTY APPRAISER
 320 W. MAIN STREET
 TAVARES, FLORIDA 32778



24	1B	1
23		2
22		3
21		4
20		5
19		6
18		7
17		8
16		9
15		10
14		11
13		12

WASHINGTON HEIGHTS PB 10/14			EMERSON AVE		
24	1	2	24	1	2
23	2	3	23	2	3
22	3	4	22	3	4
21	4	5	21	4	5
20	5	6	20	5	6
19	6	7	19	6	7
18	7	8	18	7	8
17	8	9	17	8	9
16	9	10	16	9	10
15	10	11	15	10	11
14	11	12	14	11	12
13	12	1	13	12	1

24	1A	1
23		2
22		3
21		4
20		5
19		6
18		7
17		8
16		9
15		10
14		11
13		12

24	5	1	24	1	6
23		2	23	2	
22		3	22	3	
21		4	21	4	

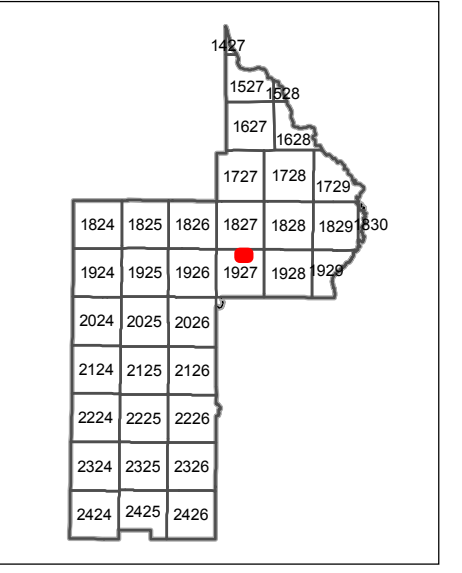
Legend:

- Tax Parcels
- Subdivision Lots
- Subdivision Blocks
- Subdivision Boundaries
- Easements
- Right of Way
- City Limits
- Lakes
- Government Lots
- Section Lines
- County Boundary

Lake County Property Appraiser (LCPA) digital Geographic Information System (GIS) cadastral maps are produced solely for ad valorem property assessment purposes and are provided to the public for informational purposes only. LCPA's GIS cadastral maps are NOT legal land surveys and should not be used or relied upon as such. No warranties, expressed or implied, are provided for the map data herein, its positional or thematic accuracy, its use, or its interpretation.

ASSESSMENT MAP
LAKE COUNTY, FLORIDA

Coordinate System: NAD 1983 HARN StatePlane Florida East FIPS 0901 Feet



T19-R27-Sec03 S1/2
 Date: 1/21/2020

Path: \\lakegov\bcclcgis\Workgroups\PropertyAppraiser\TaxMaps\2019\TaxMap_HalfSection_Updated.mxd