



www.lakepropappr.com  
CAREY BAKER  
LAKE COUNTY PROPERTY APPRAISER  
320 W. MAIN STREET  
TAVARES, FLORIDA 32778

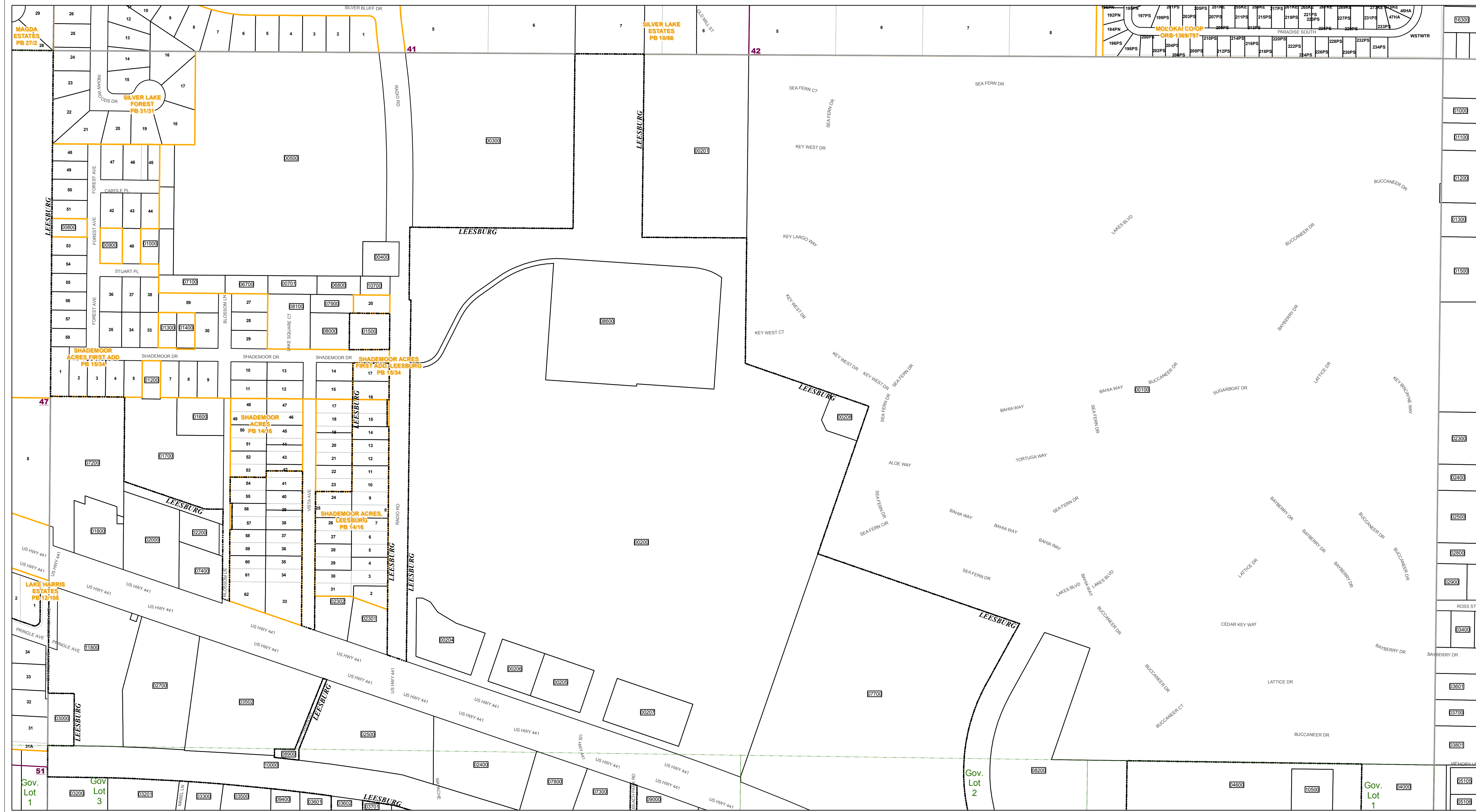
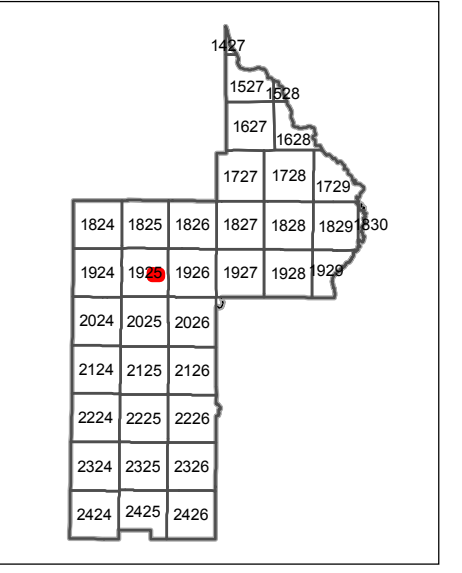
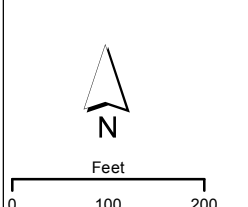


Table of parcel IDs and values along the right edge of the map, including values like 16300, 11000, 11100, 11200, 11300, 11500, 11500, 12300, 12400, 12500, 12600, 12900, 13400, 13601, 13700, 13801, 15100, 15100.



Legend for map symbols: Tax Parcels, Subdivision Lots, Subdivision Blocks, Subdivision Boundaries, Easements, Right of Way, City Limits, Lakes, Government Lots, Section Lines, County Boundary.

Lake County Property Appraiser (LCPA) digital Geographic Information System (GIS) cadastral maps are produced solely for ad valorem property assessment purposes and are provided to the public for informational purposes only. LCPA's GIS cadastral maps are NOT legal land surveys and should not be used or relied upon as such. No warranties, expressed or implied, are provided for the map data herein, its positional or thematic accuracy, its use, or its interpretation.



ASSESSMENT MAP  
LAKE COUNTY, FLORIDA  
Coordinate System: NAD 1983 HARN StatePlane Florida East FIPS 0901 Feet

T19-R25-Sec23 N1/2  
Date: 1/21/2020

Path: \\lakegov\bccl\gis\Workgroups\PropertyAppraiser\TaxMaps\2019\TaxMap\_HalfSection\_Updated.mxd