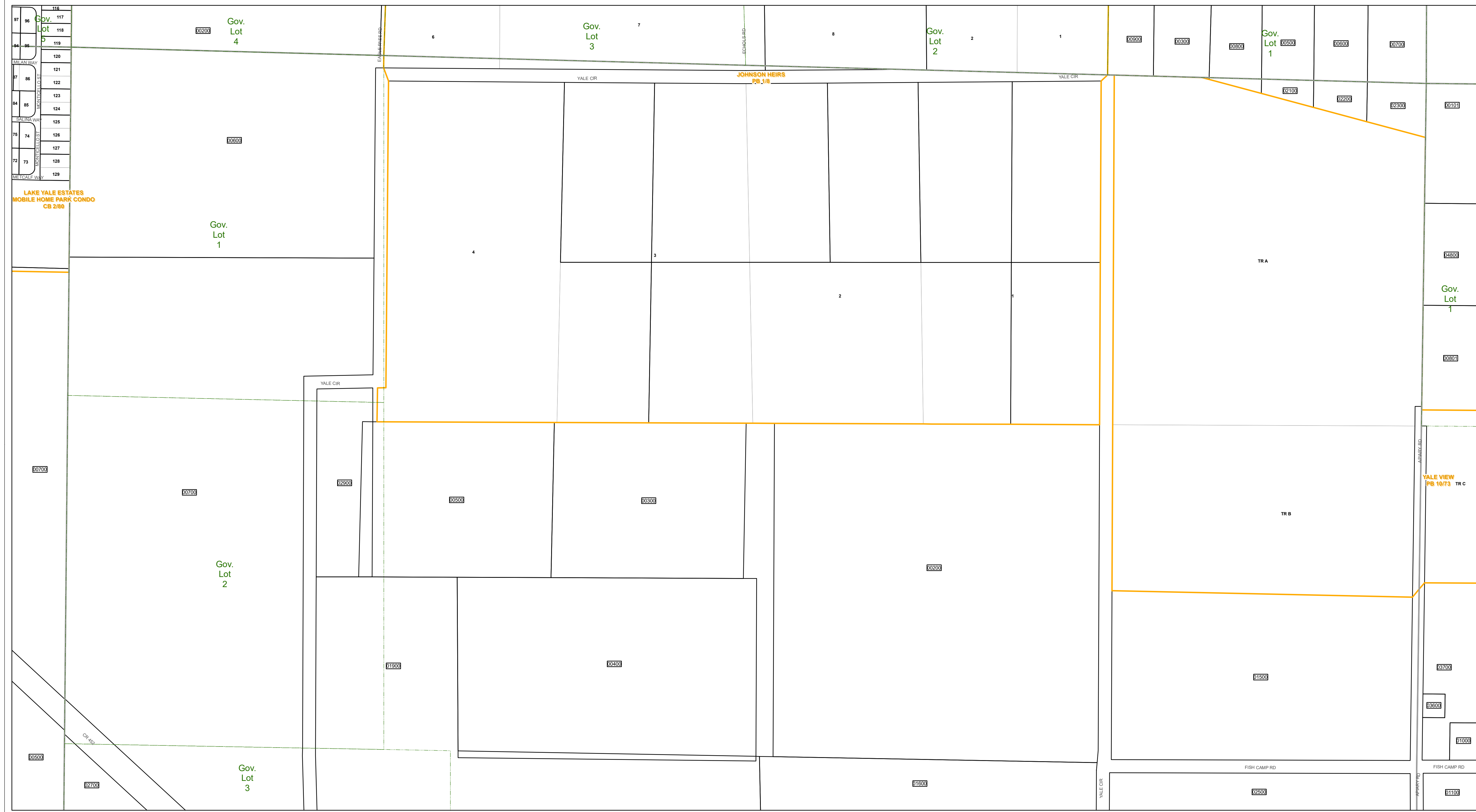




www.lakecopropappr.com
CAREY BAKER
LAKE COUNTY PROPERTY APPRAISER
320 W. MAIN STREET
TAVARES, FLORIDA 32778



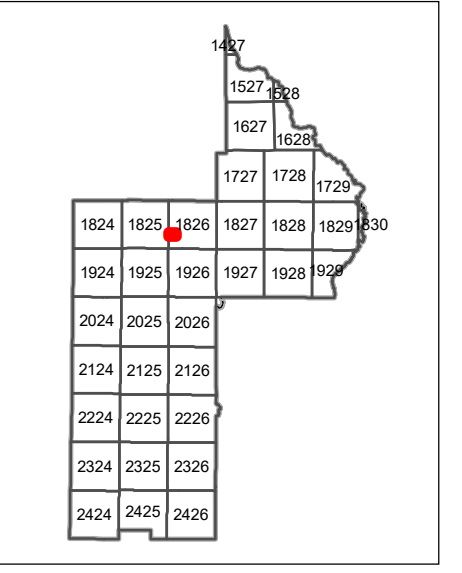
LAKE YALE ESTATES
MOBILE HOME PARK CONDO
CB 2/80

97	96	116
96	95	117
95	94	118
94	93	119
93	92	120
92	91	121
91	90	122
90	89	123
89	88	124
88	87	125
87	86	126
86	85	127
85	84	128
84	83	129
83	82	
82	81	
81	80	
80	79	
79	78	
78	77	
77	76	
76	75	
75	74	
74	73	
73	72	
72	71	
71	70	
70	69	
69	68	
68	67	
67	66	
66	65	
65	64	
64	63	
63	62	
62	61	
61	60	
60	59	
59	58	
58	57	
57	56	
56	55	
55	54	
54	53	
53	52	
52	51	
51	50	
50	49	
49	48	
48	47	
47	46	
46	45	
45	44	
44	43	
43	42	
42	41	
41	40	
40	39	
39	38	
38	37	
37	36	
36	35	
35	34	
34	33	
33	32	
32	31	
31	30	
30	29	
29	28	
28	27	
27	26	
26	25	
25	24	
24	23	
23	22	
22	21	
21	20	
20	19	
19	18	
18	17	
17	16	
16	15	
15	14	
14	13	
13	12	
12	11	
11	10	
10	9	
9	8	
8	7	
7	6	
6	5	
5	4	
4	3	
3	2	
2	1	

Lake County Property Appraiser (LCPA) digital Geographic Information System (GIS) cadastral maps are produced solely for ad valorem property assessment purposes and are provided to the public for informational purposes only. LCPA's GIS cadastral maps are NOT legal land surveys and should not be used or relied upon as such. No warranties, expressed or implied, are provided for the map data herein, its positional or thematic accuracy, its use, or its interpretation.



ASSESSMENT MAP
LAKE COUNTY, FLORIDA
Coordinate System: NAD 1983 HARN StatePlane Florida East FIPS 0901 Feet



T18-R26-Sec30 N1/2
Date: 1/21/2020