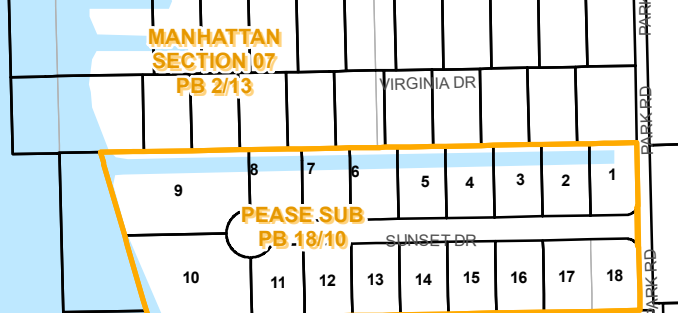
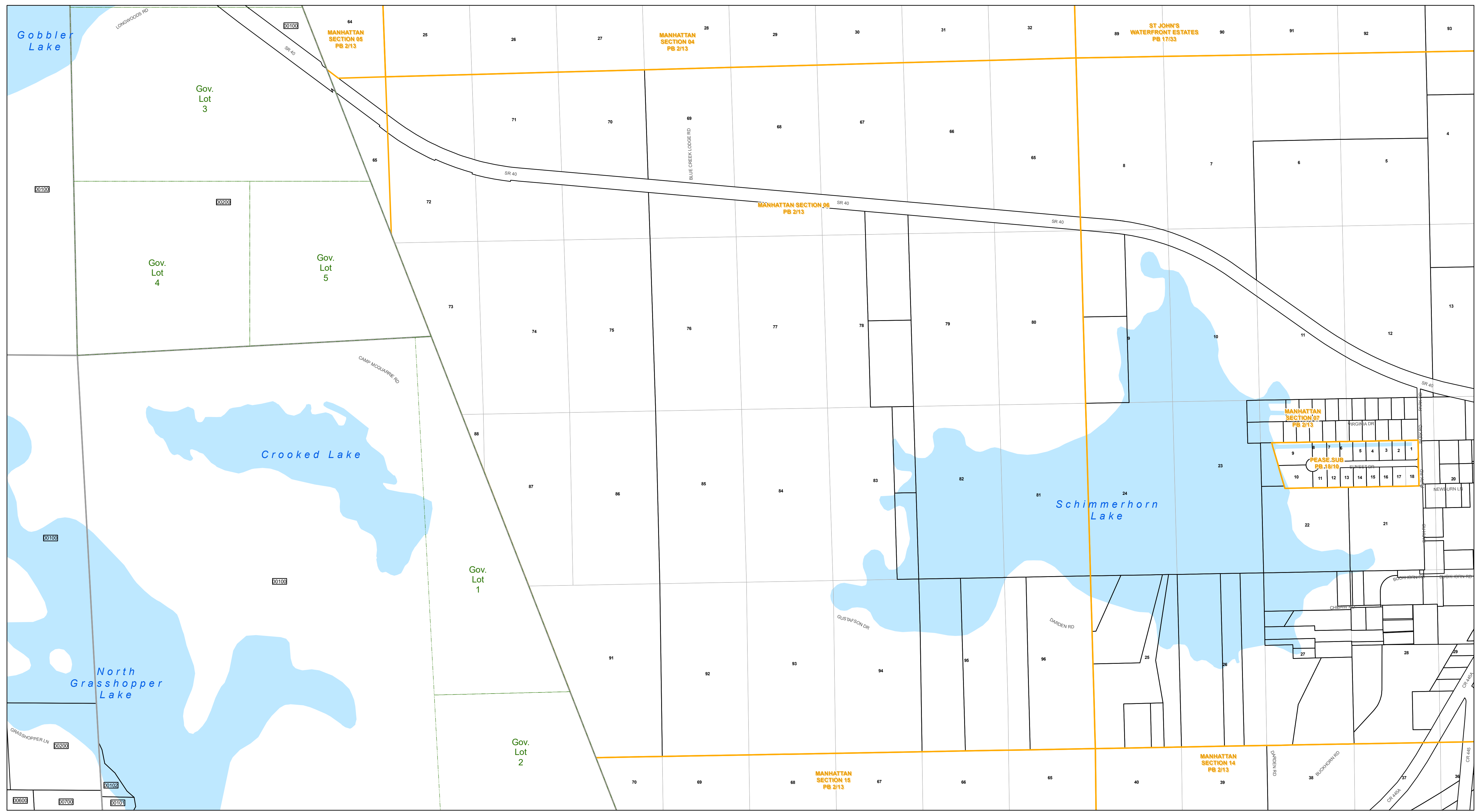




www.lakecopropappr.com
 CAREY BAKER
 LAKE COUNTY PROPERTY APPRAISER
 320 W. MAIN STREET
 TAVARES, FLORIDA 32778

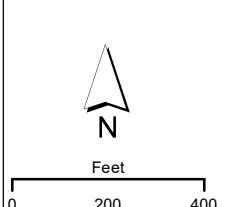


1824	1825	1826	1827	1828	1829	1830
1831	1832	1833	1834	1835	1836	1837
1838	1839	1840	1841	1842	1843	1844
1845	1846	1847	1848	1849	1850	1851
1852	1853	1854	1855	1856	1857	1858
1859	1860	1861	1862	1863	1864	1865
1866	1867	1868	1869	1870	1871	1872
1873	1874	1875	1876	1877	1878	1879
1880	1881	1882	1883	1884	1885	1886
1887	1888	1889	1890	1891	1892	1893
1894	1895	1896	1897	1898	1899	1900

Legend:

- Tax Parcels
- Subdivision Lots
- Subdivision Blocks
- Subdivision Boundaries
- Easements
- Right of Way
- City Limits
- Lakes
- Government Lots
- Section Lines
- County Boundary

Lake County Property Appraiser (LCPA) digital Geographic Information System (GIS) cadastral maps are produced solely for ad valorem property assessment purposes and are provided to the public for informational purposes only. LCPA's GIS cadastral maps are NOT legal land surveys and should not be used or relied upon as such. No warranties, expressed or implied, are provided for the map data herein, its positional or thematic accuracy, its use, or its interpretation.



ASSESSMENT MAP
LAKE COUNTY, FLORIDA
 Coordinate System: NAD 1983 HARN StatePlane Florida East FIPS 0901 Feet

T15-R27-Sec06M
 Date: 1/21/2020

Path: \\lakegov\bcclcgis\Workgroups\PropertyAppraiser\TaxMaps\2019\TaxMap_HalfSection_Updated.mxd