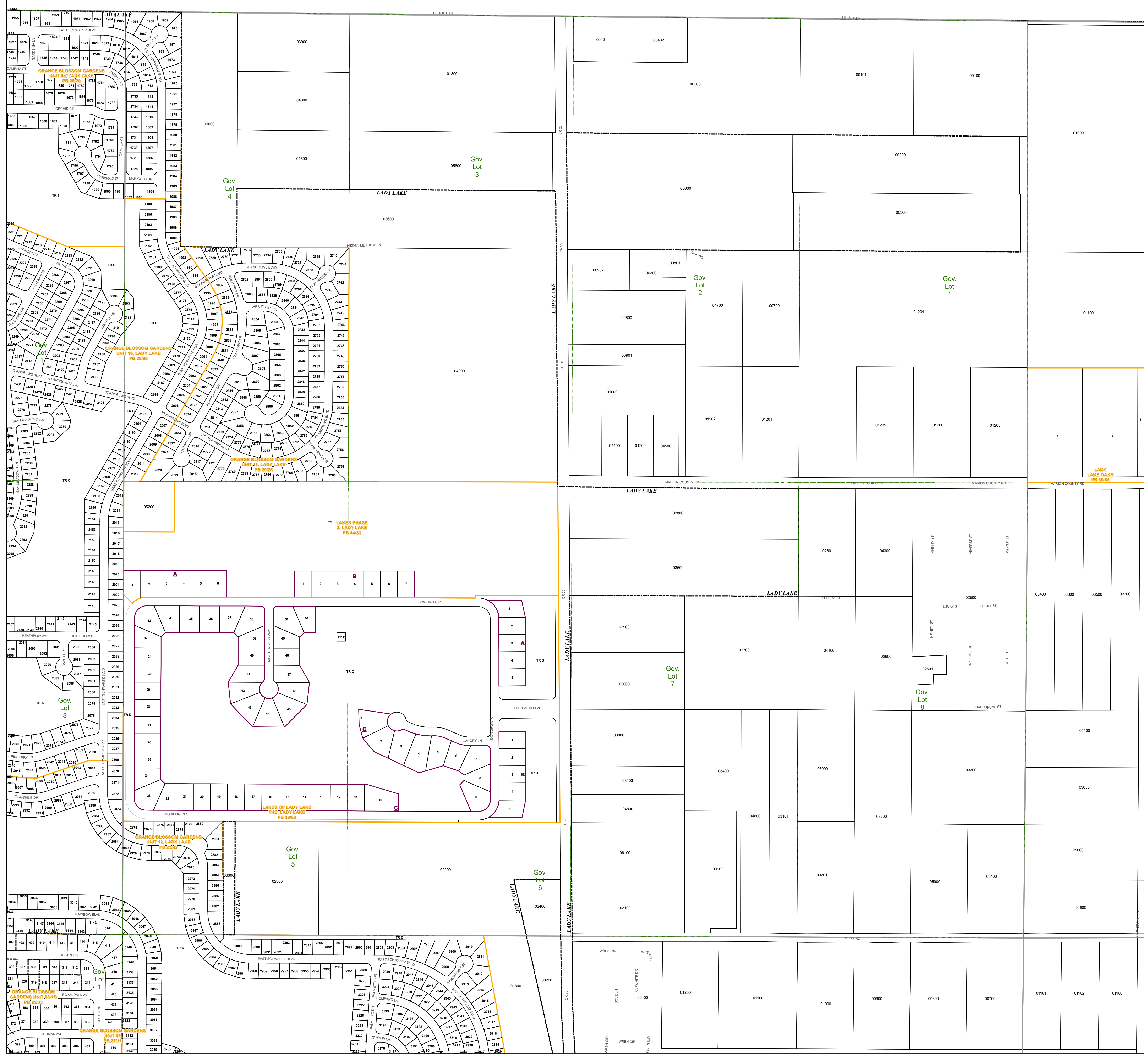
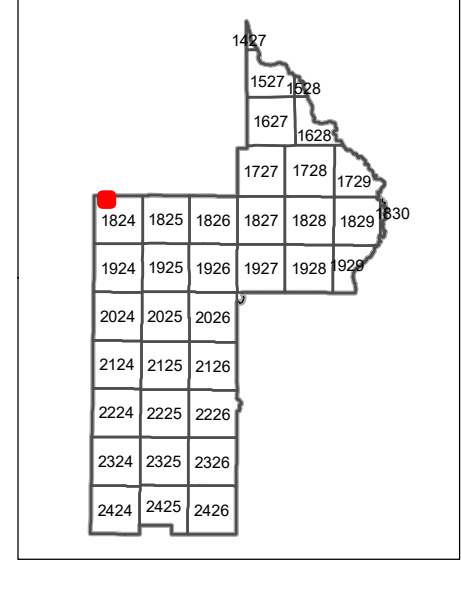


Marion County

Marion County



Path: \\lakegov\bc\GIS\Workgroups\PropertyAppraiser\Tax\Maps\2021\TaxMap_WholeSection_Updated.mxd



ASSESSMENT MAP
LAKE COUNTY, FLORIDA

T18-R24-Sec05
Date: 10/23/2020

Coordinate System: NAD 1983 HARN StatePlane Florida East FIPS 0901 Feet

- Tax Parcels
- Subdivision Lots
- Subdivision Boundaries
- Conservation Easements
- Government Lots
- Section Lines
- County Boundary
- Right of Way
- City Limits
- Lakes

Lake County Property Appraiser (LCPA) digital Geographic Information System (GIS) cadastral maps are produced solely for ad valorem property assessment purposes and are provided to the public for informational purposes only. LCPA's GIS cadastral maps are NOT legal land surveys and should not be used or relied upon as such. No warranties, expressed or implied, are provided for the map data herein, its positional or thematic accuracy, its use, or its interpretation.

TAX YEAR 2021



www.lakecountypr.com
CAREY BAKER
LAKE COUNTY PROPERTY APPRAISER
330 W. MAIN STREET
TAVARES, FLORIDA 32778