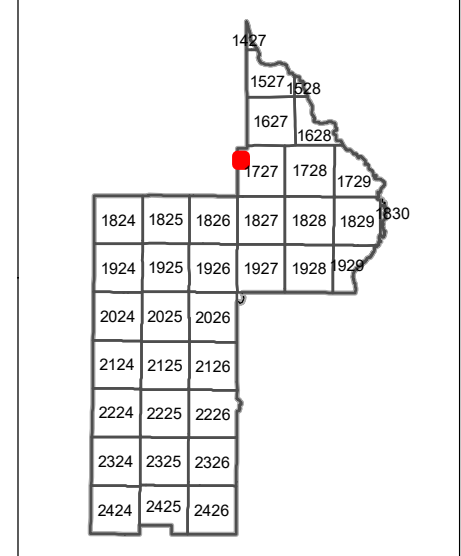
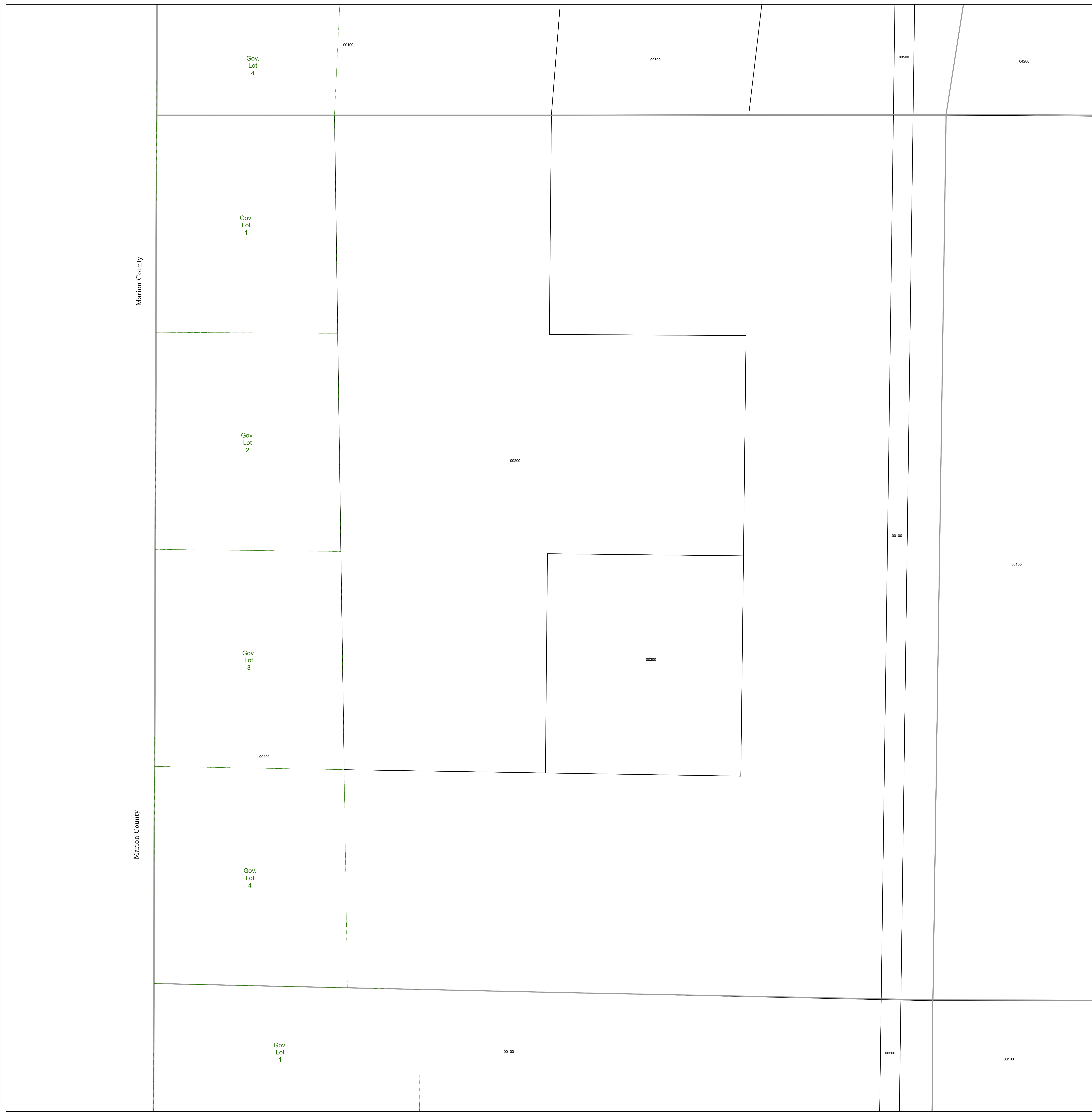


Path: \\lakegov\bc\GIS\Workgroups\PropertyAppraisal\Tax\Maps\2021\TaxMap\_WholeSection\_Updated.mxd



ASSESSMENT MAP  
**LAKE COUNTY, FLORIDA**

**T17-R27-Sec07**  
Date: 10/23/2020

- |                        |                        |                 |
|------------------------|------------------------|-----------------|
| Tax Parcels            | Conservation Easements | Government Lots |
| Subdivision Lots       | Right of Way           | Section Lines   |
| Subdivision Blocks     | City Limits            | County Boundary |
| Subdivision Boundaries | Lakes                  |                 |

Lake County Property Appraiser (LCPA) digital Geographic Information System (GIS) cadastral maps are produced solely for ad valorem property assessment purposes and are provided to the public for informational purposes only. LCPA's GIS cadastral maps are NOT legal land surveys and should not be used or relied upon as such. No warranties, expressed or implied, are provided for the map data herein, its positional or thematic accuracy, its use, or its interpretation.

**TAX YEAR 2021**



www.lakecoappraiser.com  
CAREY BAKER  
LAKE COUNTY PROPERTY APPRAISER  
330 W. MAIN STREET  
TAVARES, FLORIDA 32778