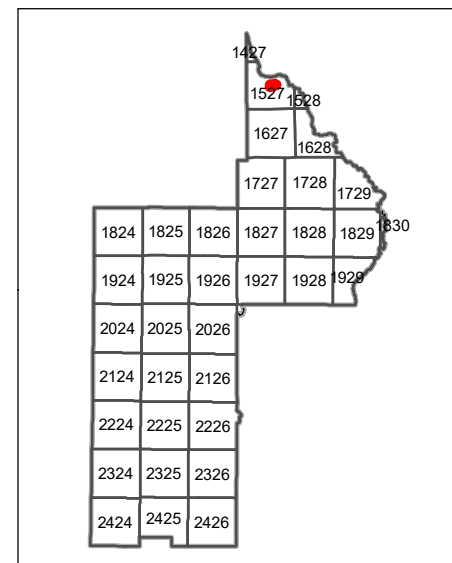
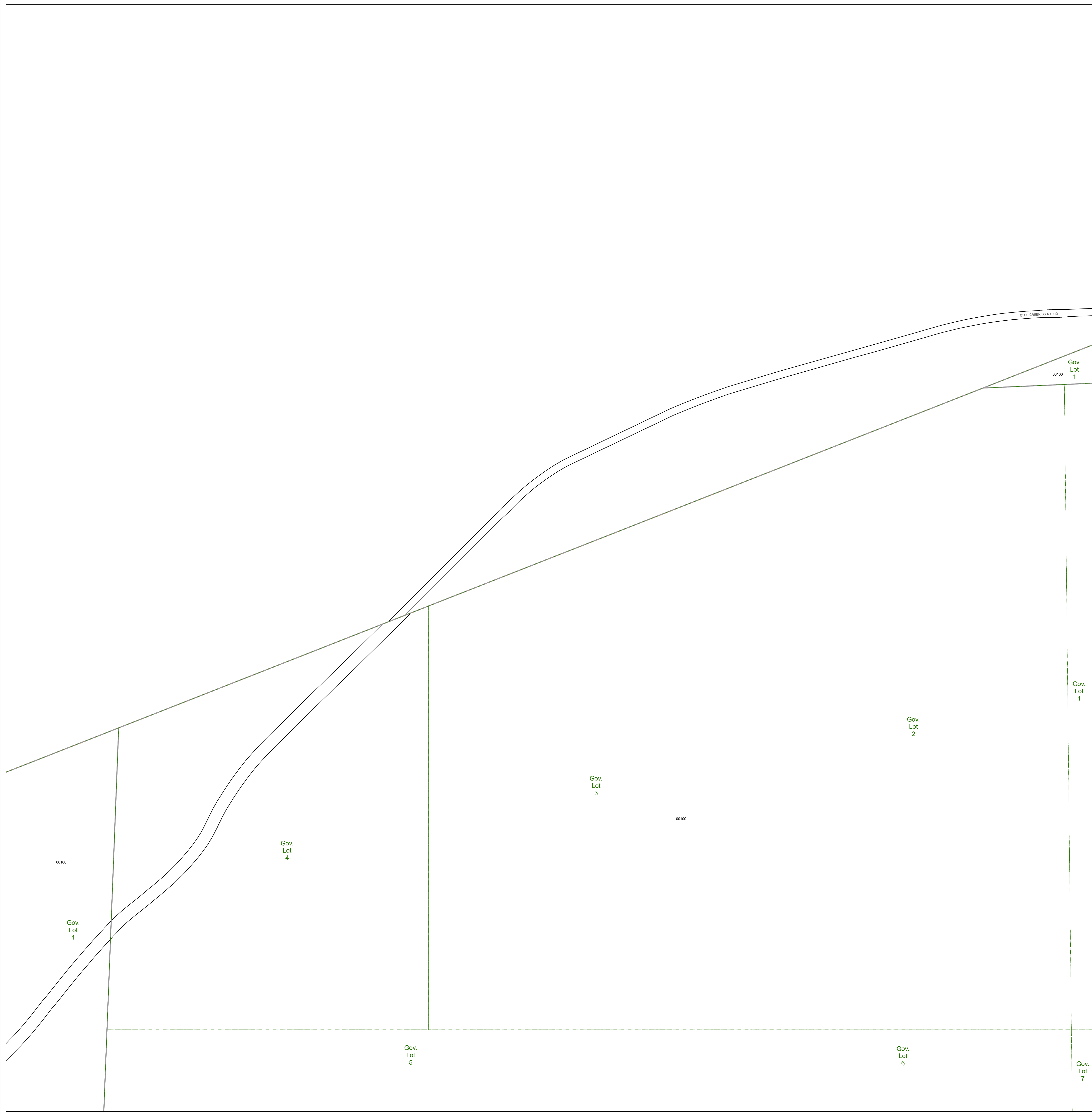


Path: \\lakegov\bc\olcgis\Workgroups\PropertyAppraiser\TaxMaps\2021\TaxMap_WholeSection_Updated.mxd



ASSESSMENT MAP
LAKE COUNTY, FLORIDA

T15-R27-Sec39m
Date: 10/23/2020

Coordinate System: NAD 1983 HARN StatePlane Florida East FIPS 0901 Feet

- | | | |
|------------------------|------------------------|-----------------|
| Tax Parcels | Conservation Easements | Government Lots |
| Subdivision Lots | Right of Way | Section Lines |
| Subdivision Blocks | City Limits | County Boundary |
| Subdivision Boundaries | Lakes | |

Lake County Property Appraiser (LCPA) digital Geographic Information System (GIS) cadastral maps are produced solely for ad valorem property assessment purposes and are provided to the public for informational purposes only. LCPA's GIS cadastral maps are NOT legal land surveys and should not be used or relied upon as such. No warranties, expressed or implied, are provided for the map data herein, its positional or thematic accuracy, its use, or its interpretation.

TAX YEAR 2021



www.lakecproppr.com
CAREY BAKER
LAKE COUNTY PROPERTY APPRAISER
320 W. MAIN STREET
TAVARES, FLORIDA 32778