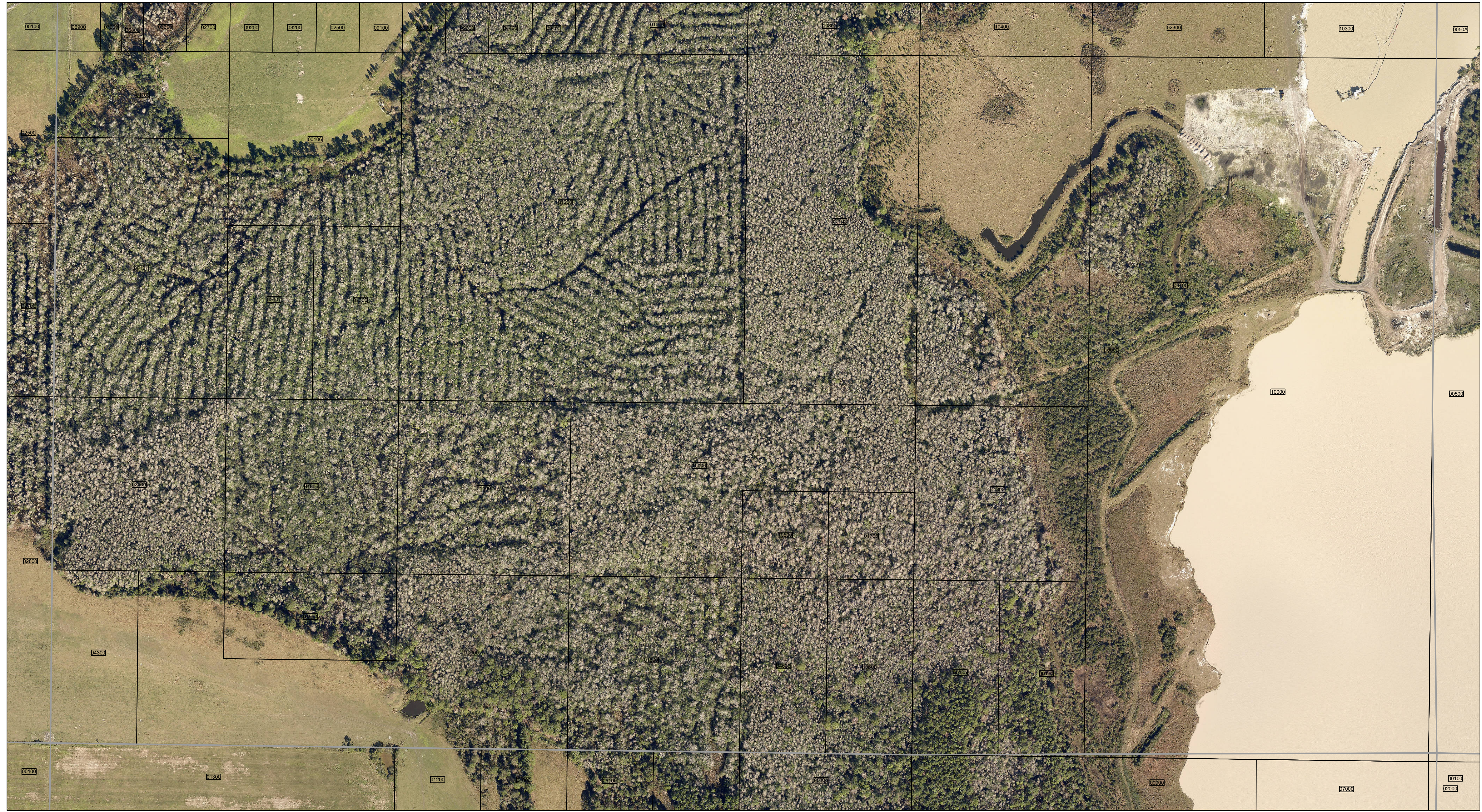




www.lakecopropappr.com
 CAREY BAKER
 LAKE COUNTY PROPERTY APPRAISER
 320 W. MAIN STREET
 TAVARES, FLORIDA 32778



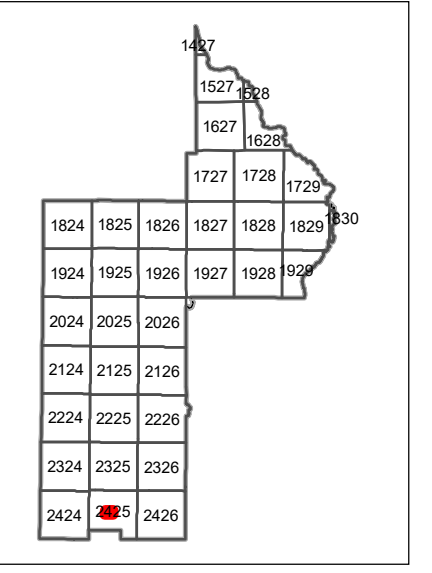
Path: Z:\Workgroups\PASS\TaxMap\PDFCreation\TaxMaps\TaxMap_HalfSection\Aerial_Updated.mxd

Tax Parcels	Easements	Government Lots
Subdivision Lots	Right of Way	Section Lines
Subdivision Blocks	City Limits	County Boundary
Subdivision Boundaries	Lakes	

Lake County Property Appraiser (LCPA) digital Geographic Information System (GIS) cadastral maps are produced solely for ad valorem property assessment purposes and are provided to the public for informational purposes only. LCPA's GIS cadastral maps are NOT legal land surveys and should not be used or relied upon as such. No warranties, expressed or implied, are provided for the map data herein, its positional or thematic accuracy, its use, or its interpretation.



ASSESSMENT MAP
LAKE COUNTY, FLORIDA
 Aerial Imagery: 2020
 Coordinate System: NAD 1983 HARN StatePlane Florida East FIPS 0901 Feet



T24-R25-Sec16 S1/2
 Date: 10/23/2020