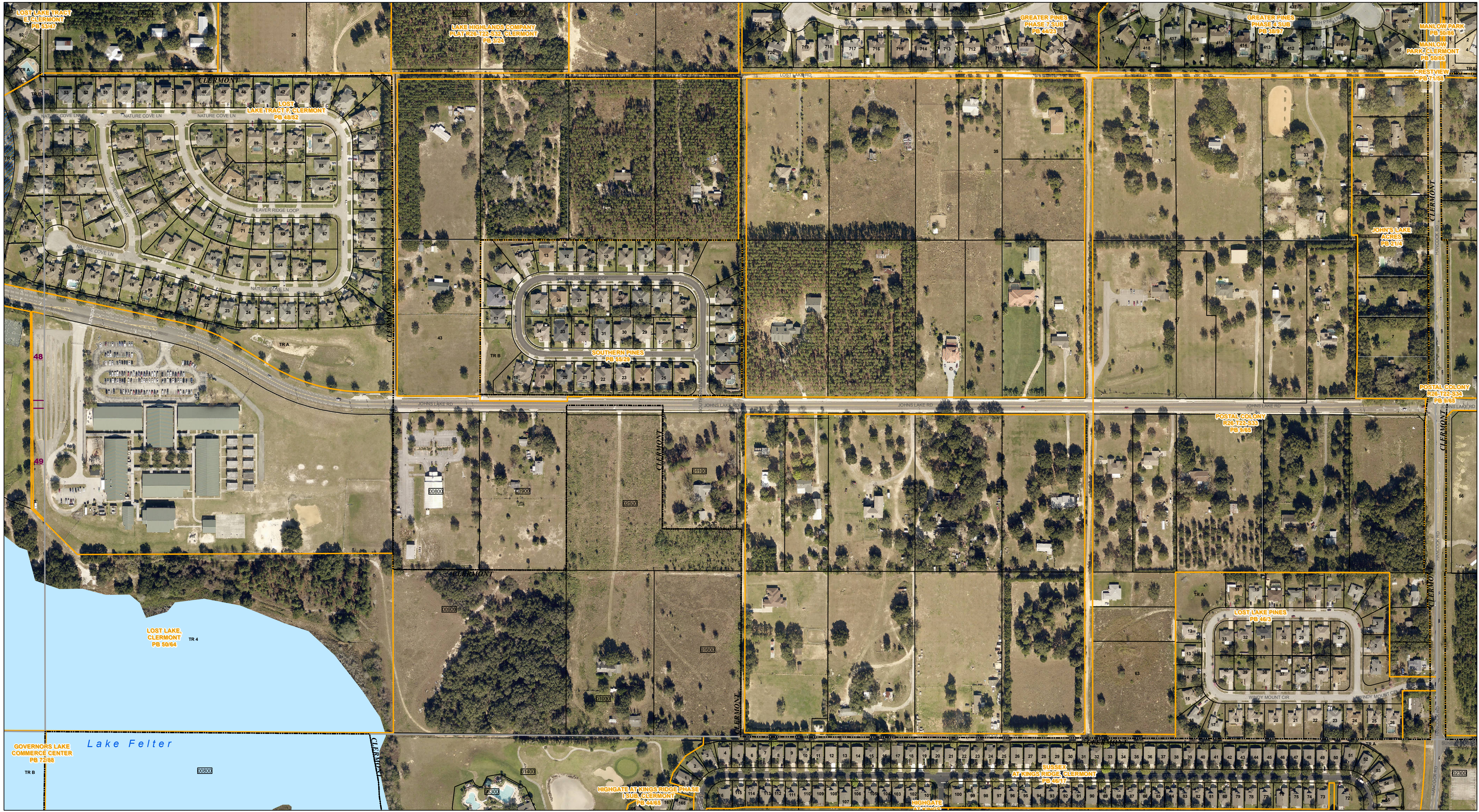




www.lakecoprappr.com
 CAREY BAKER
 LAKE COUNTY PROPERTY APPRAISER
 320 W. MAIN STREET
 TAVARES, FLORIDA 32778



Path: Z:\Workgroups\PASS\TaxMap\PDFCreation\TaxMaps\TaxMap_HalfSectionAerial_Updated.mxd

Lake County Property Appraiser (LCPA) digital Geographic Information System (GIS) cadastral maps are produced solely for ad valorem property assessment purposes and are provided to the public for informational purposes only. LCPA's GIS cadastral maps are NOT legal land surveys and should not be used or relied upon as such. No warranties, expressed or implied, are provided for the map data herein, its positional or thematic accuracy, its use, or its interpretation.

ASSESSMENT MAP
LAKE COUNTY, FLORIDA
 Aerial Imagery: 2020

Coordinate System: NAD 1983 HARN StatePlane Florida East FIPS 0901 Feet

1824	1825	1826	1827	1828	1829
1924	1925	1926	1927	1928	1929
2024	2025	2026			
2124	2125	2126			
2224	2225	2226			
2324	2325	2326			
2424	2425	2426			

T22-R26-Sec33 S1/2

Date: 10/23/2020