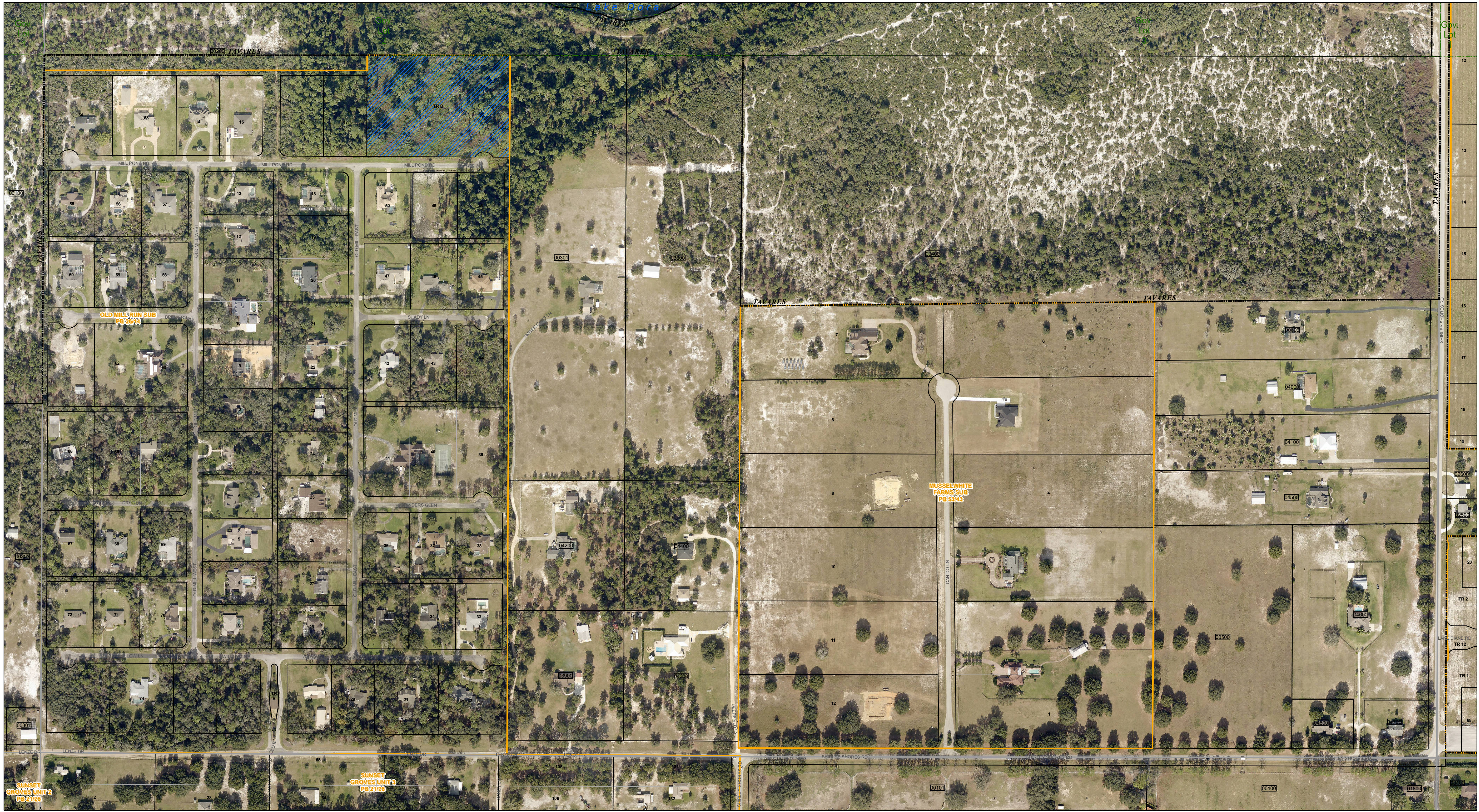




www.lakecoprappr.com
 CAREY BAKER
 LAKE COUNTY PROPERTY APPRAISER
 320 W. MAIN STREET
 TAVARES, FLORIDA 32778



1427	1527	1626	1725	1824	1825	1826	1827	1828	1829	1930
1924	1924	1925	1926	1927	1928	1928	1928	1928	1928	1929
2024	2025	2025	2026	2026	2026	2026	2026	2026	2026	2026
2124	2125	2126	2126	2126	2126	2126	2126	2126	2126	2126
2224	2225	2226	2226	2226	2226	2226	2226	2226	2226	2226
2324	2325	2326	2326	2326	2326	2326	2326	2326	2326	2326
2424	2425	2426	2426	2426	2426	2426	2426	2426	2426	2426

- Tax Parcels
- Easements
- Government Lots
- Subdivision Lots
- Right of Way
- Section Lines
- Subdivision Blocks
- City Limits
- County Boundary
- Subdivision Boundaries
- Lakes

Lake County Property Appraiser (LCPA) digital Geographic Information System (GIS) cadastral maps are produced solely for ad valorem property assessment purposes and are provided to the public for informational purposes only. LCPA's GIS cadastral maps are NOT legal land surveys and should not be used or relied upon as such. No warranties, expressed or implied, are provided for the map data herein, its positional or thematic accuracy, its use, or its interpretation.



ASSESSMENT MAP
LAKE COUNTY, FLORIDA
 Aerial Imagery: 2020
 Coordinate System: NAD 1983 HARN StatePlane Florida East FIPS 0901 Feet

T20-R26-Sec03 S1/2
 Date: 10/23/2020