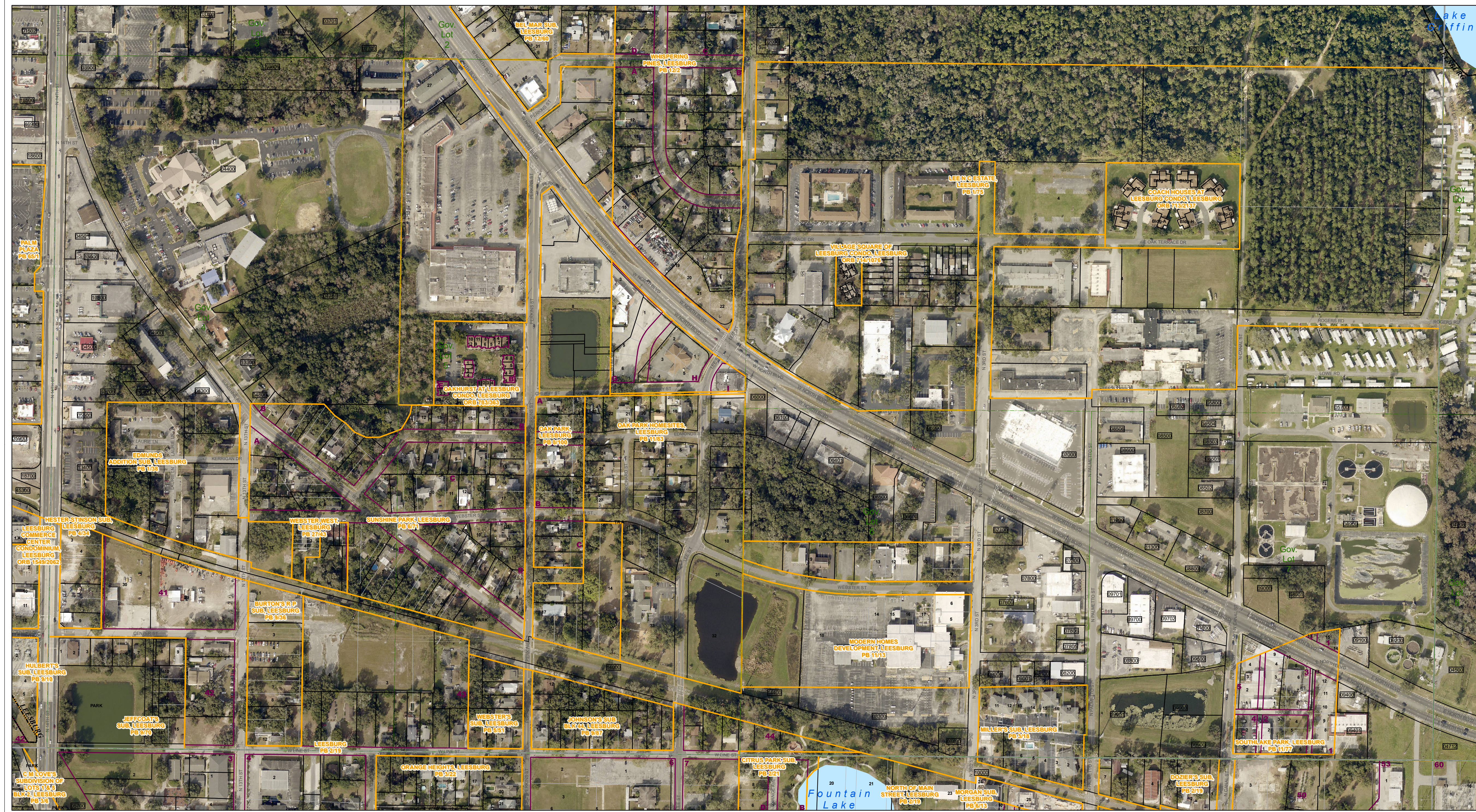




www.lakepropappr.com  
CAREY BAKER  
LAKE COUNTY PROPERTY APPRAISER  
320 W. MAIN STREET  
TAVARES, FLORIDA 32778



Path: Z:\Workgroups\PASS\TaxMap\PDFCreation\TaxMaps\TaxMap\_HalfSectionAerial\_Updated.mxd

- Tax Parcels
- Subdivision Lots
- Subdivision Blocks
- Subdivision Boundaries
- Easements
- Right of Way
- City Limits
- Government Lots
- Section Lines
- County Boundary
- Lakes

Lake County Property Appraiser (LCPA) digital Geographic Information System (GIS) cadastral maps are produced solely for ad valorem property assessment purposes and are provided to the public for informational purposes only. LCPA's GIS cadastral maps are NOT legal land surveys and should not be used or relied upon as such. No warranties, expressed or implied, are provided for the map data herein, its positional or thematic accuracy, its use, or its interpretation.



ASSESSMENT MAP  
**LAKE COUNTY, FLORIDA**  
Aerial Imagery: 2020  
Coordinate System: NAD 1983 HARN StatePlane Florida East FIPS 0901 Feet

1824	1825	1826	1827	1828	1829
1830	1831	1832	1833	1834	1835
1836	1837	1838	1839	1840	1841
1842	1843	1844	1845	1846	1847
1848	1849	1850	1851	1852	1853
1854	1855	1856	1857	1858	1859
1860	1861	1862	1863	1864	1865
1866	1867	1868	1869	1870	1871
1872	1873	1874	1875	1876	1877
1878	1879	1880	1881	1882	1883
1884	1885	1886	1887	1888	1889
1890	1891	1892	1893	1894	1895
1896	1897	1898	1899	1900	

T19-R24-Sec23 S1/2

Date: 10/23/2020