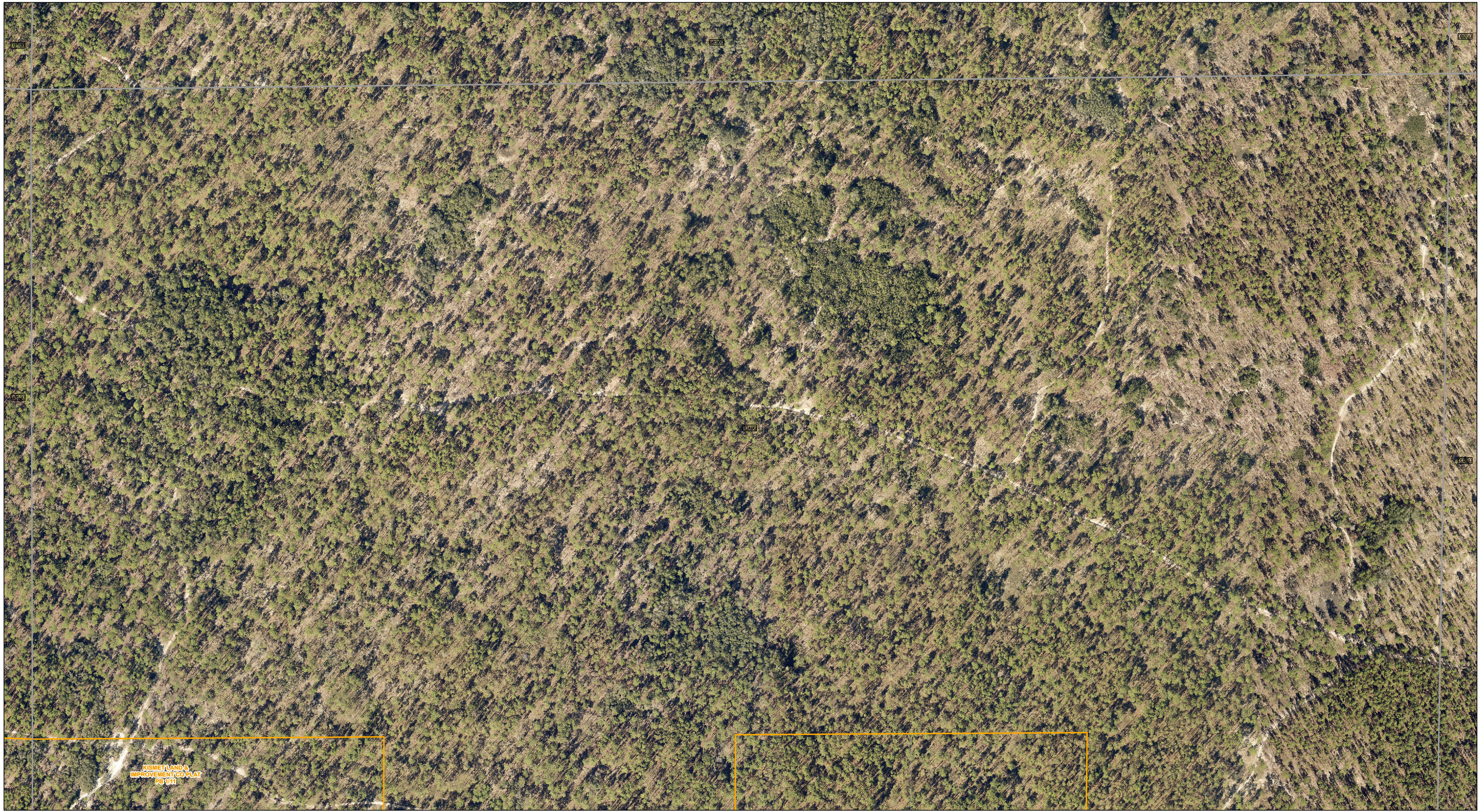
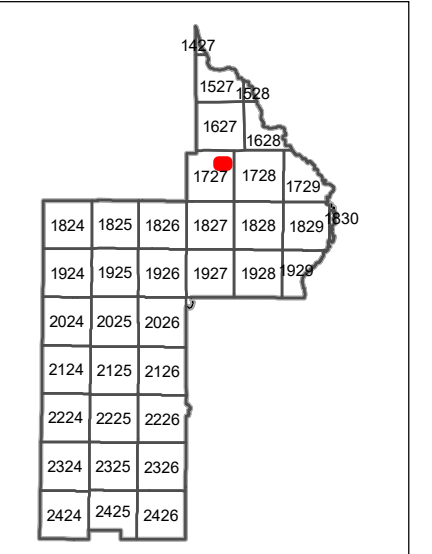




www.lakecopropappr.com
CAREY BAKER
LAKE COUNTY PROPERTY APPRAISER
320 W. MAIN STREET
TAVARES, FLORIDA 32778



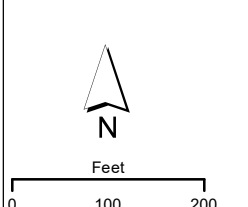
KISMET LAND & IMPROVEMENT CO PLAT PG 111



1624	1625	1626	1627	1628
1924	1925	1926	1927	1928
2024	2025	2026		
2124	2125	2126		
2224	2225	2226		
2324	2325	2326		
2424	2425	2426		

- Tax Parcels
- Easements
- Government Lots
- Subdivision Lots
- Right of Way
- Section Lines
- Subdivision Blocks
- City Limits
- County Boundary
- Subdivision Boundaries
- Lakes

Lake County Property Appraiser (LCPA) digital Geographic Information System (GIS) cadastral maps are produced solely for ad valorem property assessment purposes and are provided to the public for informational purposes only. LCPA's GIS cadastral maps are NOT legal land surveys and should not be used or relied upon as such. No warranties, expressed or implied, are provided for the map data herein, its positional or thematic accuracy, its use, or its interpretation.



ASSESSMENT MAP
LAKE COUNTY, FLORIDA
Aerial Imagery: 2020
Coordinate System: NAD 1983 HARN StatePlane Florida East FIPS 0901 Feet

T17-R27-Sec11 N1/2
Date: 10/22/2020