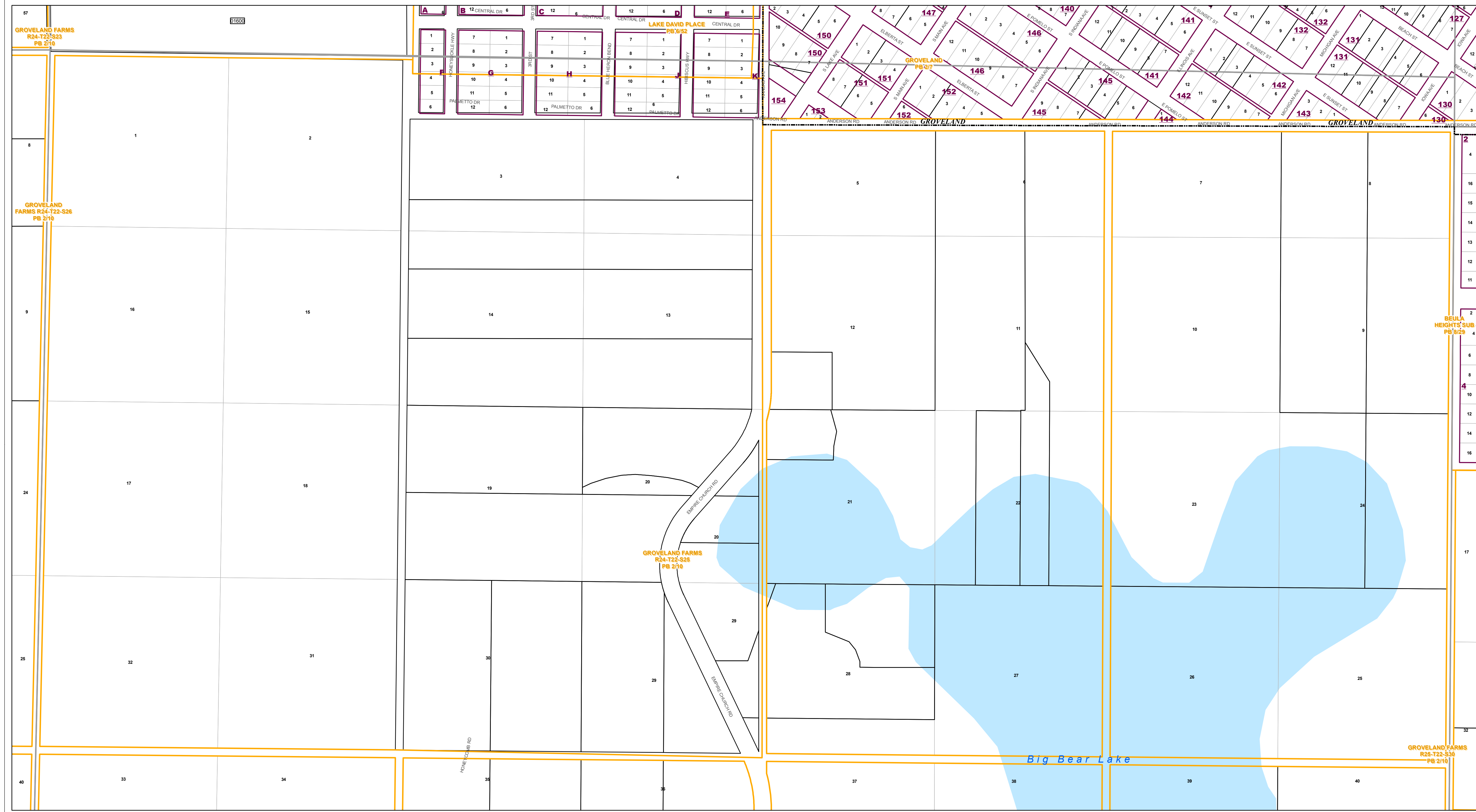




www.lakecopropappr.com
CAREY BAKER
LAKE COUNTY PROPERTY APPRAISER
320 W. MAIN STREET
TAVARES, FLORIDA 32778



Legend:

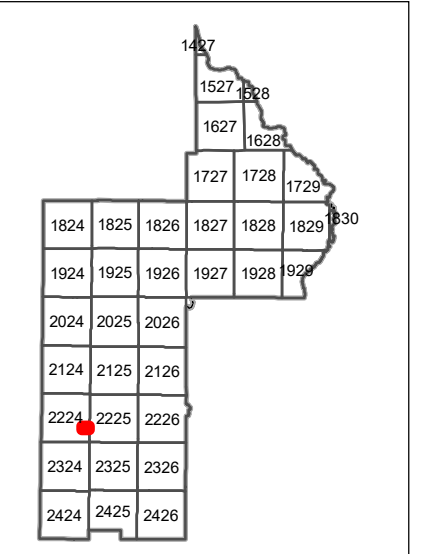
- Tax Parcels (Black outline)
- Subdivision Lots (Thin grey outline)
- Subdivision Blocks (Thick grey outline)
- Subdivision Boundaries (Orange outline)
- Easements (Blue hatched area)
- Right of Way (Dashed line)
- City Limits (Dotted line)
- Lakes (Blue area)
- Government Lots (Green outline)
- Section Lines (Thin grey outline)
- County Boundary (Thick grey outline)

Lake County Property Appraiser (LCPA) digital Geographic Information System (GIS) cadastral maps are produced solely for ad valorem property assessment purposes and are provided to the public for informational purposes only. LCPA's GIS cadastral maps are NOT legal land surveys and should not be used or relied upon as such. No warranties, expressed or implied, are provided for the map data herein, its positional or thematic accuracy, its use, or its interpretation.

ASSESSMENT MAP
LAKE COUNTY, FLORIDA

0 100 200 Feet

Coordinate System: NAD 1983 HARN StatePlane Florida East FIPS 0901 Feet



T22-R24-Sec25 N1/2
Date: 10/23/2020

Path: \\lakegov.bcclogis\Workgroups\PropertyAppraiser\TaxMaps\2021\TaxMap_HalfSection_Updated.mxd