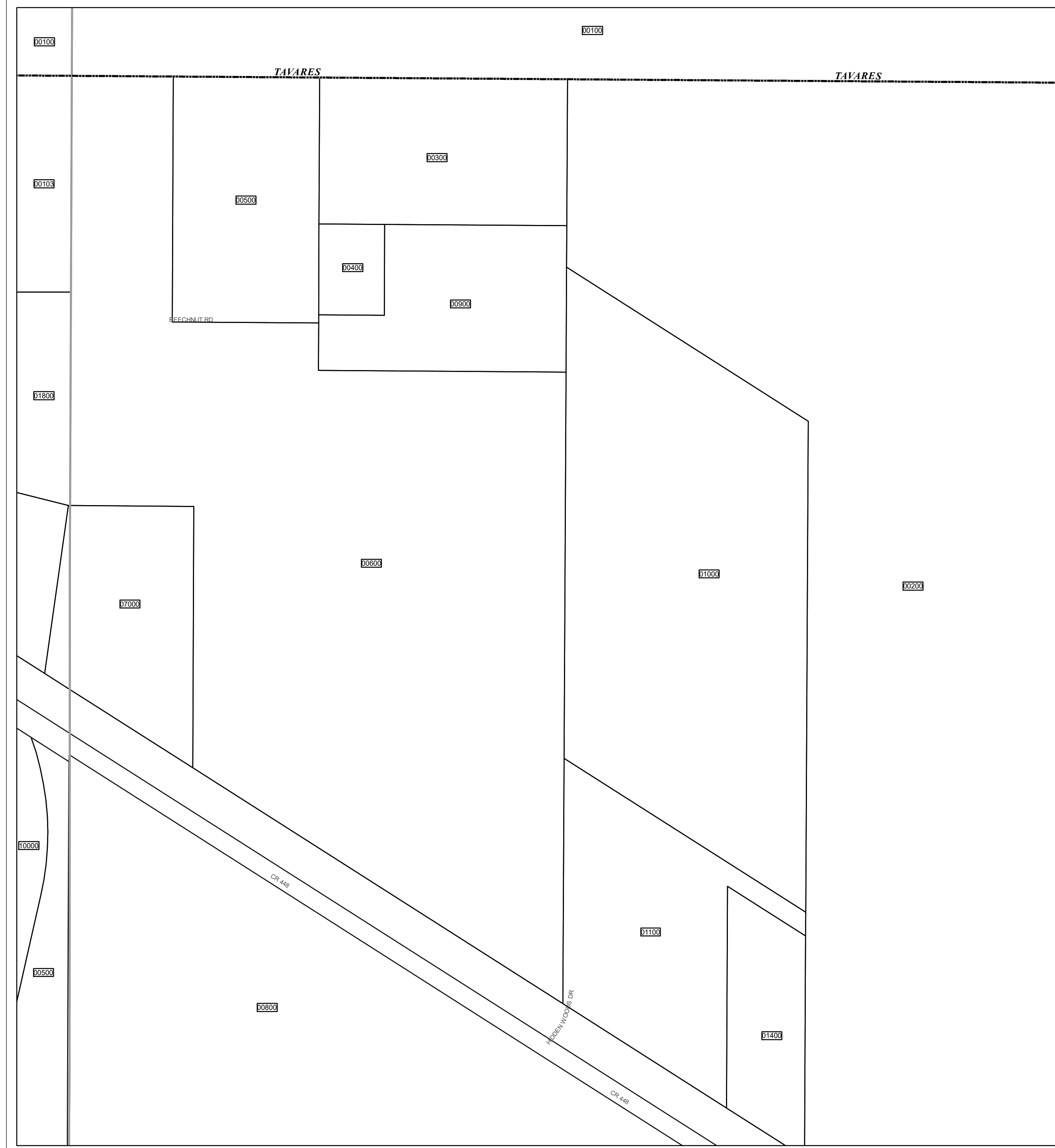




www.lakecopropappr.com
 CAREY BAKER
 LAKE COUNTY PROPERTY APPRAISER
 320 W. MAIN STREET
 TAVARES, FLORIDA 32778



		00600	00500	00300	01000	00300	00500	73
				00600				OLD MILL RUN/SUB PB 26/14
1	27	53	79	105	131	1		
2	28	54	80	106	132	2		
3	29	55	81	107	133	3		
4	30	56	82	108	134	4		
5	31	57	83	109	135	5		
6	32	58	84	110	136	6		
7	33	59	85	111	137	7		
8	34	60	86	112	138	8		
9	35	61	87	113	139	9		
10	36	62	88	114	140	10		
11	37	63	89	115	141	11		
12	38	64	90	116	142	12		
13	39	65	91	117	143	13		
14	40	66	92	118	144	14		
15	41	67	93	119	145	15		
16	42	68	94	120	146	16		
17	43	69	95	121	147	17		
18	44	70	96	122	148	18		
19	45	71	97	123	149	19		
20	46	72	98	124	150	20		
21	47	73	99	125	151	21		
22	48	74	100	126	152	22		
23	49	75	101	127	153	23		
24	50	76	102	128	154	24		
25	51	77	103	129	155	25		
26	52	78	104	130	156	26		
		SUNSET GROVES UNIT 2 PB 21/28		CHALLENGER DR		SUNSET GROVES UNIT 3 PB 21/28		
1	8	18	30	43	56	69		
2	9	19	31	44	57	70		

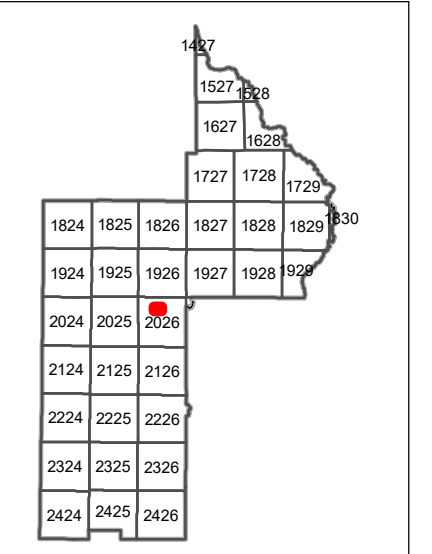
Legend:

- Tax Parcels
- Subdivision Lots
- Subdivision Blocks
- Subdivision Boundaries
- Easements
- Right of Way
- City Limits
- Lakes
- Government Lots
- Section Lines
- County Boundary

Lake County Property Appraiser (LCPA) digital Geographic Information System (GIS) cadastral maps are produced solely for ad valorem property assessment purposes and are provided to the public for informational purposes only. LCPA's GIS cadastral maps are NOT legal land surveys and should not be used or relied upon as such. No warranties, expressed or implied, are provided for the map data herein, its positional or thematic accuracy, its use, or its interpretation.



ASSESSMENT MAP
 LAKE COUNTY, FLORIDA
 Coordinate System: NAD 1983 HARN StatePlane Florida East FIPS 0901 Feet



T20-R26-Sec09 N1/2
 Date: 10/23/2020

Path: \\lakegov.bcclogis\Workgroups\PropertyAppraiser\TaxMaps\2021\TaxMap_HalfSection_Updated.mxd