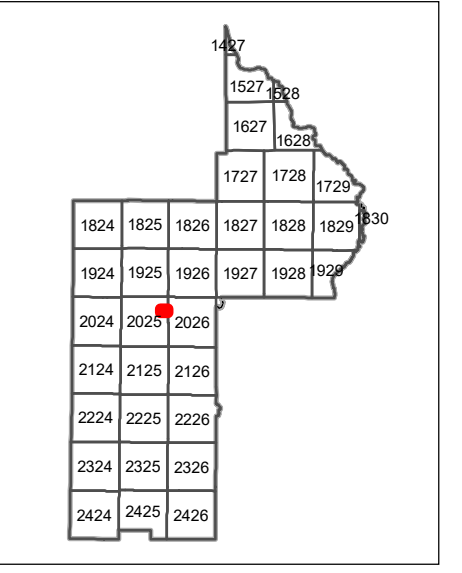
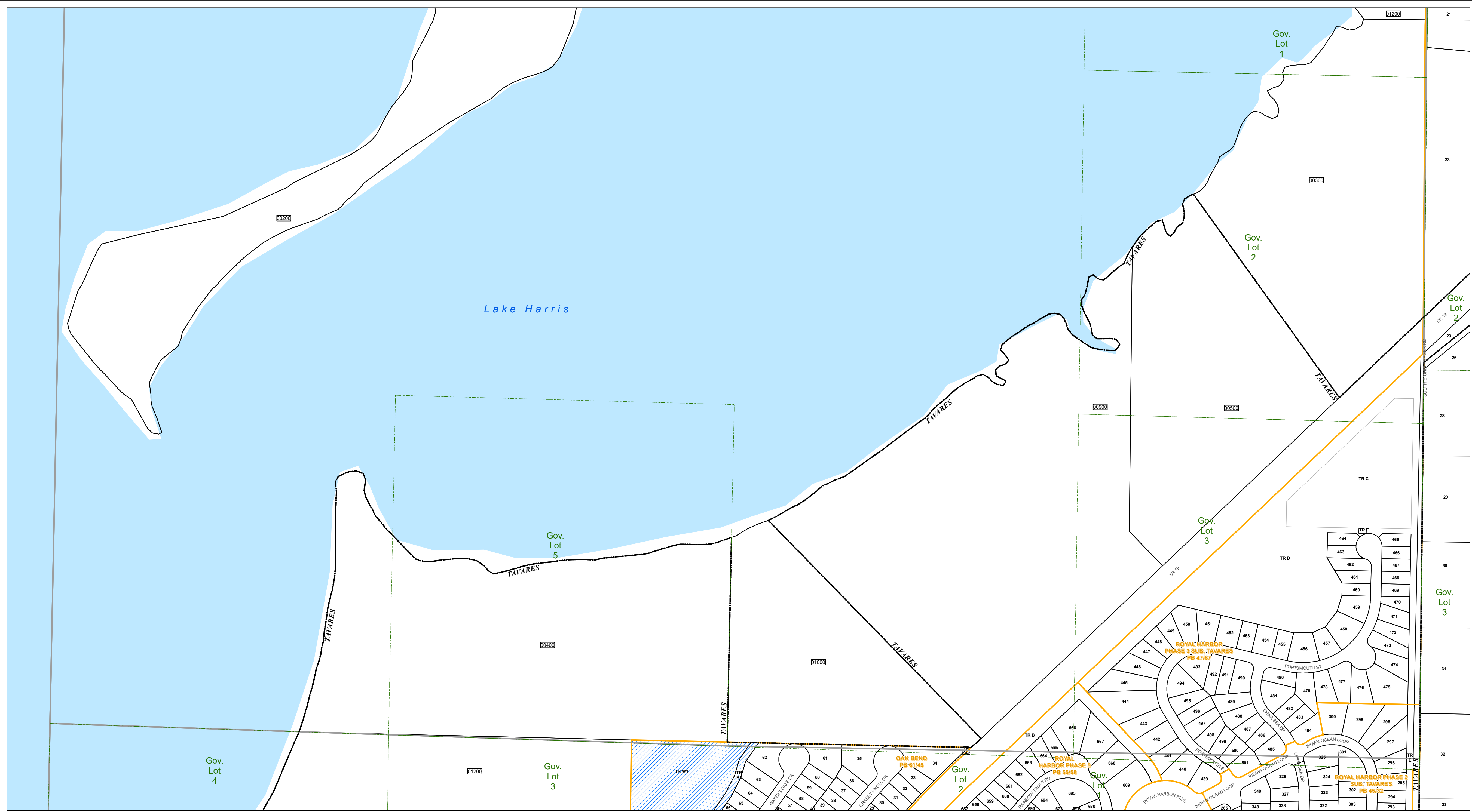




www.lakecopropappr.com
 CAREY BAKER
 LAKE COUNTY PROPERTY APPRAISER
 320 W. MAIN STREET
 TAVARES, FLORIDA 32778



- Tax Parcels
- Subdivision Lots
- Subdivision Blocks
- Subdivision Boundaries
- Easements
- Right of Way
- City Limits
- Government Lots
- Section Lines
- County Boundary
- Lakes

Lake County Property Appraiser (LCPA) digital Geographic Information System (GIS) cadastral maps are produced solely for ad valorem property assessment purposes and are provided to the public for informational purposes only. LCPA's GIS cadastral maps are NOT legal land surveys and should not be used or relied upon as such. No warranties, expressed or implied, are provided for the map data herein, its positional or thematic accuracy, its use, or its interpretation.

ASSESSMENT MAP
LAKE COUNTY, FLORIDA

Date: 10/23/2020

Coordinate System: NAD 1983 HARN StatePlane Florida East FIPS 0901 Feet

T20-R25-Sec12 S1/2
 Date: 10/23/2020

Path: \\lakegov.boclogis\Workgroups\PropertyAppraiser\TaxMaps\2021\TaxMap_HalfSection_Updated.mxd