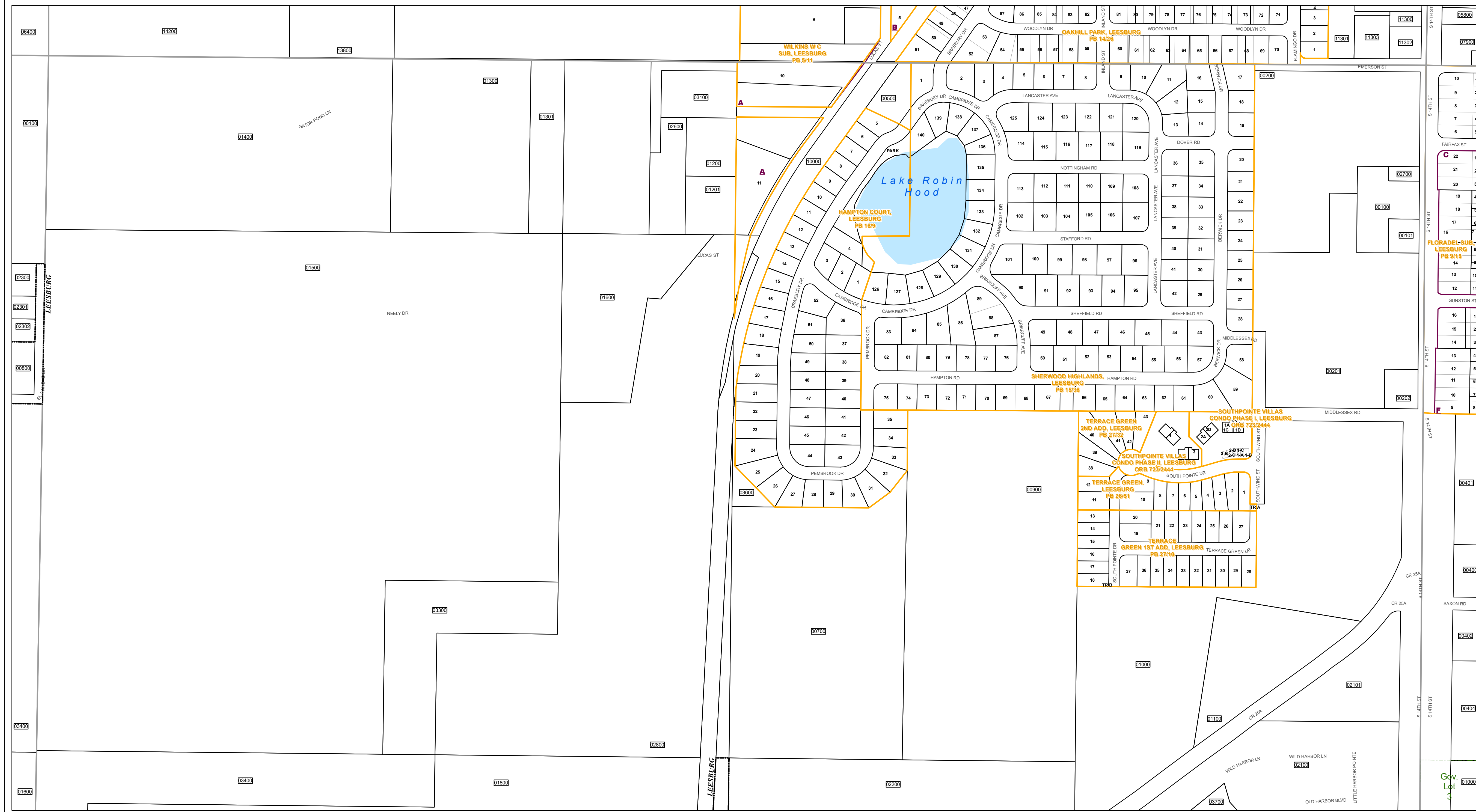




www.lakepropappr.com
CAREY BAKER
LAKE COUNTY PROPERTY APPRAISER
320 W. MAIN STREET
TAVARES, FLORIDA 32778



10	1
9	2
8	3
7	4
6	5
5	6
4	7
3	8
2	9
1	10
11	1
10	2
9	3
8	4
7	5
6	6
5	7
4	8
3	9
2	10
1	11
12	1
11	2
10	3
9	4
8	5
7	6
6	7
5	8
4	9
3	10
2	11
1	12

1427	1527	1627	1727	1827	1927
1627	1727	1827	1927	2027	2127
1827	1927	2027	2127	2227	2327
2027	2127	2227	2327	2427	2527
2227	2327	2427	2527	2627	2727
2427	2527	2627	2727	2827	2927

Legend:

- Tax Parcels (Black outline)
- Subdivision Lots (Thin grey outline)
- Subdivision Blocks (Thick grey outline)
- Subdivision Boundaries (Orange outline)
- Easements (Blue hatched)
- Right of Way (Dashed line)
- City Limits (Dotted line)
- Lakes (Blue fill)
- Government Lots (Green outline)
- Section Lines (Thin grey outline)
- County Boundary (Thick grey outline)

Lake County Property Appraiser (LCPA) digital Geographic Information System (GIS) cadastral maps are produced solely for ad valorem property assessment purposes and are provided to the public for informational purposes only. LCPA's GIS cadastral maps are NOT legal land surveys and should not be used or relied upon as such. No warranties, expressed or implied, are provided for the map data herein, its positional or thematic accuracy, its use, or its interpretation.

ASSESSMENT MAP
LAKE COUNTY, FLORIDA

Coordinate System: NAD 1983 HARN StatePlane Florida East FIPS 0901 Feet

T19-R24-Sec34 N1/2
Date: 10/23/2020

Path: \\lakegov.bcclogis\Workgroups\PropertyAppraiser\TaxMaps\2021\TaxMap_HalfSection_Updated.mxd