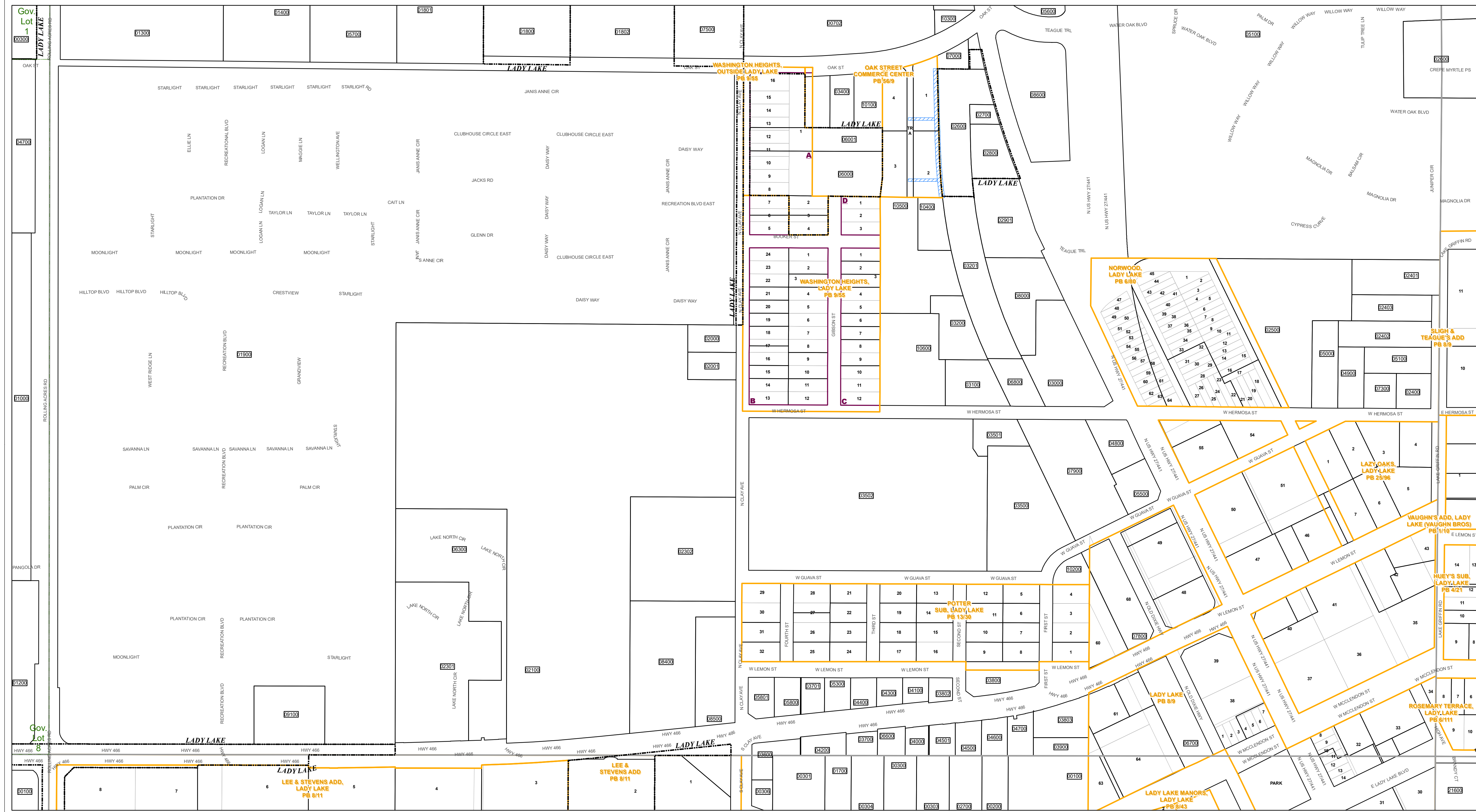




www.lakecopappr.com
CAREY BAKER
LAKE COUNTY PROPERTY APPRAISER
320 W. MAIN STREET
TAVARES, FLORIDA 32778



Path: \\lakegov\bcclgis\Workgroups\PropertyAppraiser\TaxMaps\2021\TaxMap_HalfSection_Updated.mxd

- Tax Parcels
- Subdivision Lots
- Subdivision Blocks
- Subdivision Boundaries
- Easements
- Right of Way
- City Limits
- Lakes
- Government Lots
- Section Lines
- County Boundary

Lake County Property Appraiser (LCPA) digital Geographic Information System (GIS) cadastral maps are produced solely for ad valorem property assessment purposes and are provided to the public for informational purposes only. LCPA's GIS cadastral maps are NOT legal land surveys and should not be used or relied upon as such. No warranties, expressed or implied, are provided for the map data herein, its positional or thematic accuracy, its use, or its interpretation.



ASSESSMENT MAP
LAKE COUNTY, FLORIDA
Coordinate System: NAD 1983 HARN StatePlane Florida East FIPS 0901 Feet

1524	1525	1526	1527	1528	1529
1530	1531	1532	1533	1534	1535
1536	1537	1538	1539	1540	1541
1542	1543	1544	1545	1546	1547
1548	1549	1550	1551	1552	1553
1554	1555	1556	1557	1558	1559
1560	1561	1562	1563	1564	1565
1566	1567	1568	1569	1570	1571
1572	1573	1574	1575	1576	1577
1578	1579	1580	1581	1582	1583
1584	1585	1586	1587	1588	1589
1590	1591	1592	1593	1594	1595
1596	1597	1598	1599	1600	1601

T18-R24-Sec17 S1/2
Date: 10/23/2020