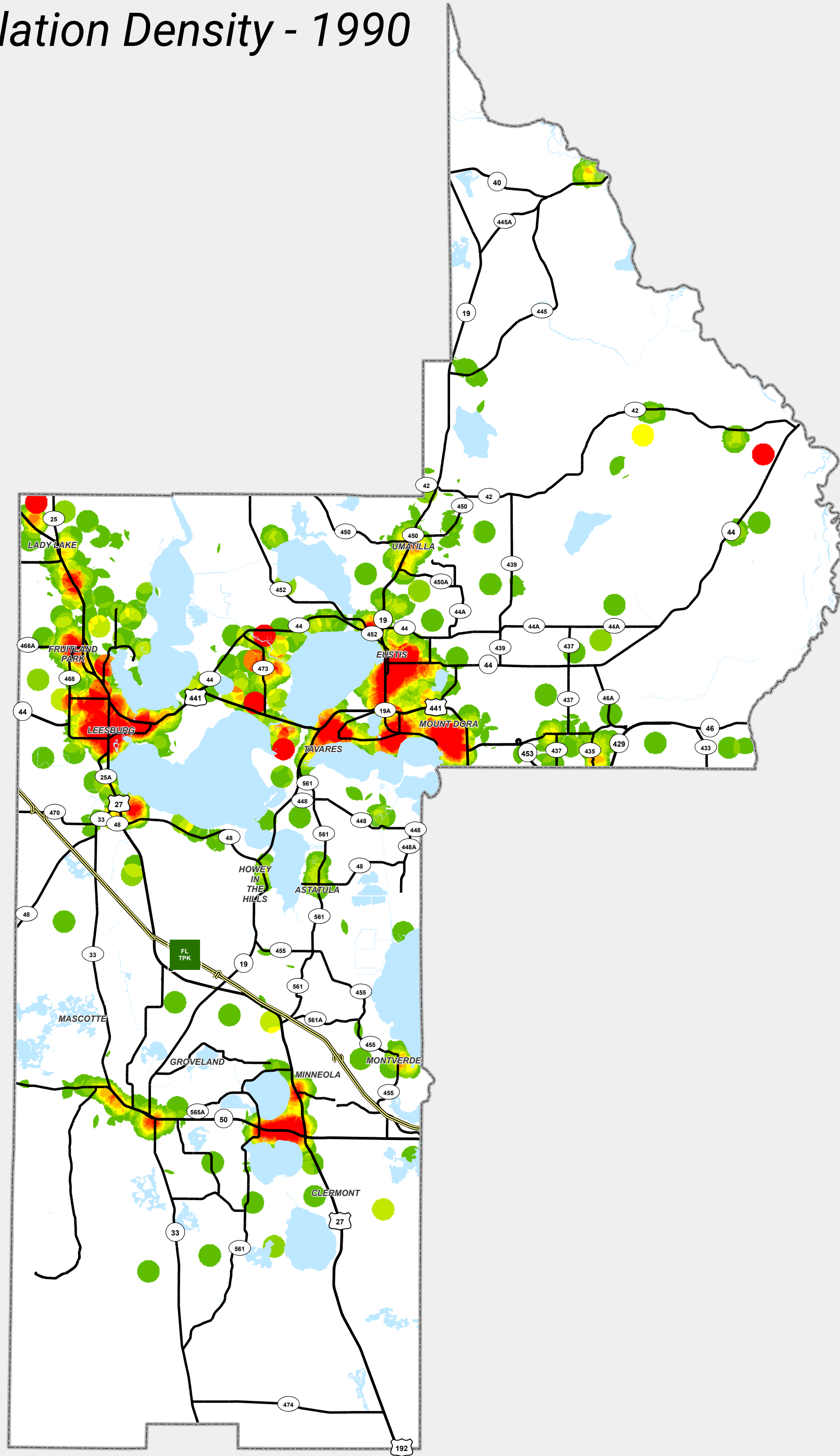
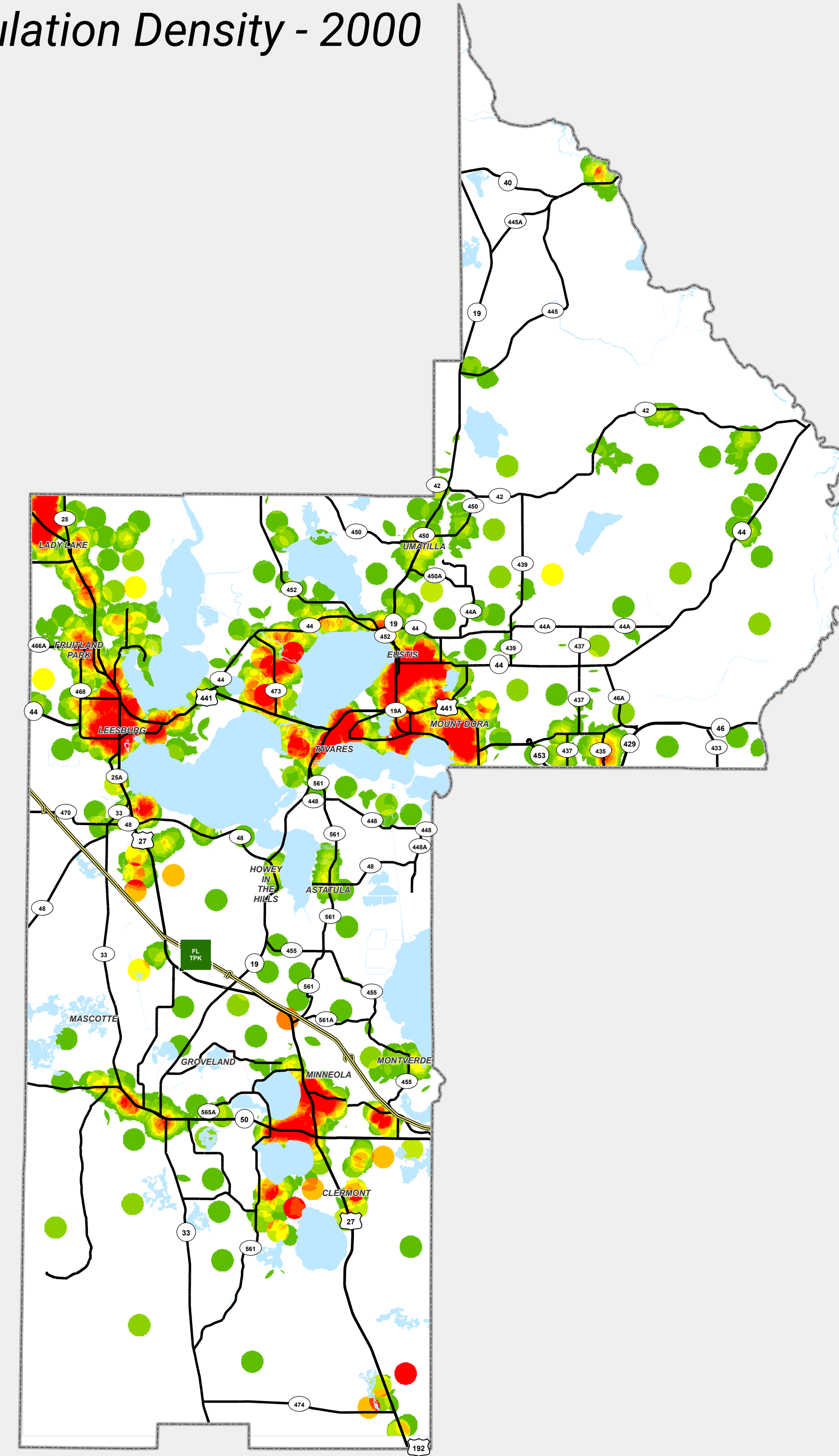


Population Growth in Lake County -- 1990 to 2020

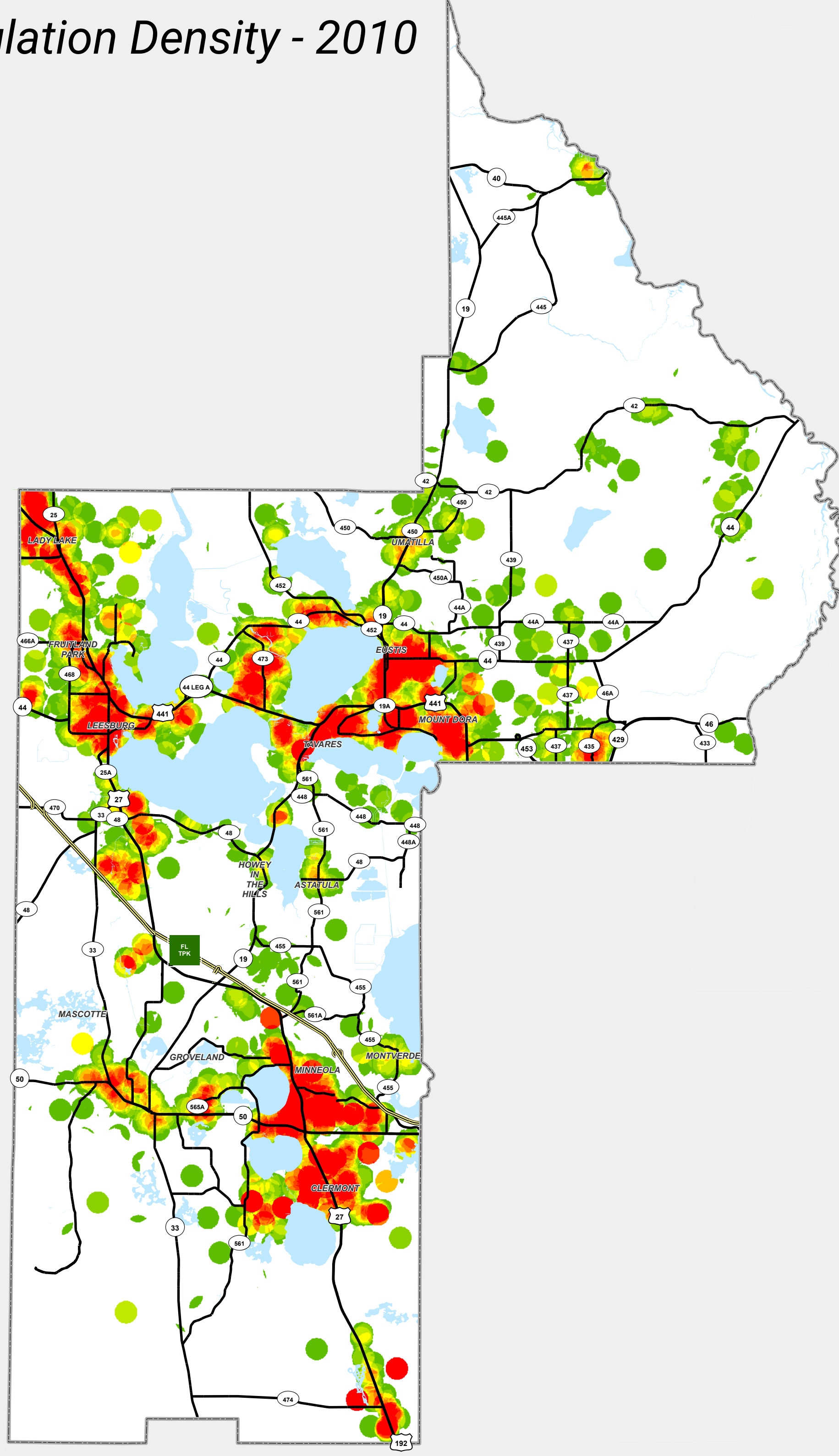
Population Density - 1990



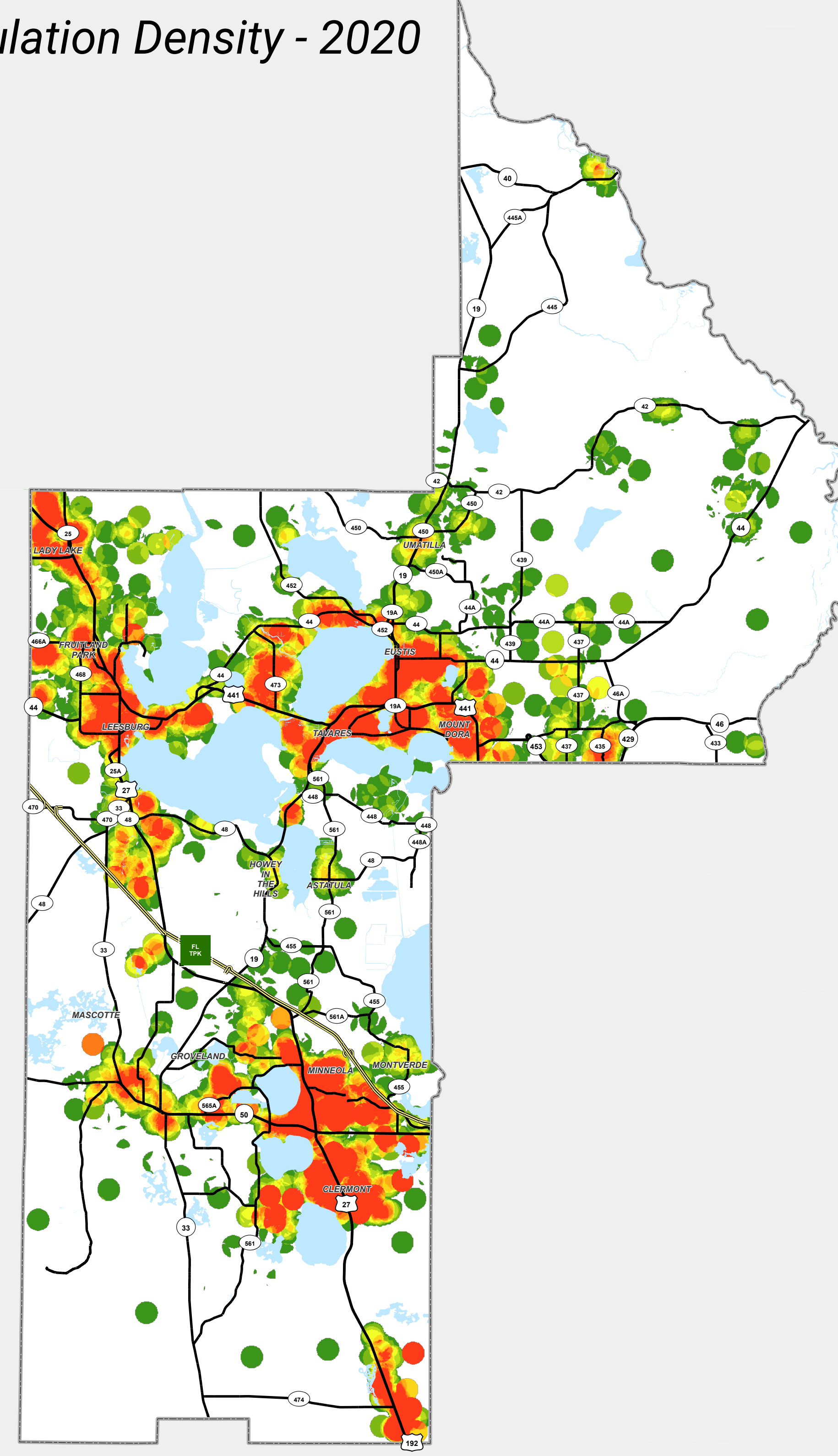
Population Density - 2000



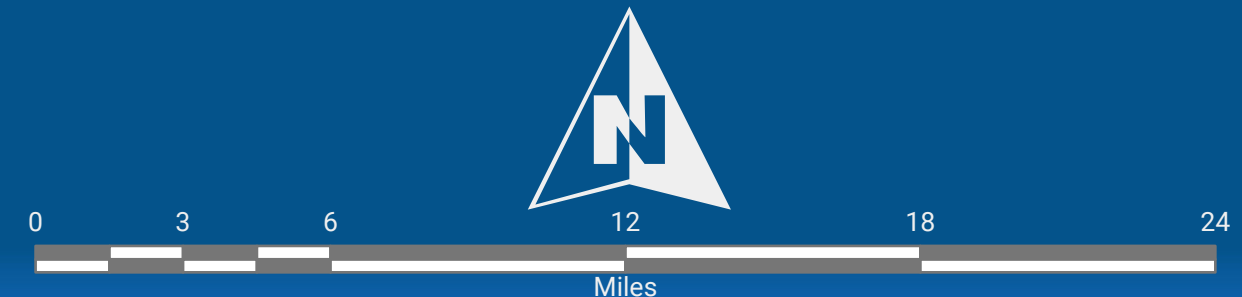
Population Density - 2010



Population Density - 2020



Path: G:\Work\MapGIS_Draft\Projects\Census2020\PopulationComparison1990_2020.aprx



Population Density per Square Mile

0 - 200	600 - 800	1,200 - 1,400
200 - 400	800 - 1,000	1,400 - 1,600
400 - 600	1,000 - 1,200	1,600 and up

DATA SOURCES:
US Census Bureau

MAP DATE: 8/17/2021 PREPARED BY: Lake County Enterprise Support

This map product was prepared from a Geographic Information System established by the Lake County Board of County Commissioners. Its employees, agents and personnel, make no warranty as to its accuracy, and in particular its accuracy as to labeling, dimensions, contours, property boundaries, or placement of location of any map features thereon. The Lake County Board of County Commissioners, its employees, agents and personnel MAKE NO WARRANTY OF MERCHANTABILITY OR WARRANTY FOR FITNESS OF USE FOR A PARTICULAR PURPOSE EXPRESS OR IMPLIED WITH RESPECT TO THIS MAP PRODUCT. Independent verification of all data contained on this map product should be obtained by any user of this map.