

## A Users Guide to the Lake County Connect Interactive Map

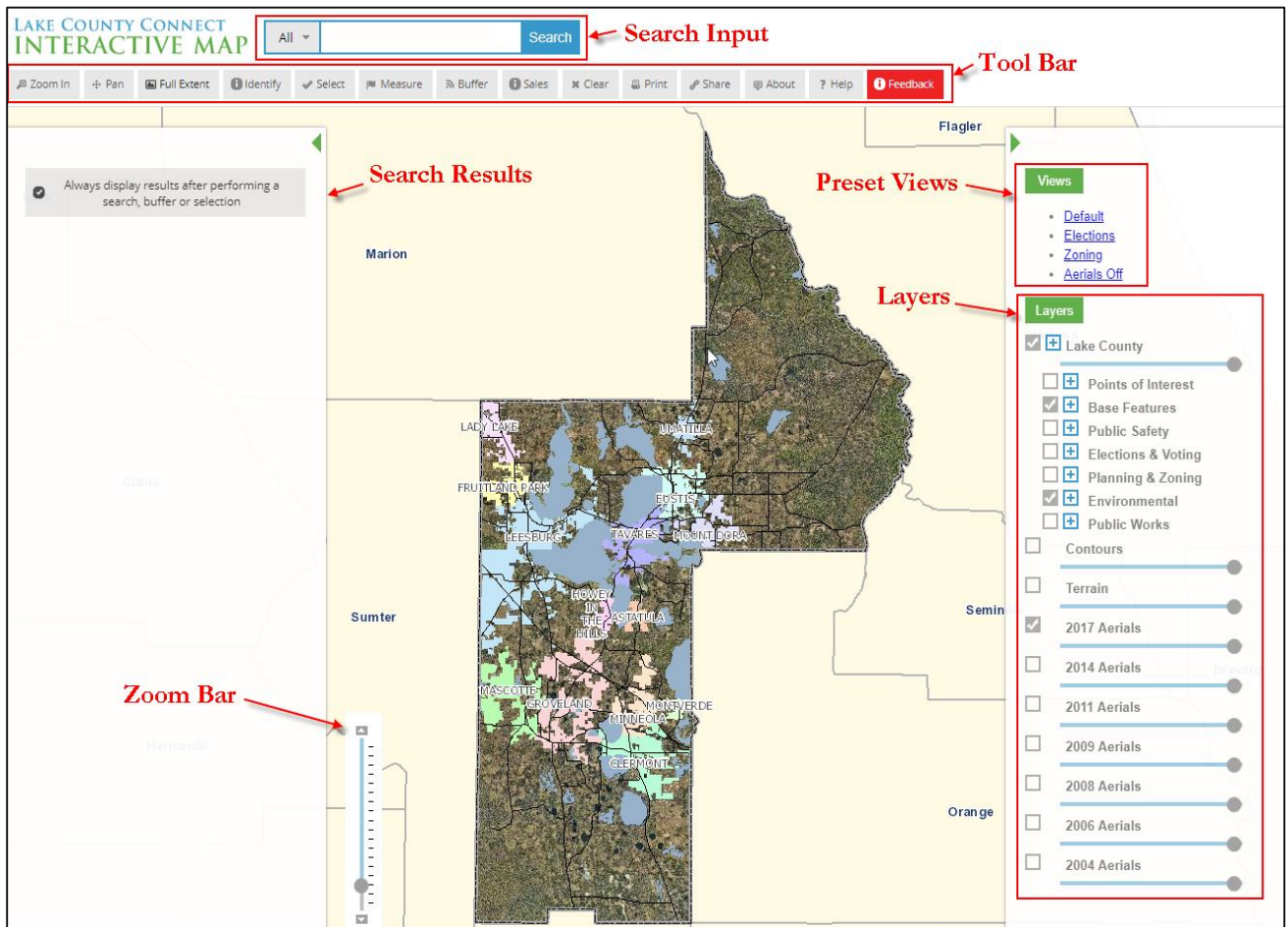
Revisions

Initial Document Creation	3/22/2018

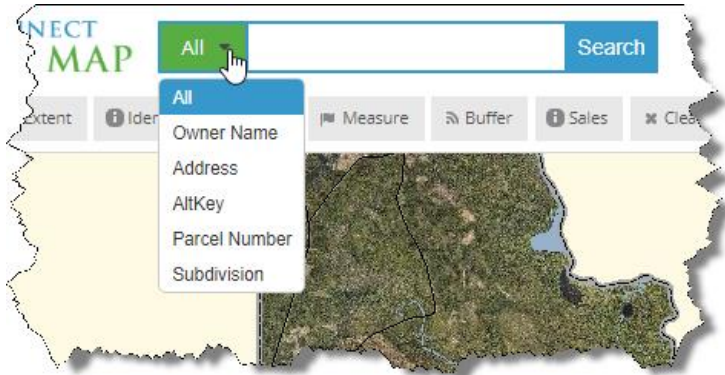
**\*\*\* Caveat \*\*\***

The Lake County Connect Interactive Map works best when using the [Google Chrome](#) browser. Some functionality may be limited or not available if using some other browser.

**1. Parts of the map**



- **Search Input:** Use this input box to enter a property owner name, address, alternate key number, parcel number, or subdivision name. Press Enter on your keyboard or click the **Search** button on the right.

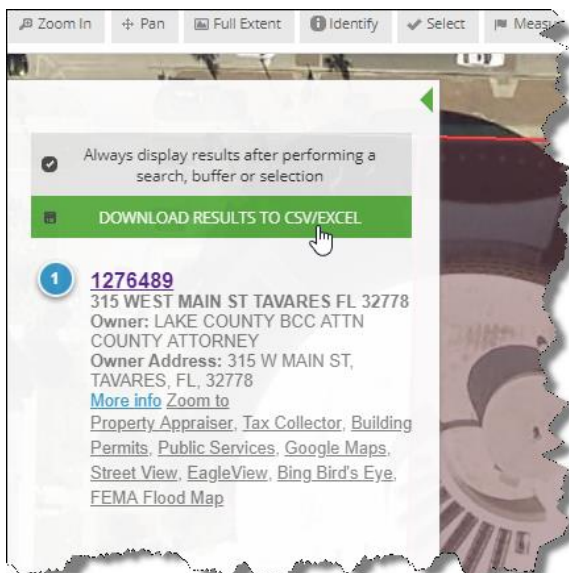


For a quicker search, filter your search type by clicking the drop-down arrow and choosing the type of input information you have.

- **Search Results pane:** This is where the results of searches and other queries will be displayed. Use the green arrow at the top of this pane if you want to hide the results.

Results can be downloaded as a CSV/Excel file for use in other programs or analysis. The file will automatically be added to your computer in the Downloads folder with a generic “Results(x).csv” file name. You can then rename that file and save it to a more appropriate location on your computer, or print a hard copy.

Additional information can be found by clicking any of the accompanying links in the results:



*More Info* – additional Tax Parcel attribute information

*Property Appraiser* – Record card for that property

*Tax Collector* – Tax info for that property

*Building Permits* – Permits issued on that property

*Public Services* – a map of public services including solid waste, recycling, and yard waste pick-up schedules

*Google Maps* – take advantage of additional functionality in Google Maps like routing

*Street View* – Google Maps Street View

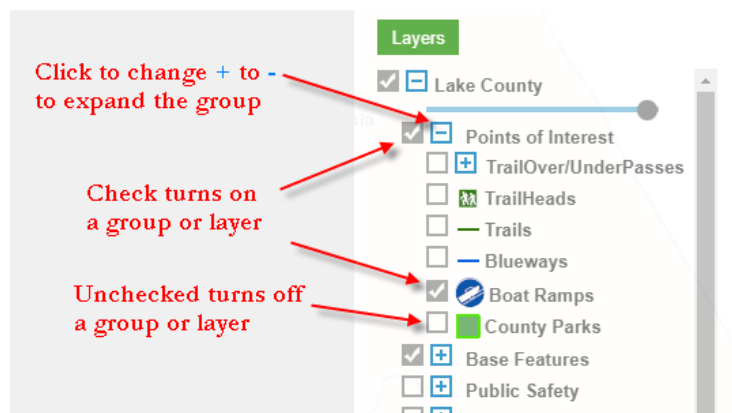
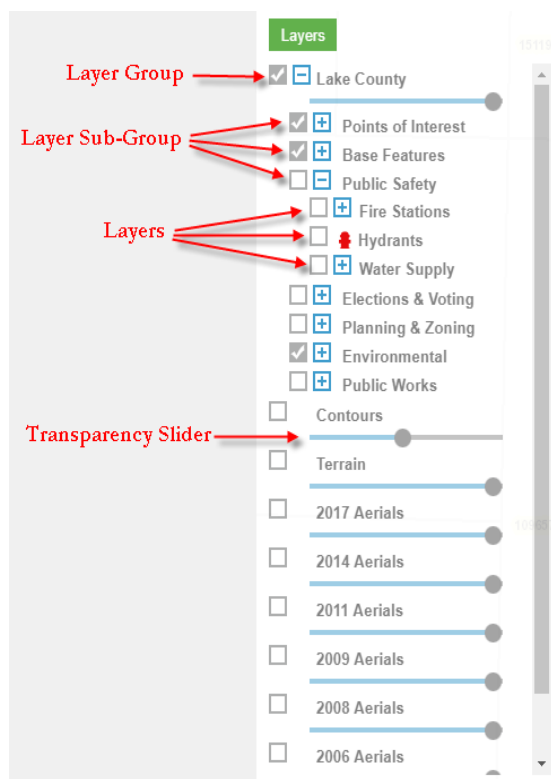
*Eagle view* – Property Appraisers oblique imagery to view the sides of buildings

*Bing Maps* – view the property in Bing Maps

*FEMA Flood Map* – view flood information near that property

- **Tool Bar:** These are the tools available to move around in the map, select and identify features, measure distances, etc. See **Section 2** for tool functionality.
- **Preset Views:** Choosing one of these four will automatically change the map to show only the layers needed for specific views of the data.
  - Default** view restores the map to its original configuration.
  - Elections** view shows only the layers associated with voting districts, polling places, and election jurisdictions.
  - Zoning** view shows only the layers associated with planning and zoning.
  - Aerials Off** turns off the aerial imagery for a less cluttered view of the underlying data.
- **Layers:** This is the list of data groups and layers available in the map. Checking on the box associated with each group turns on that group and makes its layers visible. Expanding a group by clicking the + sign shows individual layers within that group or sub-group. Groups may be turned on/off collectively, or individual layers can be turned on/off independently to create custom map views.

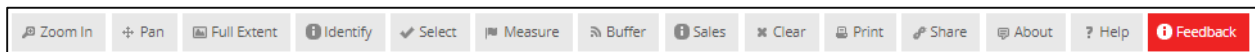
The transparency of a group of layers can be adjusted by sliding the **Transparency Slider** bar back and forth.




- **Zoom Bar:** This allows the user to zoom in or out by sliding the bar up and down using the mouse. Other options include using the Zoom In tool (see **Section 2**), or using the roller on a mouse.



## 2. The Tools



 Zoom In

Zoom In:

Use this tool to zoom in to a small area of the map.

1. Click the tool button.
2. Click and hold the cursor on the map and drag a box around the area to be enlarged.
3. Release the cursor.


Alternate ways to zoom in to the map also include using the Zoom Bar on the map or the roller on a mouse.

 Pan

Pan:

Use this tool to move from side to side or up and down in the map.

1. Click the tool button.
2. Click and hold the cursor on the map and drag to a new position.

 Full Extent

Full Extent:

Use this tool to return the map to the default full view of Lake County.

1. Click the tool button and the map will automatically be restored to the original default position.

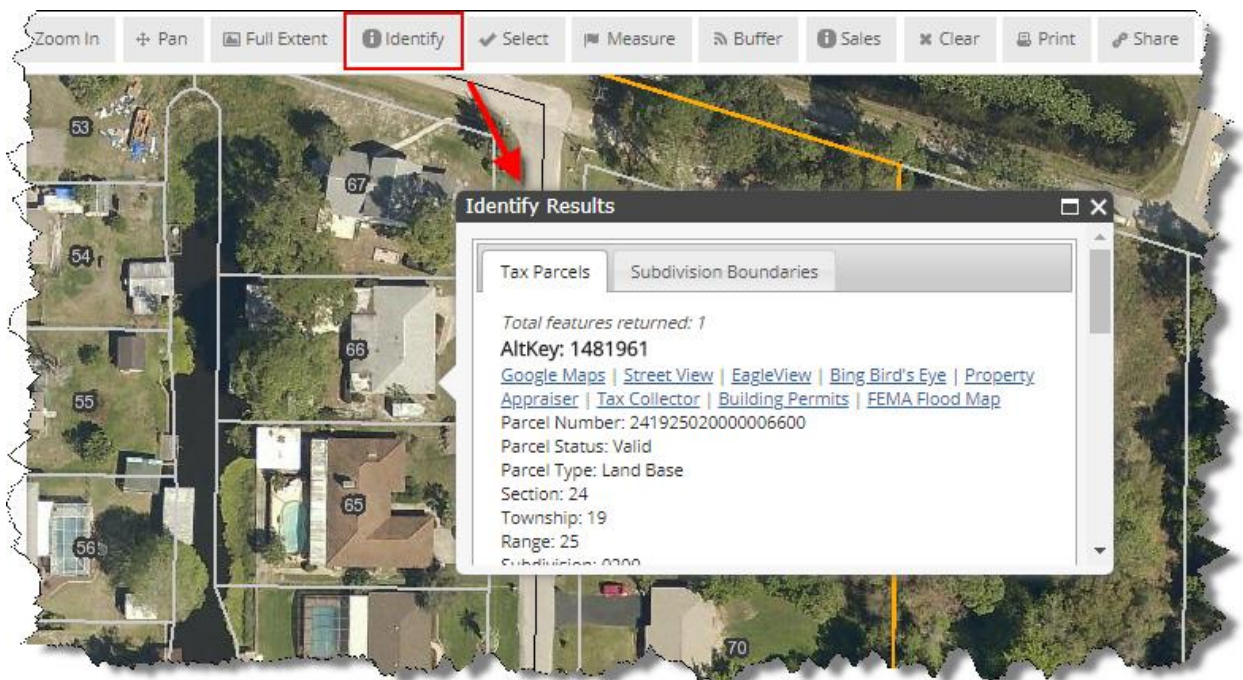


## Identify

### Identify:

Use this tool to reveal data about a feature such as Tax Parcel information, Street Name, Zoning Code, etc.

1. Click the tool button.
2. Click on a feature in the map. A pop-up will display with the features attributes. If more than one layer is displayed at the same time the pop-up will have tabs across the top – one for each layer. Simply click on the tab you are interested in to view its information.
  - a. The data layer must be checked on in the **Layers** list to be able to identify it.
3. Click the X in the upper right corner of the pop-up to dismiss the window.

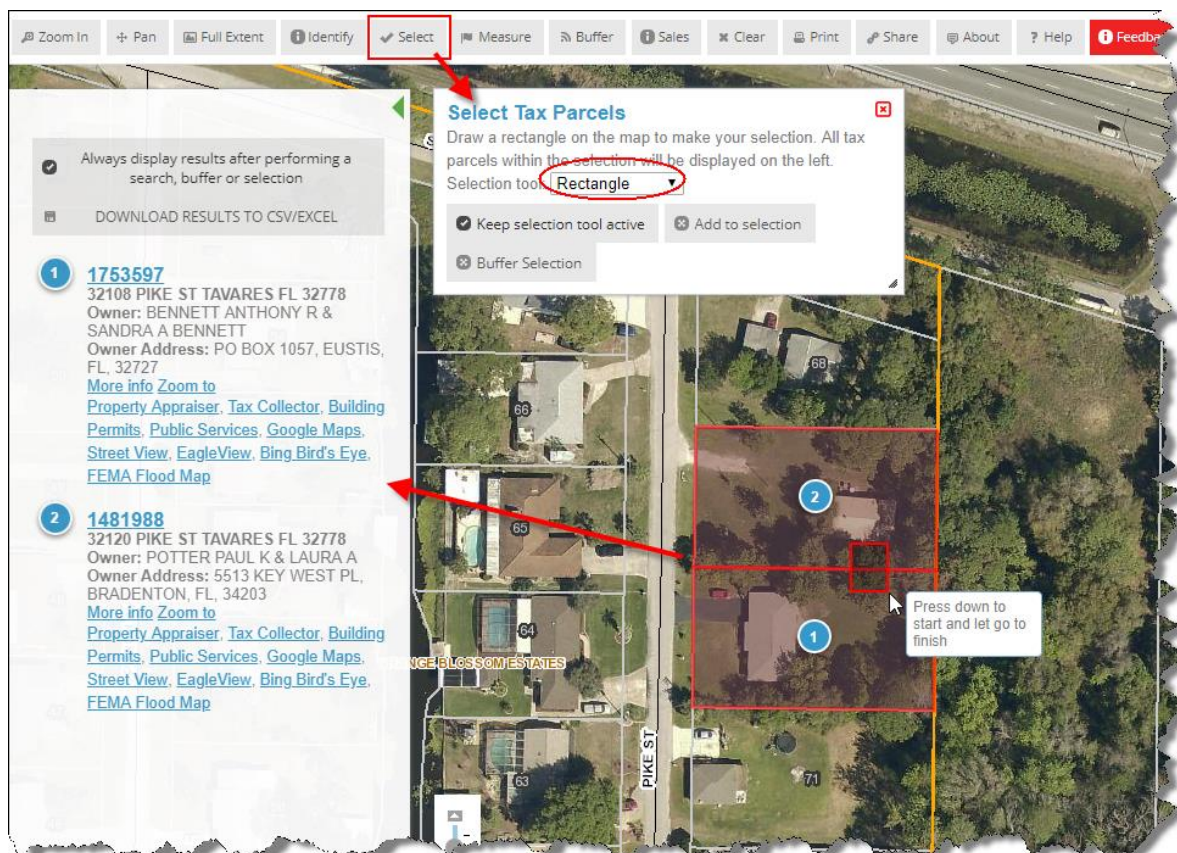


Select

Select:

Use this tool to select one or more Tax Parcels to return information about them.

1. Click the tool button.
2. From the pop-up, choose the selection method. You can choose from **Rectangle**, **Point**, or **Freehand Line**.
3. Use the mouse to drag a rectangular box over multiple Tax Parcels, click a point on one Tax Parcel, or draw a freehand line over multiple Tax Parcels.
4. Click **Keep selection tool active** to make repetitive selections without having to re-click the **Select** tool button.
5. Click **Add to selection** if you want to add additional selections to one already made.
6. Click **Buffer Selection** if you want to select Tax Parcels within a buffer distance of your initial selection.
  - a. Enter a buffer distance in feet to select all Tax Parcels within that distance. The buffer distance is measured from the selected Tax Parcel(s) boundary.
7. All results will be displayed in the **Search Results** pane.
  - a. Results include links to additional resources and information. See **Search Results** pane in **Section 1**.





✖ Clear

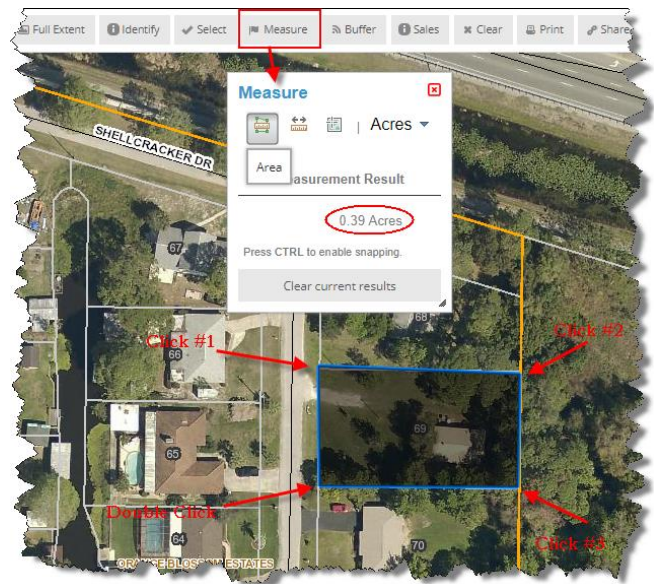
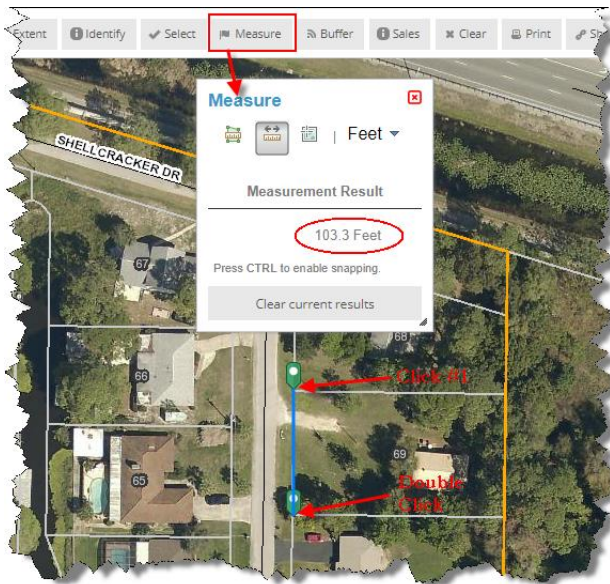
Click the **Clear** tool button to clear all selections.

Measure

Measure:

Use this tool to measure distances or areas, as well as find the latitude/longitude coordinates of a point.

1. Click the tool button.
2. Choose between **Area**, **Distance**, and **Location** by clicking the appropriate button.
3. Set the units of measure you wish to use: feet, miles, acres, square miles, degrees, etc.
4. Use the mouse to describe the line, area or point you wish to measure.
  - a. Click once at the beginning of the measurement and once for each additional vector.
  - b. Double click to end the measurement.
  - c. The measurements will be totaled up and displayed in the Measure window.
5. Click **Clear current results** to start another measurement.



✖ Clear

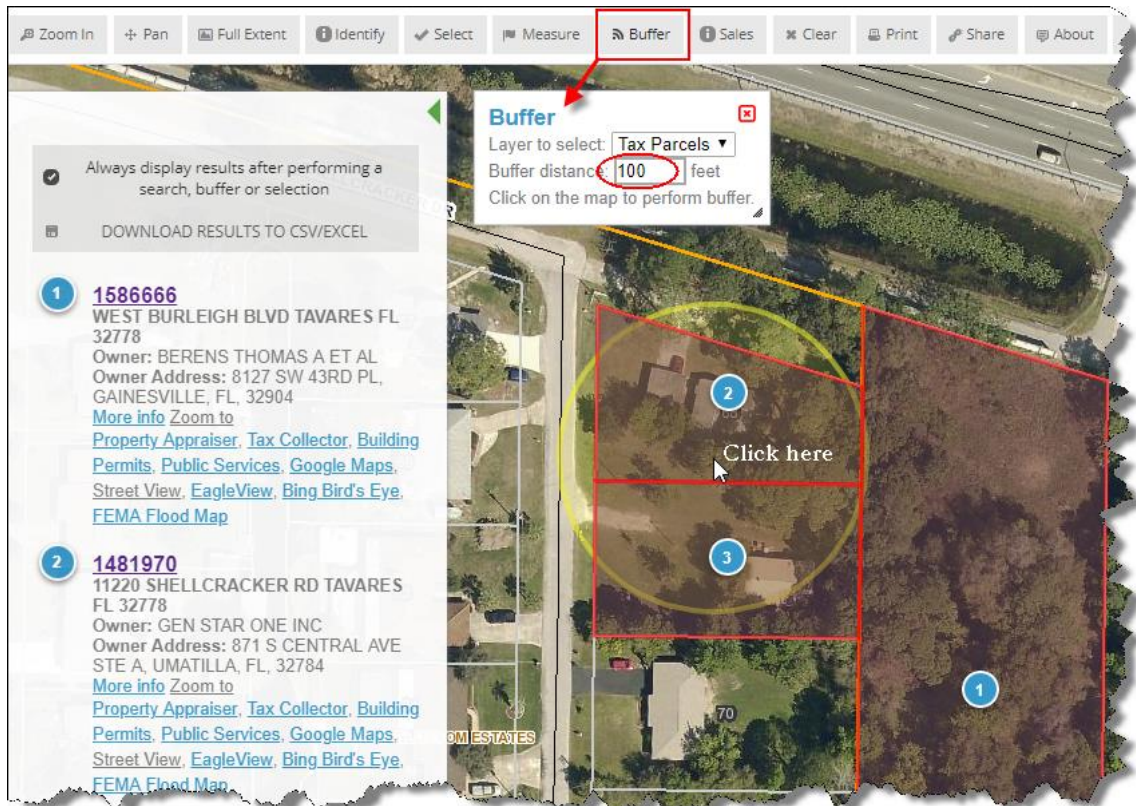
Click the **Clear** tool button to clear all results.

Buffer

### Buffer:

Use this tool to select Tax Parcels within a radius around a single point.

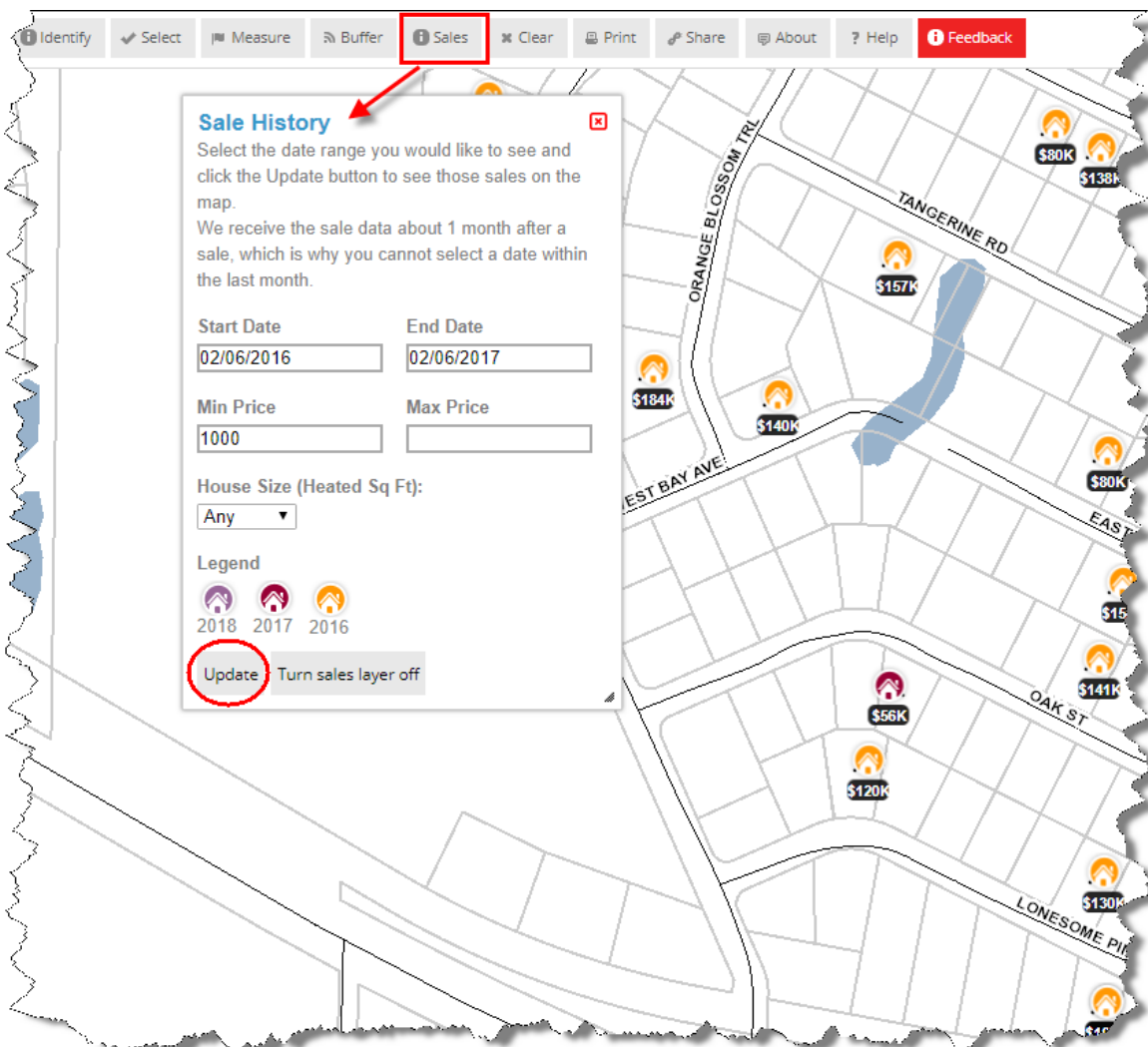
1. Click the tool button.
2. Enter the **Buffer distance** in feet.
3. Click a point on the map.
4. A radius will be drawn around that point and all Tax Parcels intersected by it will be selected with their information displayed in the **Search Results** pane.
  - a. This tool is different from the **Buffer Selection** option in the **Select** tool in that this tool creates a radius around a single point, not around a Tax Parcel boundary.



Sales:

Use this tool to see the previous three years of property sales.

1. Click the tool button.
2. Enter a date range to search for.
3. Enter a Minimum and Maximum price range (optional).
4. Select the House Size (optional).
5. Click Update.
  - a. The data is scale dependent, so you may need to zoom in closer to see the results.
  - b. This tool returns ALL sales in the chosen date range – homes, commercial, and vacant land.
6. Click **Turn sales layer off** to clear the data.

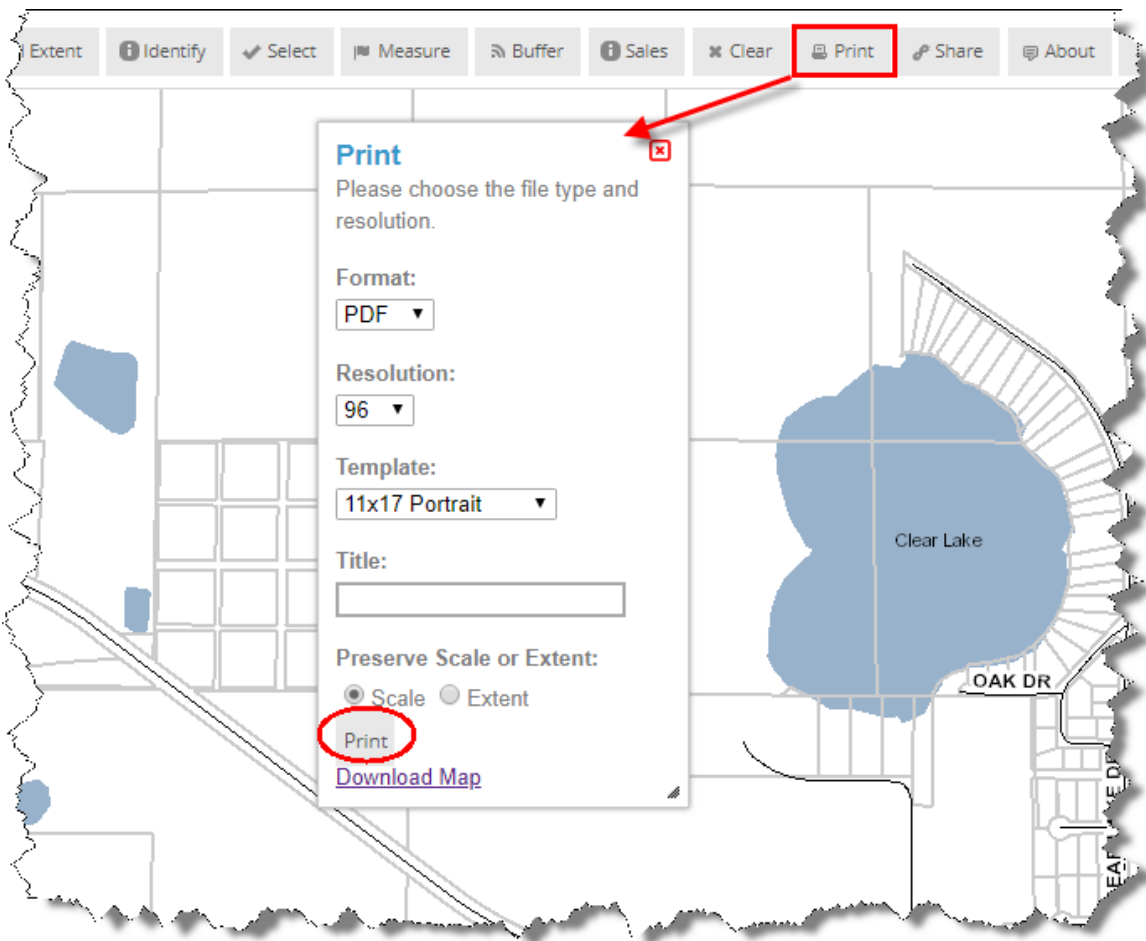




### Print:

Use this tool to create an electronic document that can be printed.

1. Click the tool button.
2. Select the file **Format**.
  - a. Choose from PDF, PNG, JPG, EPS, SVG
3. Select the **Resolution**.
4. Select the **Template** – page size and orientation.
5. Enter a **Title** (optional).
6. Select **Preserve Scale or Extent**.
7. Click **Print**.
8. Once the file is generated there will be a link under the **Print** button to **Download Map**.
  - a. Click this link to view your map in a browser.
  - b. From there you can save or print the file.

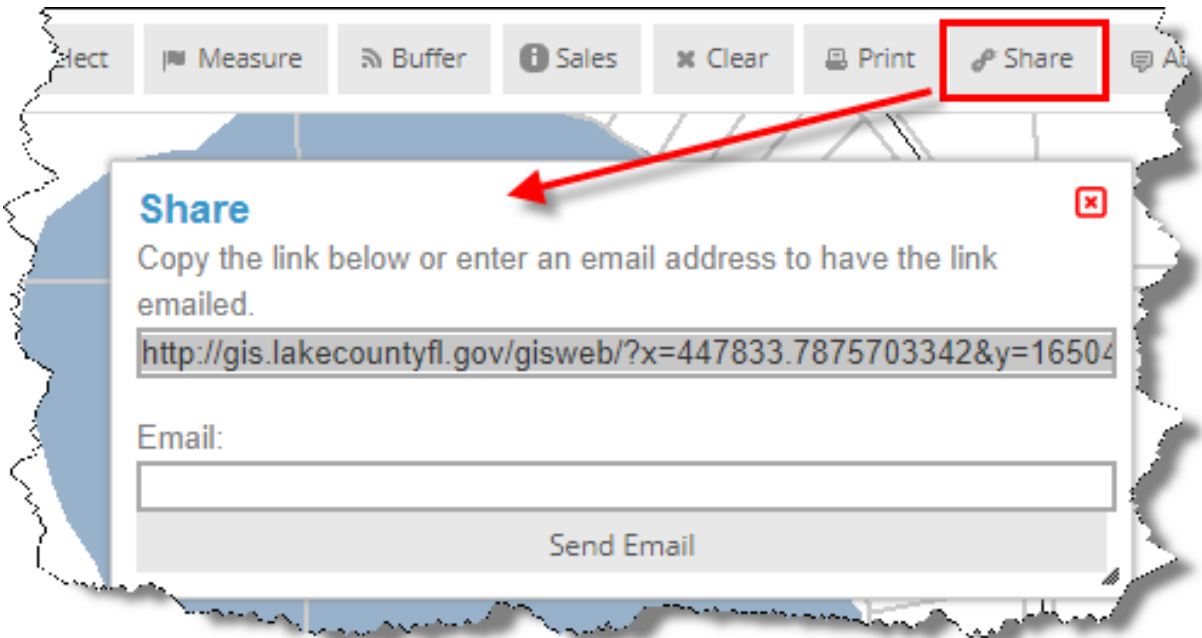


Share

Share:

Use this tool to share a map view with others.

1. Zoom to the view you wish to share and turn on/off needed layers.
2. Click the tool button.
3. Either copy and paste the link into an email or other document  
OR
4. Enter an email address in the tool to email it directly.
  - a. **Caveat:** This option does not allow you to include a message.



About

About:

This button will give you information about the Lake County Connect Interactive Map, including ownership, who to contact with questions or suggestions, and other links to various GIS data and maps.

Help

Help:

This tool offers the user a step by step walkthrough of the map and its general use.

Feedback

Feedback:

This tool allows the user to suggest enhancements or corrections to the application.



### 3. For additional Help

**For technical assistance with this application contact:**

Erikk Ross, Programming and Application Support Services  
[eross@lakecountyfl.gov](mailto:eross@lakecountyfl.gov) or 343-9792

**For inquiries about the data layers contact the appropriate County Office:**

**Points of Interest** – Parks & Trails: 742-3870

**Streets** – GIS, Jim Dowling: 343-9775 ext. 3936

**Addresses** – Public Safety Support, Larry Martin: 253-1818

**City Limits** – GIS Jim Dowling: 343-9775 ext. 3936

**Property**

Tax Parcels, Subdivisions, Conservation Easements – Property Appraiser: 253-2150

**Public Safety**

Fire Stations, Hydrants, Water Supply – Fire Rescue: 343-9458

**Elections & Voting**

Voting Polls/Precincts, various Districts – Supervisor of Elections: 343-9734

**Planning & Zoning**

Impact Fees, LDRs, Future Land Use, Joint Planning Areas, Zoning, etc. – Planning & Zoning: 343-9739

**Environmental**

Flood Zones, Wetlands, Map Amendments, Elevation Certificates, etc. – Public Works: 253-6000

**Contours, Terrain, Aerials** – GIS: 343-9775