



LOCATION EDUCATION
GROWTH ACCESS
SUCCESS
COMMUNITY
FUTURE
JOBS
VALUE
VISION
RESOURCES
LIFESTYLE
INFRASTRUCTURE
OPPORTUNITY

Lake County

Real Florida. Real Close.

BUSINESS PROSPERITY INVESTMENT
INDUSTRY WORK
SERVICES
DESTINATION TRADE INNOVATION
QUALITY COMMUNITY
BEAUTY TALENT

WELCOME TO LAKE COUNTY, FLORIDA, where we are proud to be “Real Florida. Real Close.” Lake County represents “the other half of Orlando,” with untouched natural resources, historic downtowns and award-winning sports facilities, all within a short driving distance of Orlando’s theme parks and airports.

From state-of-the-art manufacturing companies like CaptiveAire, to the advanced medical facility NeuLife Neurological Center, Lake County is becoming a premier business location for creating higher paying jobs in the Central Florida area.

Home to over 1,000 pristine lakes and rivers, it’s obvious how Lake County got its name. But beyond our lakes is a landscape unique to Florida, where peaceful lands attract hikers to view protected species.

As an added perk, most Lake County residents live just 30 minutes away from Downtown Orlando, Walt Disney World, Universal Studios and the Orlando International Airport. Lake County’s close proximity to Orlando-area amenities and attractions makes it an ideal locale. And, with the construction of the future Wekiva Parkway, Lake County and Orlando will mutually benefit from added connectivity. This all adds up to a quality of life that is second to none. With the pleasure and convenience of a major metropolitan area, combined with a small-town charm and southern hospitality, Lake County offers the perfect balance for businesses and families to grow.

As part of the four-county Metro Orlando region, Lake County is focusing significant resources on regional partnerships to help support existing and future businesses in Central Florida. Lake County’s Economic Development & Tourism Division’s goal is to attract, grow and retain jobs in Lake County while protecting and improving Lake County’s quality of life and unique character. Together with the Board of County Commissioners, the vision continues to work to solidify the area’s growing reputation as a prime business location and is excited at exploring a growing partnership with the city of Orlando.

On behalf of the Lake County Board of County Commissioners, I hope you enjoy your visit to Lake County, and we look forward to working closely with you on future regional projects.

Sincerely,



Sean M. Parks
Chairman

Real Industry

"Any company that is looking to expand or move – they are all looking for a location that is governmentally friendly toward corporate industry, manufacturing and development, and Lake County definitely meets that."

– James Burks, President of Senninger Irrigation



MANUFACTURING makes up **7 PERCENT** of Lake County's **WORKFORCE**, one of the highest rates in Florida.



Lake County is a hub for **AVIATION, AEROSPACE AND DEFENSE**, with Leesburg Airport featuring a **DESIGNATED FOREIGN TRADE ZONE** with **FULL CUSTOMS**.



The Made in Lake website seeks to unify the manufacturing industry, market Lake County manufacturing businesses, foster increased pride in the industry and create new connections, with the overall goal of helping to stimulate the economy.

Visit www.MadeInLake.com for more information.

Lake County boasts **18,000 JOBS** in the **HEALTHCARE INDUSTRY**.



Eustis and northeast Lake County are quickly becoming a **HUB FOR AGRI-TECH BUSINESS AND INNOVATION**.





Real Access

“Access to the Turnpike and major highways such as U.S. Highway 27, I-75 and I-95, help us get our products to our customers along the East Coast.”

- Raul Castroman, QuietFlex Plant Manager

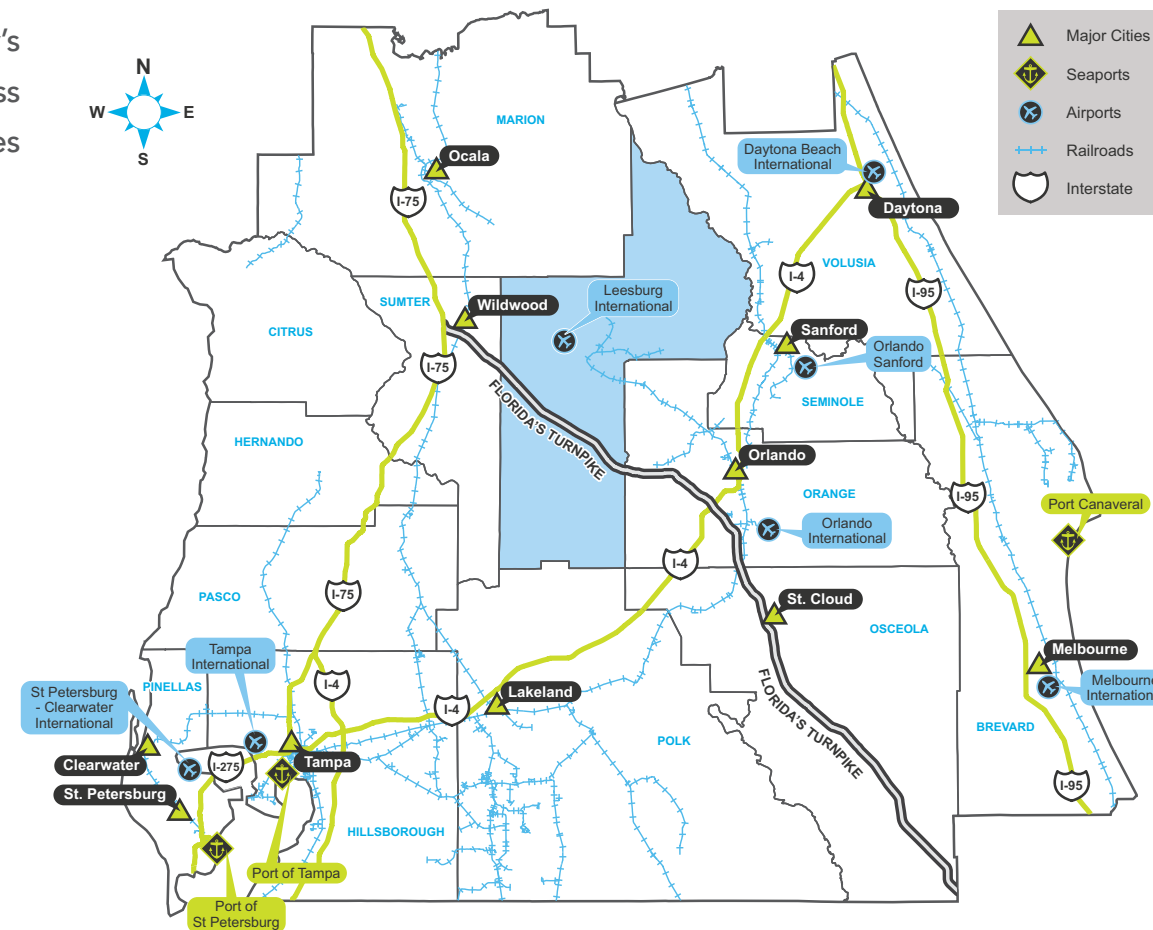
Minneola Interchange

Just 30 minutes from the Orlando International Airport, the new Minneola Interchange on Florida's Turnpike will provide South Lake County significantly enhanced access to Florida's roadway network.

Bordered by the Ocala National Forest to the north, and the hills of Clermont to the south, Lake County is ideally located in the center of the state.

A multitude of major U.S. or state highways travel through or near Lake County, including U.S. Highway 441, U.S. Highway 27, State Road 50, the Florida Turnpike and Interstates 75 and 4. Lake County's transportation network allows for easy and efficient distribution throughout the southeast.

A recent \$11 million investment into Lake County's rail network provides continuous weld access to the main CSX Transportation shipping lines traversing Florida and the southeast.



Lake County is within 60 miles of four international or executive airports and within a 1.5 hour drive of three major sea ports.

Leesburg International Airport, located 35 miles northwest of Orlando, is the central hub for transportation and business in this growing part of Central Florida. With two runways extending up to 6,300 feet, the airport accommodates over 50,000 aircraft takeoffs and landings each year.

The Wekiva Parkway, in northeast Lake County, will connect to State Road 417, completing the beltway around Central Florida while helping to protect the natural resources surrounding the Wekiva River. This estimated \$1.6 billion project includes \$500 million of non-toll road improvements.





Real Value

"Lake County is proactive and continues to reach out to small business owners and support us in every way. Continuous efforts are made to bring businesses and families together through events that range from aviation events to water sports, and many other community activities. Lake County is a beautiful place to be!"

- Debra Bowers, President of Skybolt Aeromotive Corp.

Affordable land and a business-friendly approach make Lake County the ideal place to pursue business expansions across a wide range of industries from local, one-man shops, to multi-national corporations.

With its low cost of living and competitively priced land and commercial real estate, Lake County is an ideal destination to start or grow a business. Lake County offers comfortable living and an extremely affordable business environment, reflected in its low taxes, energy costs and access to travel and distribution networks, amongst others.

Lake County's millage rate is one of the lowest in the region, making it appealing to existing and prospective business owners.

FLORIDA COMPETITIVE ADVANTAGES

- 4th best state in the U.S. for business tax climate (Tax Foundation, 2015)
- 2nd best state for business in the U.S. (Chief Executive Magazine)
- Florida has **NO**:
 - State income tax
 - State level property tax
 - Property tax on business inventories
 - Sales and use tax on goods manufactured or produced in Florida for export
 - Sales tax on manufacturing machinery and equipment

ORLANDO REGIONAL COMPETITIVENESS

- 2nd most competitive business location among large U.S. cities (KPMG, 2016)
- Top 10 cost of living out of 30 Most Populous Metropolitan Statistical Areas (2015 Council for Community Economic Research Estimate)





Real Opportunity

"Over the last five years our companies have had significant growth of over 700 percent. Lake County's Economic Growth Department has offered us a sounding board to discuss concerns regarding future manpower needs, schooling skillset needs for those future employees, as well as advice on other future growth issues."

- Ted and Margie Brozanski, Lake Trucking Company

Lake County is one of the fastest growing counties in the state of Florida. A historical bedroom community to Orlando, Lake County's growth trajectory now includes significant opportunities for economic diversity. Through the identification and development of strategic growth corridors, Lake County is setting the stage for a major expansion of business and industry within its borders.

WELLNESS WAY

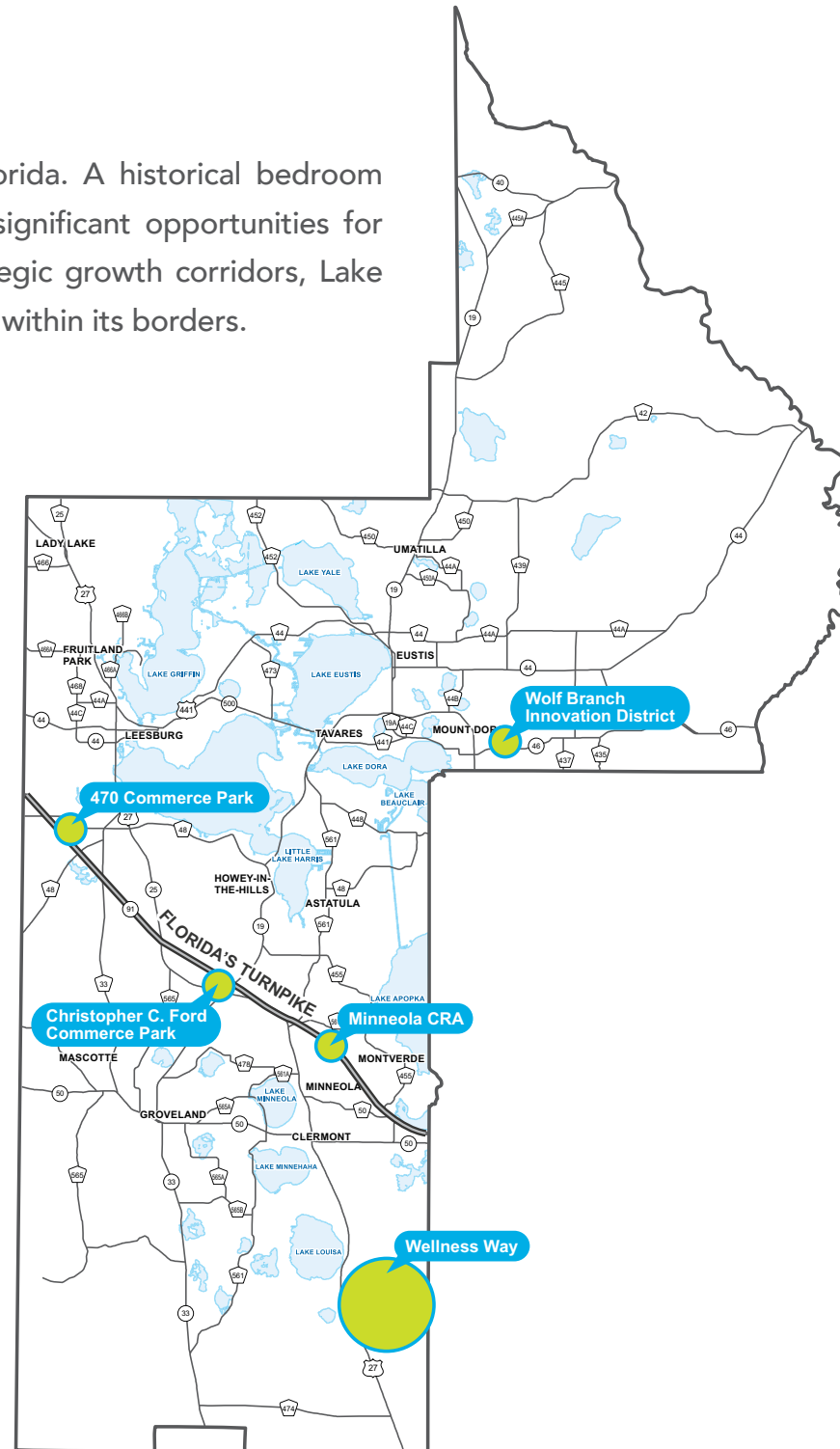
Lake County's largest strategic corridor at 15,500 acres, the Wellness Way Area Plan will leverage South Lake County's existing health and life sciences cluster through the creation of diverse and comprehensive mixed-use master planned developments.

WOLF BRANCH INNOVATION DISTRICT

Lake County and the City of Mount Dora are working to develop a significant employment center situated on 1,300 acres at the terminus of the Wekiva Parkway Extension. It is anticipated that the Innovation District will focus primarily on professional office, medical and light industrial uses.

470 COMMERCE PARK

Lake County's only publically-owned industrial park, the 470 Commerce Park is located at the intersection of Florida's Turnpike and County Road 470. The Park is comprised of over 3,000 acres, all of which are owned by the City of Leesburg.



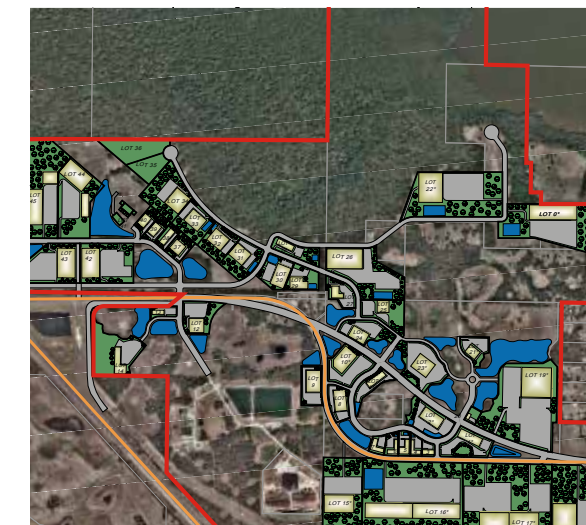
Lake County has been
the 6th fastest
growing county
in Florida
since 2000.

MINNEOLA CRA

With approximately 4,000 acres at the new Minneola Interchange, the Minneola CRA has the capacity to accommodate over 3 million square feet of non-residential space surrounding the Turnpike's newest interchange.

CHRISTOPHER C. FORD COMMERCE PARK

Strategically located on U.S. Highway 27 at the crossroads of State Road 19 and Florida's Turnpike, the Ford Commerce Park is Lake County's largest existing industrial park and is home to over a dozen manufacturing and distribution businesses.





Real Talent

“The Center for Advanced Manufacturing is a game changer for the economic growth and development of Lake County and our region and we can’t wait to begin preparing the skilled manufacturing workforce.”

- Dr. Diane Culpepper, President of Lake Technical College



Talent Pipeline

More than 500,000 students are enrolled at higher education institutions within a 100 mile radius of Lake County.

Lake County works hard to ensure it has an available and well prepared workforce for existing, emerging and prospective businesses by working closely with all of its local workforce partners. Due to this emphasis on workforce training, employers in Lake County have access to a large, talented employee pool with candidates possessing diverse skill-sets and a strong work ethic.



The Orlando region is ranked **sixth for quality of workforce** amongst large U.S. cities (Foreign Direct Investment Magazine)

Florida's workforce is **#3 in the U.S.** (CNBC Best States for Business)

- **Lake-Sumter State College**, voted national learning center of the year, is a three-campus institution serving over 7,500 students. The college offers DirectConnect, a partnership with the **University of Central Florida**. The college's Health Sciences Collegiate Academy is a four-year program offering 9th graders the opportunity to explore health sciences and gain early exposure to college courses, while preparing them for a career in Lake County's expansive healthcare industry.
- Scheduled for completion in 2017, the **Lake County Center for Advanced Manufacturing (CAM) at Lake Technical College** in Eustis will provide future workforce training in the fields of computerized machining, welding and fabrication, and is set to be one of the premier workforce training facilities in Central Florida. In addition, the CAM can provide customized training to meet any company-specific workforce needs.
- **Beacon College** is a four-year accredited liberal arts college which partners with and engages undergraduates who learn differently. Providing an education and campus culture that empowers and guides students along their individual paths to knowledge, self-discovery, and success.





Real Location

“Our clinic attracts patients from the region, other states and countries. They stay in our hotels, eat at our restaurants and tour our attractions. The hospital’s investment in medical technology has led to a healthier community and has made a huge impact on medical tourism locally.”

- Dr. Jamin Brahmbhatt, The Pur Clinic at South Lake Hospital



Lake County is just **35 minutes** from downtown Orlando, ranked in the **top 10** largest cities in the U.S. for infrastructure.

Lake County represents 'the other half' of Orlando, with untouched natural resources, historic downtowns and award-winning sports facilities, all within a short driving distance of theme parks and major airports. The best part?

While Lake County may not boast the largest skyscraper or grandest mall, its close proximity to coastal beaches and Orlando-area businesses and attractions make it a perfect locale for those seeking a quieter and more affordable way of life, without being too far from big-city amenities.

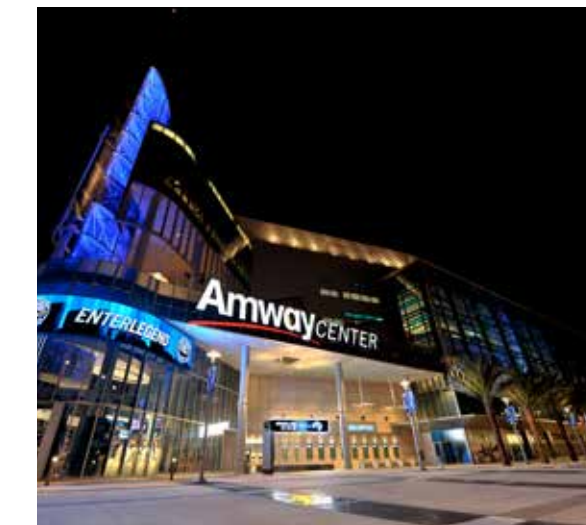
From the Dr. Phillips Center for the Performing Arts to the Amway Center to the recently renovated Camping World Stadium, world-class arts, culture and entertainment surround the area.

The metro-Orlando area, including Lake County, has a multitude of sports and recreation options with more than 100 top-rated golf courses, walking and cycling trails and triathlon-certified training at the National Training Center in Clermont.

If you prefer to watch sports, rather than play them, it's just a short drive to cheer on the NBA's Orlando Magic or join Orlando's most passionate fan base for an Orlando City Lions MLS game.

ORLANDO REGIONAL MARKET

- **World's first** industry-led smart sensor consortium (ICAMR)
- **International leader** in modeling, simulation and training
- **\$15 billion** in investment in infrastructure over the next decade
- **#1 in the U.S.** for job growth in 2015 (U.S. Department of Labor, Bureau of Labor Statistics)
- **Top 10** "American City of the Future" (Foreign Direct Investment (fDi) Magazine, 2015)
- **6th best city** for recreation (WalletHub, 2016)
- **Top 10** best cities for college graduates (Careerbliss.com)





Real Lifestyle

“Lake County is an attractive place for business owners to settle and raise a family due to the unique location and setting. Good schools, tremendous recreational opportunities, and favorable business conditions are among the many qualities that make Lake County attractive.”

- C.A. Vossberg, President of Electron Machine, Umatilla



Montverde Academy

An internationally renowned college preparatory school drawing a student population from over 60 countries. Among the academy's achievements are a 100 percent college acceptance rate and 85 percent college of first choice rate.

From the City of Tavares' "The Seaplane City," to the City of Mount Dora's "Some Place Special," to the City of Clermont's "The Choice of Champions," Lake County boasts 14 distinct municipalities, each with its own small town personality and unique historic downtown district. Dotted with art galleries, antique stores, mom and pop shops and restaurants, Lake County's downtown districts are a refreshing reminder of the way life should be.

Picturesque hills, acres of parks, and of course, lakes and rivers make Lake County a prime destination for any entrepreneur interested in planting their roots and growing both their business and their family.

Any of the county's many waterfront parks, situated beneath a canopy of oak tree hammocks, are a soothing locale for a Sunday afternoon picnic or to stop for a water break while biking one of the area's many trails.

For families, heritage museums, lively festivals and nostalgic train rides add to the allure of scenic Lake County, which has a character all its own. The county highlights its love of the outdoors with the annual Wings & Wildflowers Festival, hosted each October in Leesburg and securing Lake County's place on the map as a premier birding destination.

Offering many options for education, both public and private, children growing up here benefit from individualized, progressive learning experiences giving them the skills needed to succeed in higher education and the workplace.

The Lake County Library System operates nine member libraries and six branch libraries. Focusing on STEM learning, Cooper Memorial Library in Clermont opened the Go Zone Makerspace, designed for children ages 12 and above, as well as adults interested in furthering their learning or beginning their own small businesses.



Visit www.RealFloridaRealClose.com to learn more about our way of life.





Real Beauty

"Lake County has such unique ecosystems ranging from the waterways to the hills. Nature preserves and parks help adults and children escape the rigors of daily life and find peace and solace. Our natural habitats and wildlife are an important part of our daily lives by providing educational, recreational and economic opportunities."

- Cathy and Bruce Brown, B.B. Brown's Gardens and The Florida Scrub-Jay Consortium



Green Mountain Scenic Overlook and Trailhead

Located in Montverde, the trailhead is Lake County's link to the north shore of Lake Apopka. With the completion of the Lake Apopka Loop Trail extension, visitors can make the 18-mile trek from Green Mountain across a network of wetlands with the potential to view up to 370 species of wildlife.

Home to over 1,000 pristine lakes and rivers, it's obvious how Lake County got its name. But beyond the bountiful lakes loaded with trophy fish is a landscape found nowhere else in Florida. Rolling hills and stunning vistas comprise Lake County's unique terrain, leading to the highest point in peninsular Florida, Sugarloaf Mountain.

Known as a top tourist destination worldwide, the metro-Orlando area, which includes Lake County, is also a leading destination for film, television and commercial production. Hills, natural wetland preserves, pasturelands and waterbodies offer a diverse landscape meeting any film location need.

Although centrally located, Lake County remains nature's paradise, with nearly 500 acres of active parks and over 3,400 acres of passive parkland, much of which is protected public land. Walkers, joggers and cyclists are treated to 45 miles of hilly recreational trails, both paved and unpaved, while paddlers and kayakers traverse 180 miles of waterway trails known as Blueways.

Natural habitats full of flora and fauna attract hikers and avid bird watchers to these undisturbed lands where protected species like the Florida Scrub-jay and gopher tortoise peacefully reside.





NATIONAL TRAINING CENTER:

The NTC, part of South Lake Hospital, is a state-of-the-art sports and fitness facility is a training destination for hundreds of high school, collegiate, professional and amateur athletes from around the country and the world.

WELLNESS WAY:

The Wellness Way Urban Service Area is a master plan for almost 16,000 acres of land in South Lake County. With its unique jobs to housing requirements, the Wellness Way plan will also create over 26,000 jobs in South Lake County.

TRAILS AND GREEN MOUNTAIN SCENIC BYWAY/OVERLOOK:

Lake County is home to over 20 miles of multi-use paved recreational trails as well as 1,100 acres of county parkland and over 2,700 acres of protected public lands.

Lake and Orange County are intimately connected via trails. With the completion of the Lake Apopka Loop Trail extension, visitors can make the 18-mile trek from Green Mountain across a network of wetlands with the potential to view up to 370 species of wildlife.

WOLF BRANCH INNOVATION DISTRICT:

The completion of the Wekiva Parkway will finalize the beltway around Orlando and open up access for an employment based economic development district, known as the Wolf Branch Innovation District, which will include higher intensity office, light industrial and support retail uses.

DOWNTOWN MOUNT DORA:

Named to numerous "Best Small Town" lists, Mount Dora is a unique city dotted with tree lined streets and mom and pop shops. Known as the Festival City, it is home to many major events including the Mount Dora Arts Festival, Bicycle Festival, Craft Fair and Sailing Regatta.

DOWNTOWN TAVARES:

The Ruby Street Stormwater Improvement and Beautification Plan is designed to entice businesses, residents, and visitors into the heart of the city, attracted by retail, the arts, and festivals, and brought to the city through improved infrastructure for air, water, and rail transport.

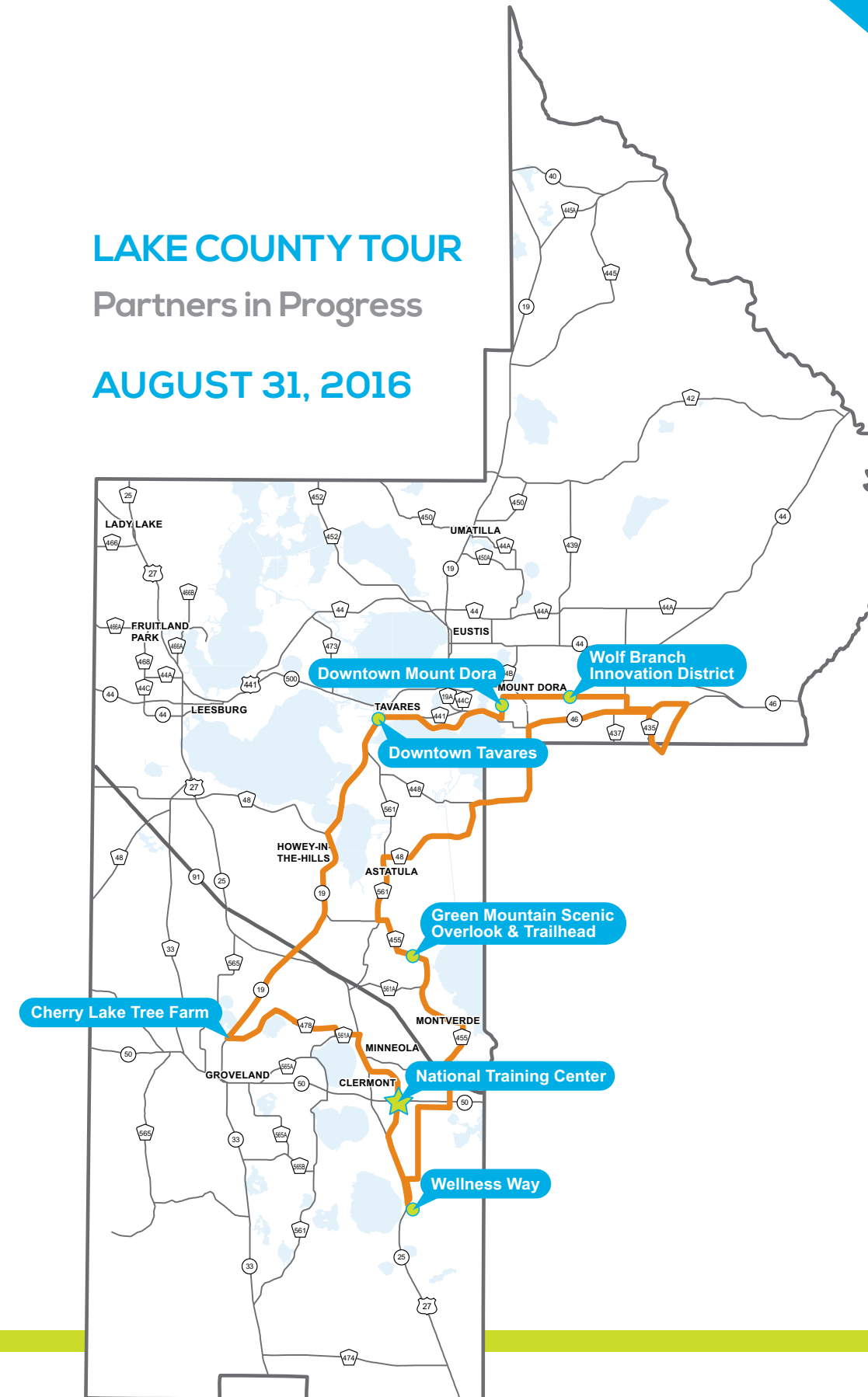
CHERRY LAKE TREE FARM

Founded in 1985, Cherry Lake Tree Farm is one of the largest wholesale producers of ornamental trees, palms and shrubs in the Southeast United States.

LAKE COUNTY TOUR

Partners in Progress

AUGUST 31, 2016



LAKE COUNTY ECONOMIC DEVELOPMENT

Vision

A prosperous local economy supported by a wide range of career opportunities, a diversified tax base, and an exceptional quality of life.

Mission

To aggressively retain, attract and grow jobs in Lake County, in partnership with others, while protecting and improving Lake County's quality of life and unique character.

CONTACT INFORMATION

Lake County Economic Development and Tourism

315 W. Main St., Suite 520, Tavares, FL 32778

352-742-3918

www.businessinlakefl.com



LAKE COUNTY, FL
Economic Development

315 W. Main St., Suite 520, Tavares, FL 32778 ■ 352-742-3918 ■ www.businessinlakefl.com