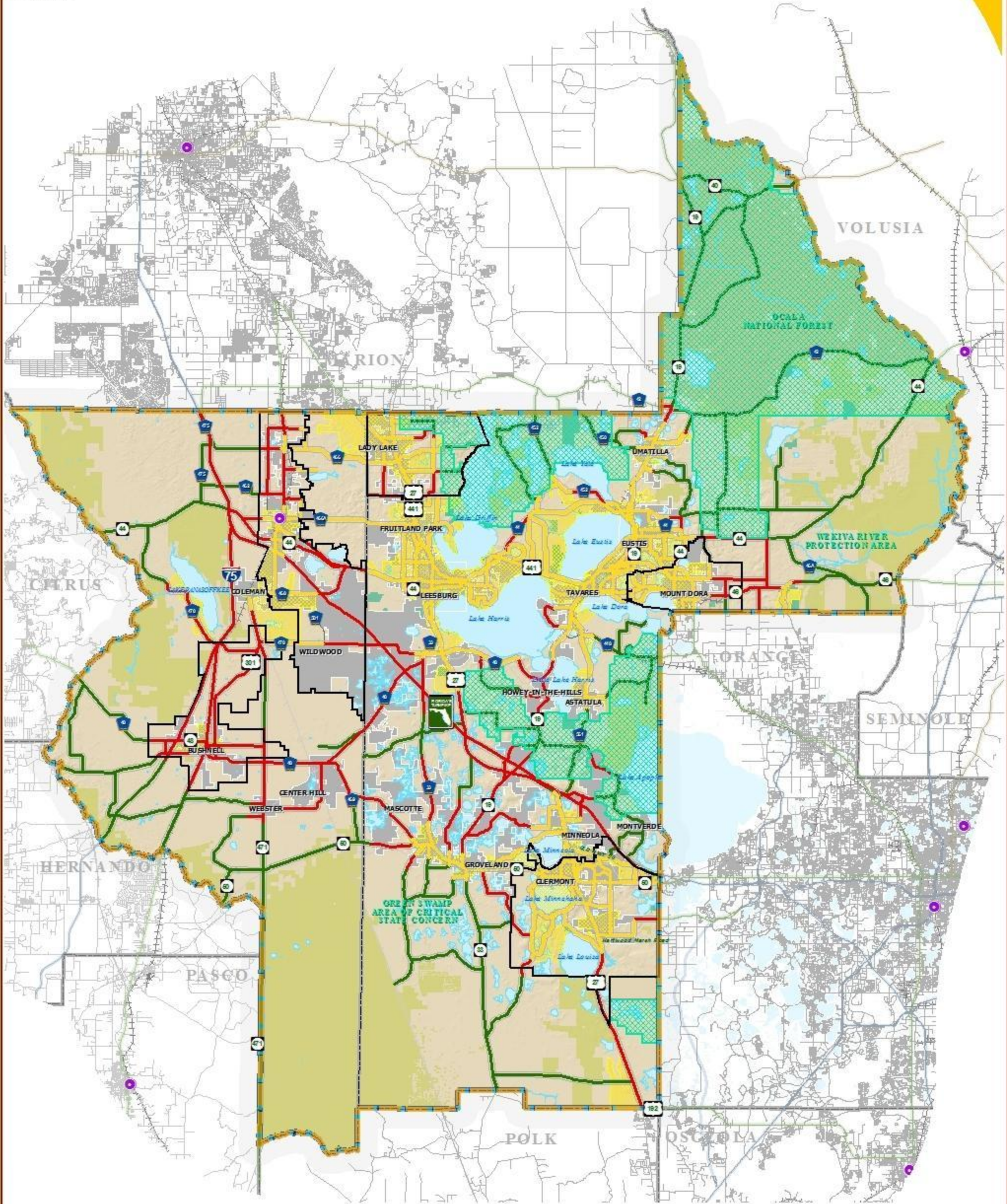


# URBAN, TRANSITIONING AND RURAL AREAS MAP



**LEGEND**

- Water Body
- Municipal Area
- County Delineation
- Lake-Sumter MPO Boundary
- Amtrak Station
- Active Railroad
- Abandoned Railroad

- Public Lands Managed by Federal Agency
- Public Lands Managed by State Agency
- Public Lands Managed by Local Agency

**THEME LEGEND:**

- LSMPO Adopted Functional Classification**
- Transitioning Segments
  - all URBAN Type Roads
  - all RURAL Type Roads

- Rural Protection Area
- Census 2000 Urbanized Areas Within LSMPO
- Adopted ISB or JPA

**NOTE:**  
Urban is more than 1,000 people per square mile;  
Rural is less than 500 people per square mile;  
Transitioning is between those thresholds,  
reasonably anticipated to urbanize within  
a 20-year planning horizon.

**NOTE:**  
The corridors displayed on this map, as adopted by the  
Lake-Sumter MPO, are so designated for planning purposes  
as for the efficient management of the transportation network.



## TRANSPORTATION PLANNING AREA SUMTER AND LAKE COUNTY, FLORIDA



**DATA SOURCES:**  
GIS data provided by the Florida Department of Transportation (FDOT) and the Florida Department of Environmental Protection (FDEP).  
Census 2000 Urbanized Areas data provided by the U.S. Census Bureau.  
Public Lands data provided by the U.S. Forest Service, Florida Department of Natural Resources, and various local agencies.  
Map prepared by the Lake-Sumter Metropolitan Planning Organization, September 14, 2009.

U:\Lake-Sumter\mop\GIS\Transportation\A\map\lake\_sumter\lake\_sumter.mxd - 4/19/2010 10:48:15:35 PM