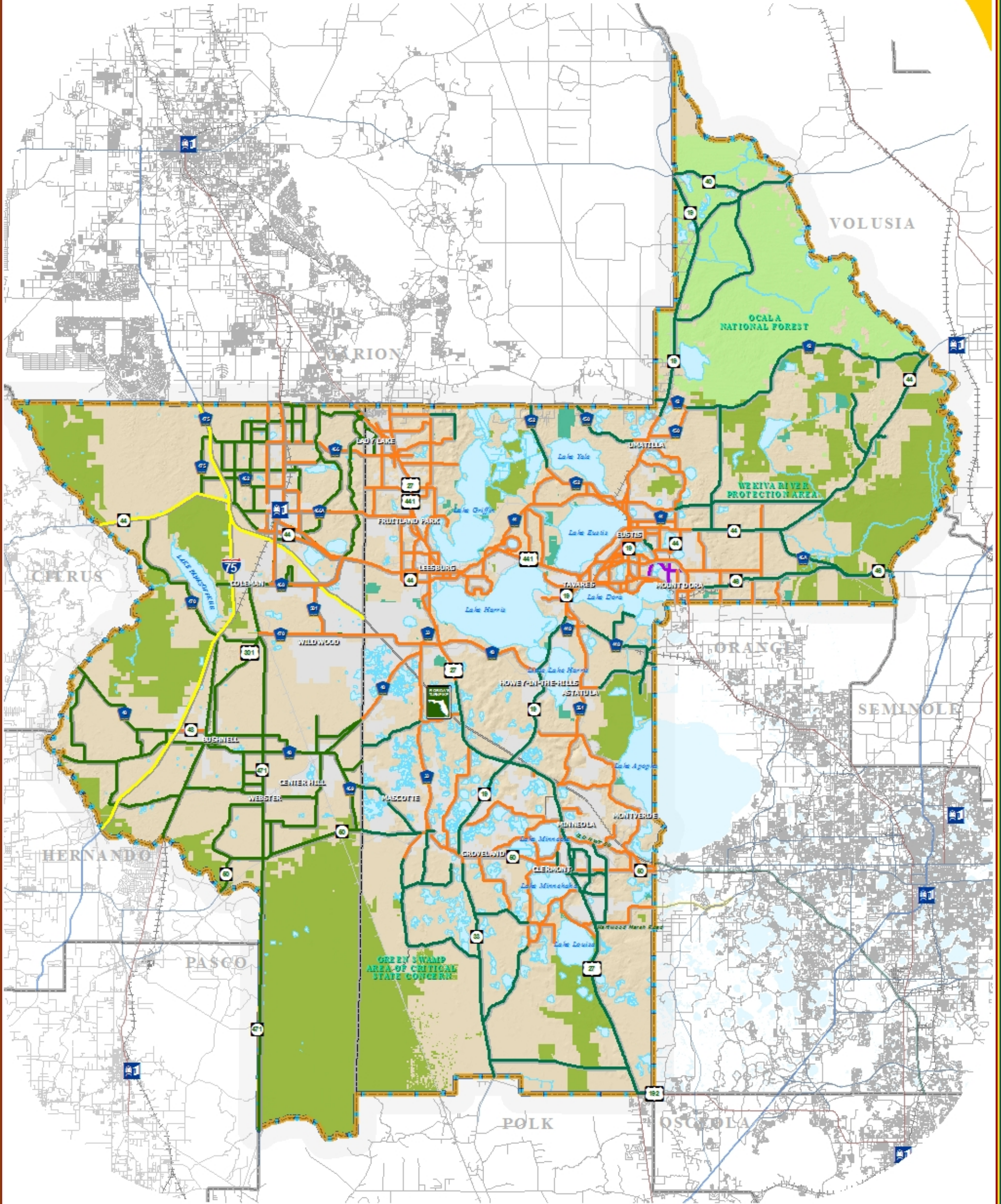


# ADOPTED STANDARD LEVEL OF SERVICE (L.O.S)



**LEGEND**

- Water Body
- Municipal Area
- County Delineation
- Lake-Sumter MPO Boundary

- Public Lands Managed by Federal Agency
- Public Lands Managed by State Agency
- Public Lands Managed by Local Agency

- County Road
- State Road
- US Highway
- Interstate
- Turnpike

- Amtrak Station
- Active Railroad
- Abandoned Railroad

**ADOPTED LEVEL OF SERVICE CLASSIFICATIONS**

- B
- C
- D
- E



## TRANSPORTATION PLANNING AREA SUMTER AND LAKE COUNTY, FLORIDA



**DATA SOURCES:**  
 GIS data provided by the Florida Department of Transportation (FDOT) and the Florida Department of Environmental Protection (FDEP).  
 The map was prepared by the Lake-Sumter Metropolitan Planning Organization (MPO) in cooperation with the Florida Department of Transportation (FDOT) and the Florida Department of Environmental Protection (FDEP).  
 The map is for informational purposes only and does not constitute a contract or warranty of any kind.  
 The map is the property of the Lake-Sumter Metropolitan Planning Organization (MPO) and is not to be reproduced without the written consent of the MPO.  
 The map is dated 04/16/2016.

Lake-Sumter MPO GIS Data Standard - LSMPPO - 11x17.mxd - 4/16/2016 10:38:36 AM