

Legend

- Seminole County Municipalities
 - Altamonte Springs
 - Lake Mary
 - Longwood
- Orange Co. Municipalities
 - Apopka
 - Eatonville
 - Maitland
 - Oakland
 - Ocoee
 - Orlando
 - Winter Garden
- Lake County Municipalities
 - Eustis
 - Mount Dora
- Wekiva Study Area
- Springs
- Wekiva River Protection Area
- Most Effective Recharge Areas
(Type "A" Hydrologic Soil Group)

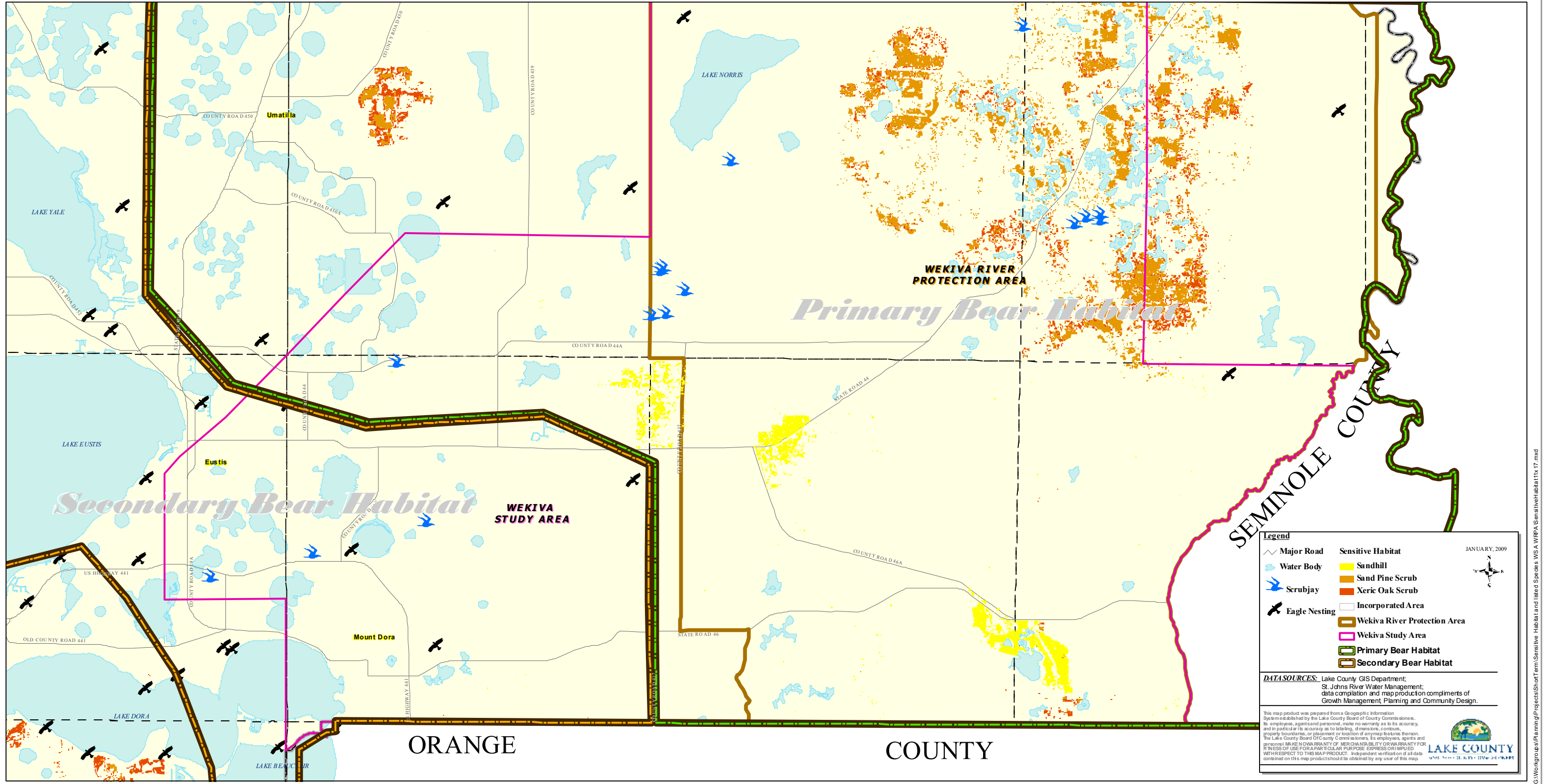


January 31, 2005

**Wekiva Study Area
Most Effective
Recharge Areas**

Prepared for
WRBCC by Fla.
Dept. Community
Affairs/Div. of
Community
Planning

WSA and WRPA SENSITIVE HABITAT and LISTED SPECIES LAKE COUNTY FLORIDA



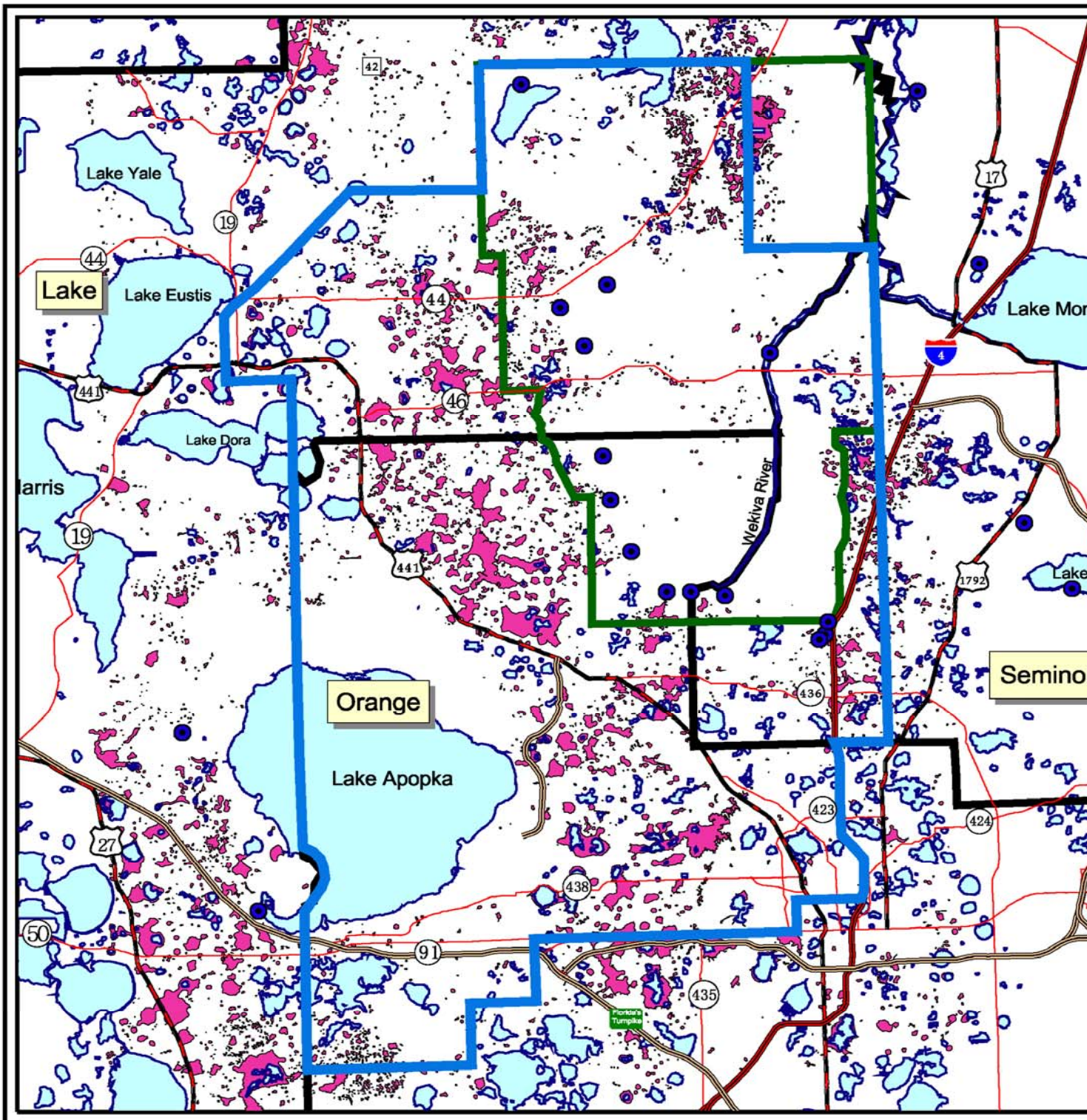
JANUARY, 2009

	Major Road		Sensitive Habitat
	Water Body		Sandhill
	Scrubjay		Sand Pine Scrub
	Eagle Nesting		Xeric Oak Scrub
	Wekiva River Protection Area		Incorporated Area
	Wekiva Study Area		Primary Bear Habitat
	Secondary Bear Habitat		Secondary Bear Habitat

DATASOURCES: Lake County GIS Department;
St. Johns River Water Management;
data compilation and map production compliments of
Growth Management Planning and Community Design.

This map product was prepared from a Geographic Information System established by the Lake County Board of County Commissioners. Its employees, agents and personnel make no warranty as to its accuracy, and in particular as to labeling, dimensions, contours, property boundaries, or placement or location of any map features thereon. The Lake County Board of County Commissioners, its employees, agents and personnel MAKE NO WARRANTY OF MERCHANTABILITY OR FITNESS FOR ANY PURPOSE. INDEPENDENT VERIFICATION OF ALL DATA CONTAINED ON THIS MAP PRODUCT SHOULD BE OBTAINED BY ANY USER OF THIS MAP.

LAKE COUNTY



Legend

-  Wekiva Study Area
-  Springs
-  Wekiva River Protection Area
-  Karst Features



1 0 1 2 3 4 Miles



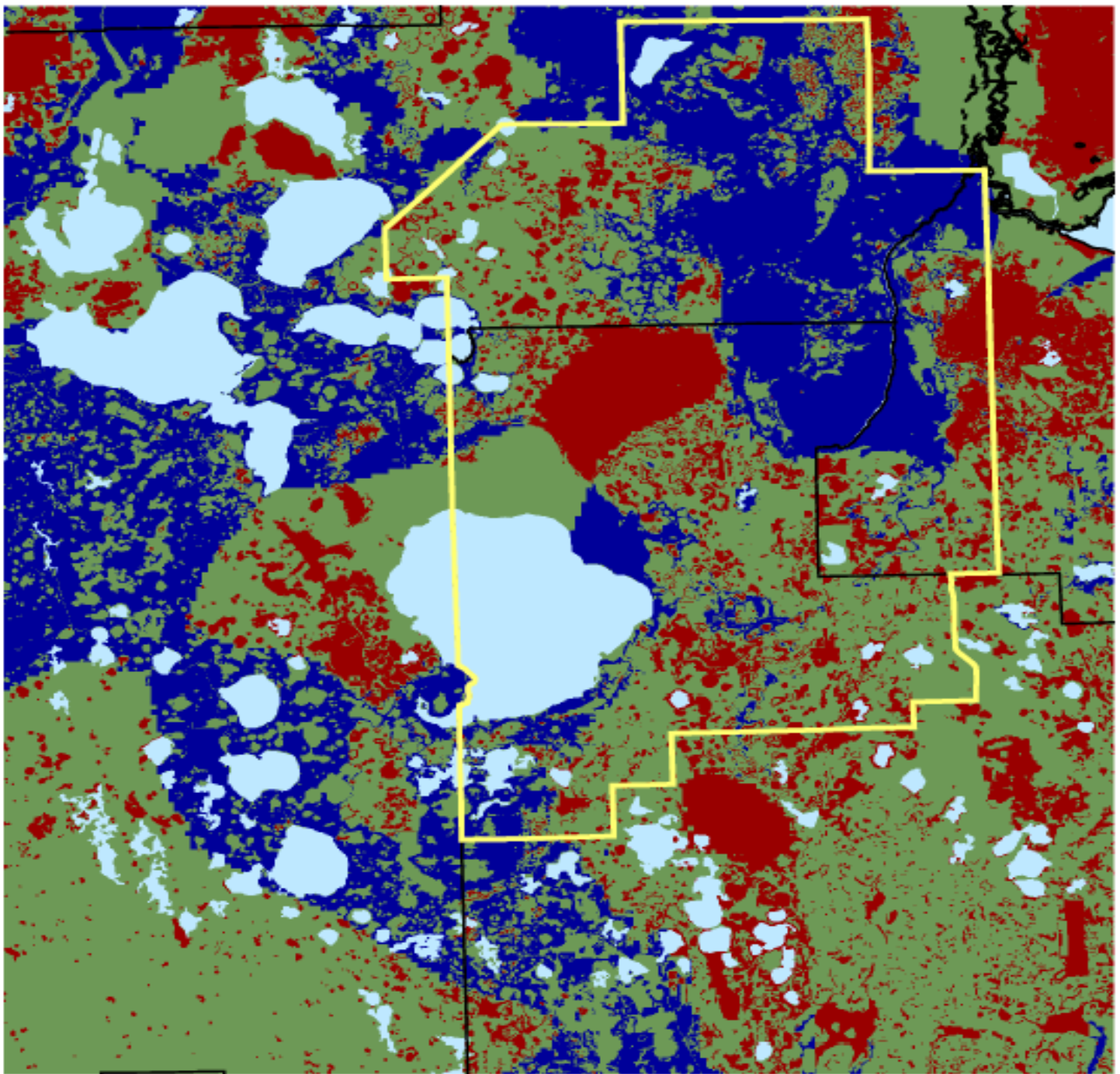
August 11, 2004

WEKIVA STUDY AREA
Karst Features



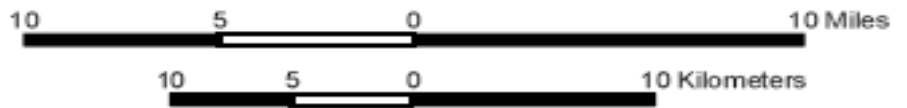
Prepared for
WRBCC by Fla.
Dept. Community
Affairs/Div. of
Community
Planning

Wekiva Study Area – Relative Aquifer Vulnerability



Relative Vulnerability

- More Vulnerable
- Vulnerable
- Less Vulnerable
- Wekiva Study Area
- Water Features



Relative Vulnerability of the Floridan Aquifer System predicted by WAVA
(Florida Geological Survey, Report of Investigation 104, p.23)

