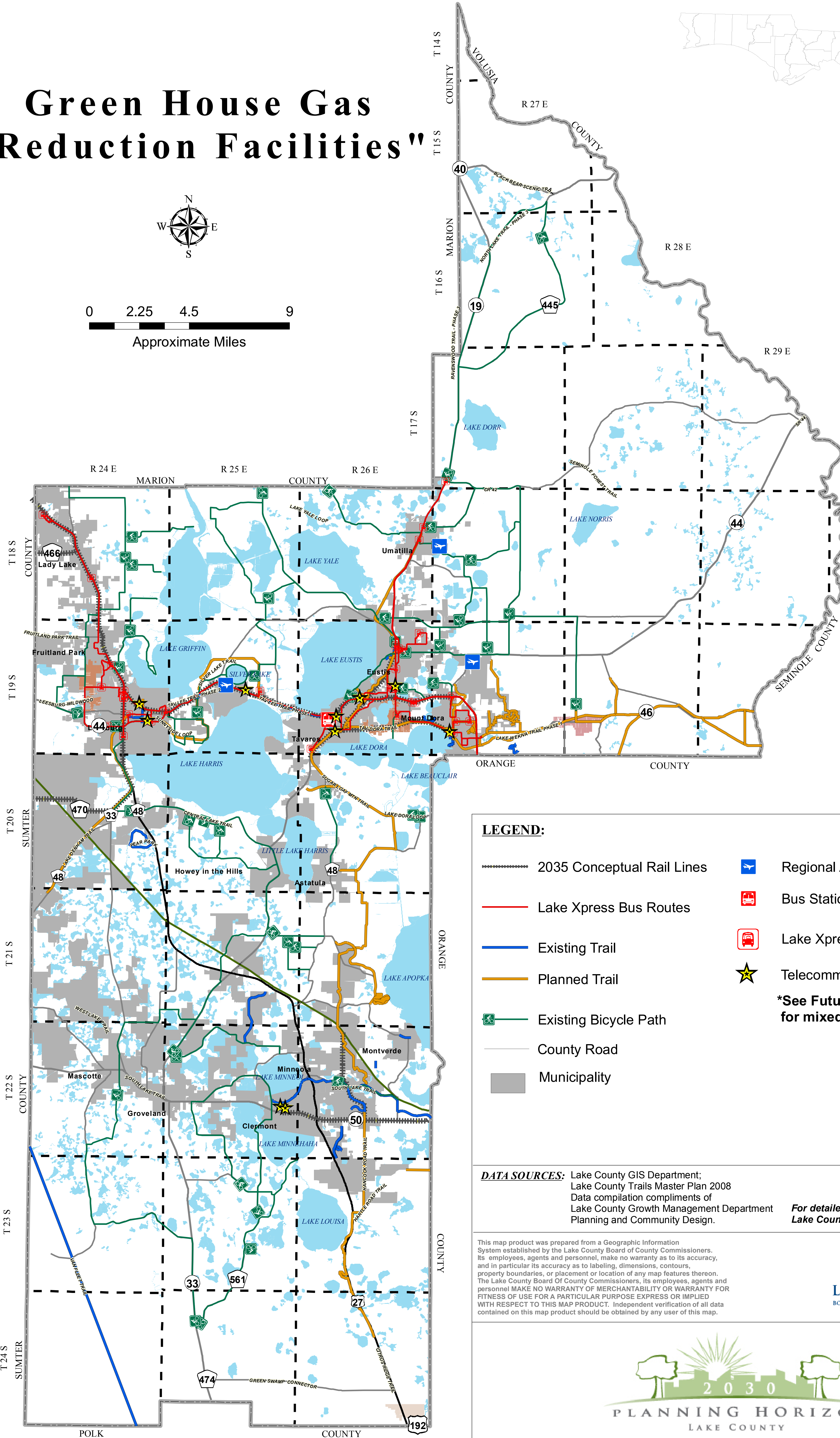
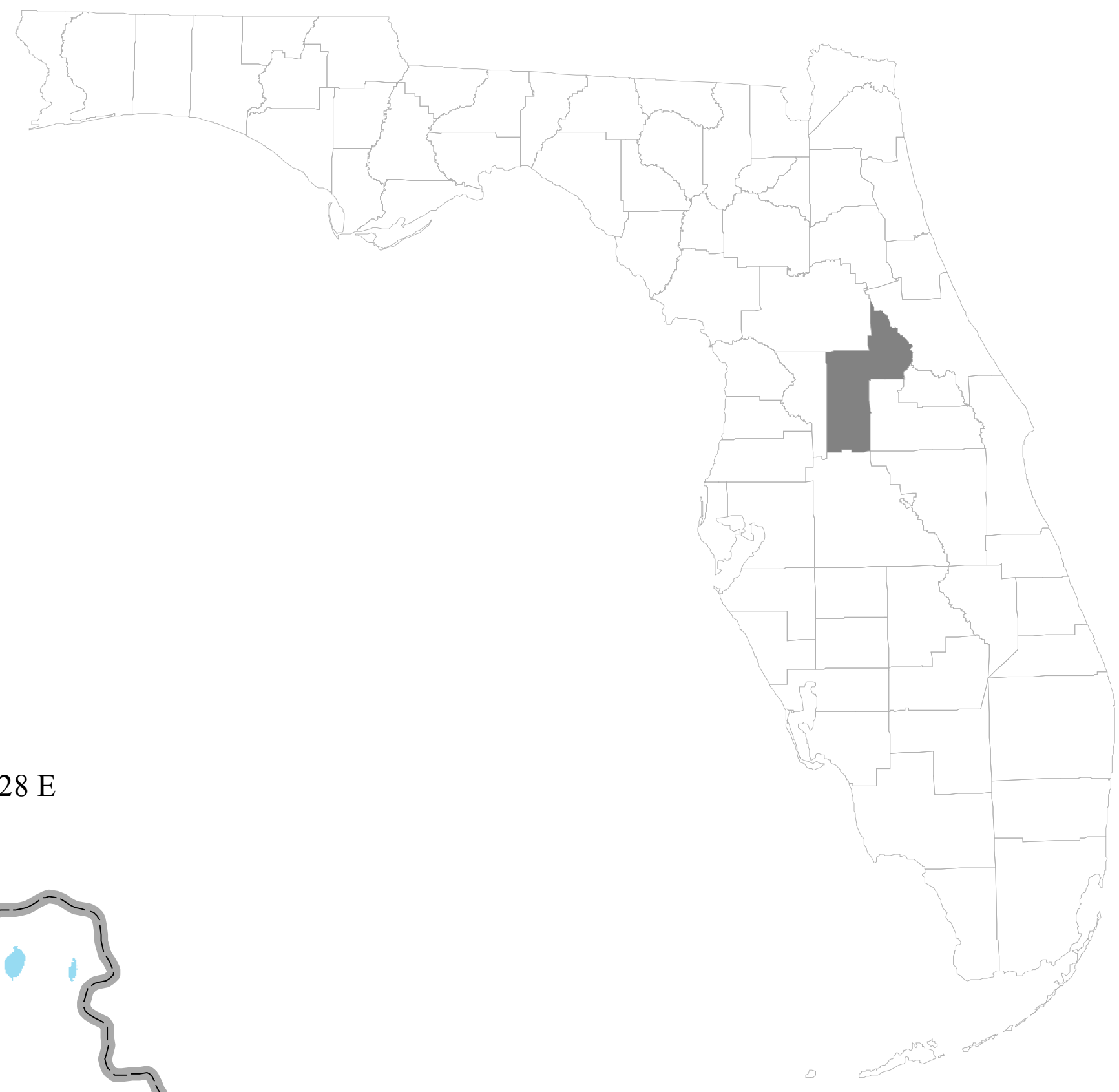
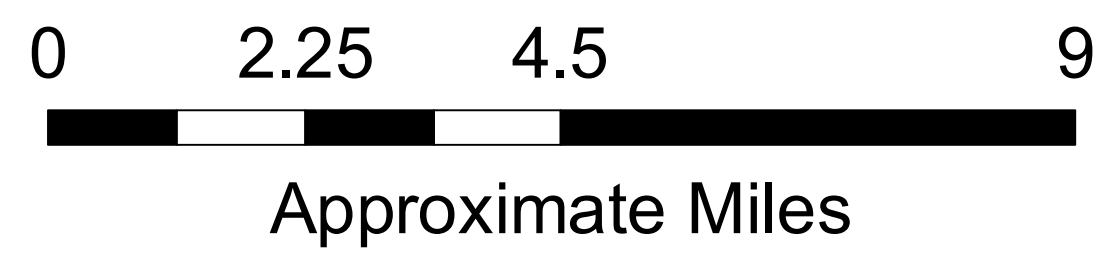
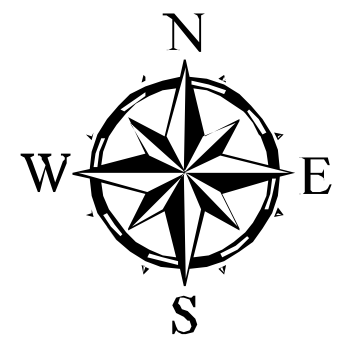


COMPREHENSIVE PLAN 2030

LAKE COUNTY FLORIDA

Green House Gas "Reduction Facilities"



LEGEND:

- 2035 Conceptual Rail Lines
- Lake Xpress Bus Routes
- Existing Trail
- Planned Trail
- Existing Bicycle Path
- County Road
- Municipality
- Regional Airport
- Bus Station
- Lake Xpress Bus Stops
- Telecommuting Business

***See Future Land Use Map for mixed use categories**

DATA SOURCES: Lake County GIS Department;
 Lake County Trails Master Plan 2008
 Data compilation compliments of
 Lake County Growth Management Department
 Planning and Community Design.

*For detailed information on Trails please see
 Lake County Trails Master Plan 2008*

This map product was prepared from a Geographic Information System established by the Lake County Board of County Commissioners. Its employees, agents and personnel, make no warranty as to its accuracy, and in particular its accuracy as to labeling, dimensions, contours, property boundaries, or placement or location of any map features thereon. The Lake County Board of County Commissioners, its employees, agents and personnel MAKE NO WARRANTY OF MERCHANTABILITY OR WARRANTY FOR FITNESS OF USE FOR A PARTICULAR PURPOSE EXPRESS OR IMPLIED WITH RESPECT TO THIS MAP PRODUCT. Independent verification of all data contained on this map product should be obtained by any user of this map.

LAKE COUNTY
 BOARD OF COUNTY COMMISSIONERS

PLANNING HORIZON
 LAKE COUNTY

G:\Workgroups\Planning\CountyMaps\Comp_Plan\FutureLandUseSeries\FLU_Series\GreenHouseGas_2030_34x44.mxd

FUTURE LAND USE SERIES